

KETTLES 'n COOKWARE®

ENDORSED BY THE GRISWOLD & CAST IRON COOKWARE ASSOC.

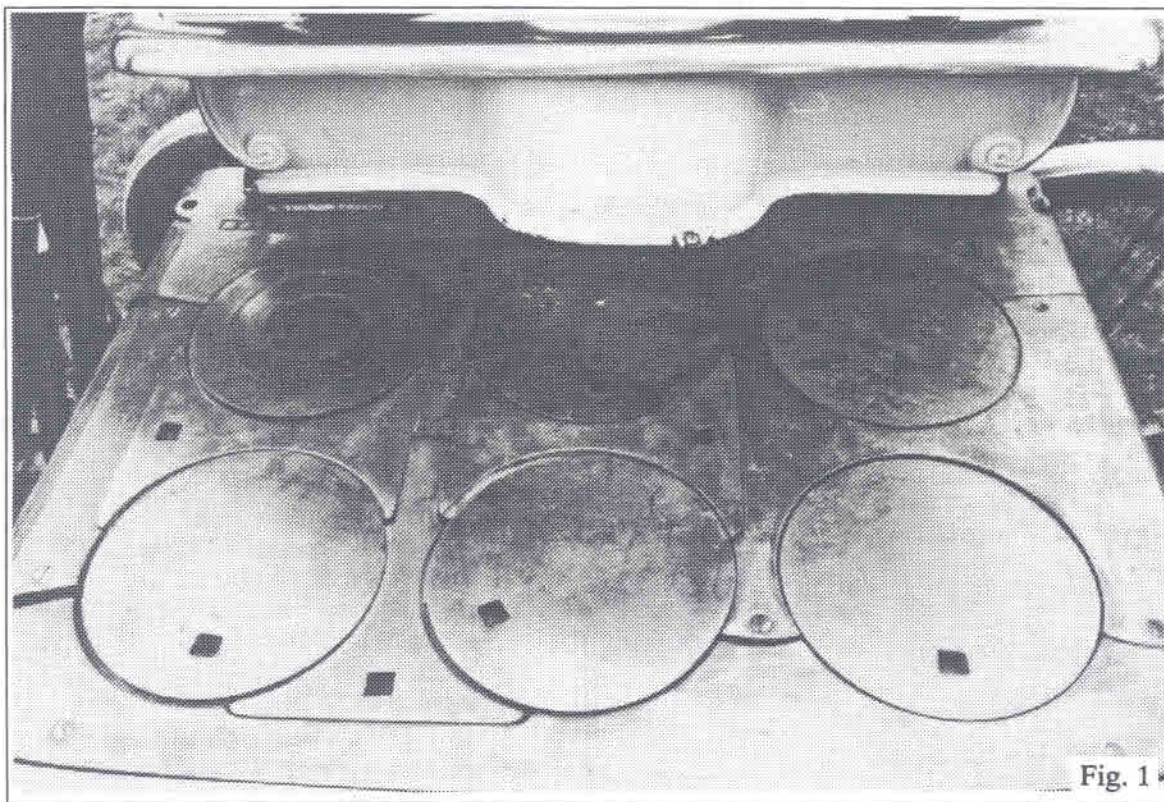


Fig. 1

STOVE TOP COOKWARE

by D.G. Smith

Cast Iron Cookware, for the most part, has several numbering systems. Skillets were generally numbered "O" through "14". Griswold of course, also made a #20. A few manufacturers, particularly Griswold and Wagner, also used pattern numbers which were more specific to the production of the piece.

One numbering system used by many manufacturers or foundries was designed to indicate pieces which fit certain stove tops, or more specifically, stove top openings.

Cooking temperatures on the smooth, flat top of wood or coal stoves was controlled by the cooking

utensils position on the stove top. When more intense and direct heat was needed, a stove "lid" could be removed. A piece such as a skillet could be placed directly over the opening. Ever wonder why the center of the bottom of a skillet is burned and pitted? Here's the culprit.

Pit bottom kettles were designed to fit into the stove top opening previously covered by the lid. Lids were different sizes, generally smaller on small stoves and larger on big stoves. A #7 kettle would fit a #7 stove, a #8 kettle a #8 stove, etc. Some stoves also had

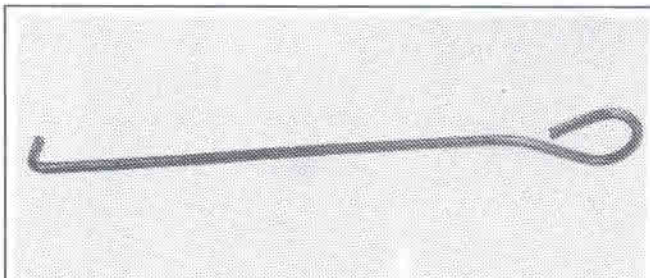
(continued on page 33)

FROM THE EDITOR—

In the northeast part of the country, the flea market season nears its end. I've made my last trip to Brimfield. I just don't enjoy the last one as much as the May experience. The "hype" just seems to be gone by September.

The two previous issues of KnC were mailed later than I would like, and later than you would like from the responses I've been receiving. I'd given thought to asking Steve Stephens to help me improve my production schedule, but after a brief thought decided to pursue other avenues (ha, ha). I talked to my printing company about delays and discovered one problem. They also print for the Buffalo Bills! My printing schedule is therefore competing with the Bills Schedule. What is there about professional football that seems to plague KnC? Oh well.

The James Spencer Phillips Saga continues. He is the individual who cashed my \$350 check then didn't ship the iron. In June, after exhausting all other alternatives, I sued him in Small Claims Court in Michigan. I drove nearly four hundred miles (each way) to appear before the District Court. The judge ordered him to pay \$100 a month until the \$350 plus court costs are paid. I received the first payment (due in June) in July, and haven't received a cent since. I'm now initiating another court action. At this point it certainly isn't the money. Sometimes we have to take a stand for principle! - Dave



What's It?

This 3/16 diameter rod is 9-1/4" long with a 5/8" hook.



Put your
Christmas Greeting
in the
December issue
of KnC.
Your design or ours
1/4 Page only
\$10.00



Recent Auction Prices

Joe Noto recently attended two auctions in North Carolina and recorded the following selling prices of Griswold.

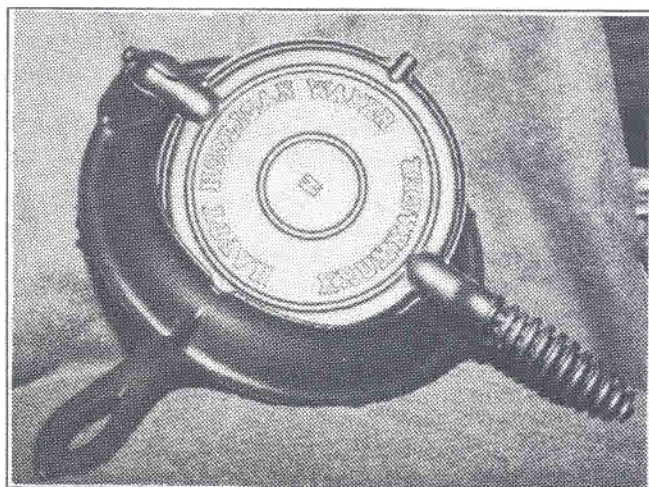
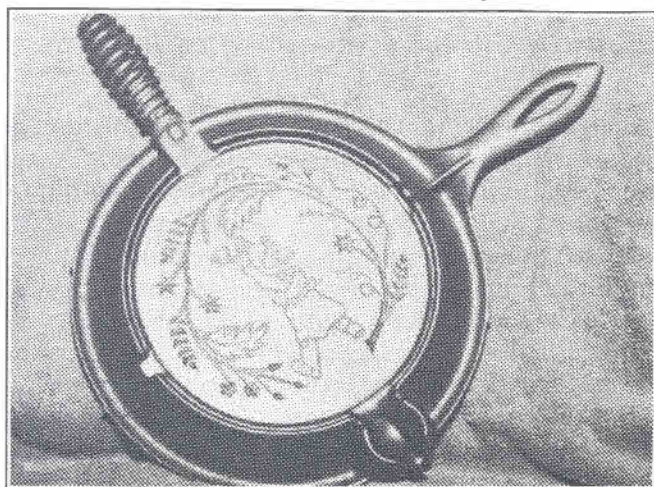
Spider Logo Skillet (burned) \$1200
#13 Slant EPU \$875
#2 EPU w/SR \$350
Santa \$475, \$575
Rabbit \$275
Lamb \$180, \$140
#20 Hotel Skillet EPU \$350
Coffee Pot Trivet \$60
Hex Trivet \$50
#4 Skillets \$110 - \$125
ERIE Toy 3 Legged Kettle \$175
Alum Toy Tea Kettle \$220
#8 Hammered Waffle \$175
Alum Toy Skillet \$170
Skillet Rack (Nickel) \$175
Puritan #8 Waffle \$65
#8 Tite Top Dutch Oven - Lgt Blue \$75
#8 Safety Kettle w/tin lid \$200
#11 ERIE Flat Top Dutch Oven \$105
#11 Skillet slant/EPU \$165
#10 Skillet, small mark \$45



*Deepest Sympathy goes to
Joel Schiff
with the passing of his mother,
Gladys Schiff*



Casting Call



HAPPY HOOLIGAN WAFER KRUMKAGER, Chicago, IL

This is one of the more unusual Wafer Irons.

Collection of Craig Leverenz.

If you have a special piece you would like to share with our subscribers, submit a photo and a few comments about the item.

The following list was compiled by Mac McClendon from talking to six collectors having the most complete muffin pan collections.

The Ten Rarest Griswold Muffin Pans

| <u>Number</u> | <u>Description</u> | <u>Pattern No.</u> | <u>Known</u> |
|---------------|----------------------------------|--------------------|--------------|
| 1. #28 | Single Loaf Pan | 961 (?) | 0 |
| 2. #11 | Early French Roll (1890 Catalog) | None | 2 |
| 3. #2800 | Wheat Stick | 633 | poss. 6 |
| 4. #26 | Double Loaf | 960 | 5 |
| 5. #1 | Single Vienna | 955 (?) | 4 |
| 6. #2 | Double Loaf Vienna | 956 | 6 |
| 7. #13 | Turks Head | 640 | 7 |
| 8. #14 | Rectangular Cup | 952 | 8 |
| 9. #4 | Vienna | 957 | 8 + |
| 10. #50 | Hearts Star | 959 | 10 + |

Also thought the rarest variations would be interesting:

| <u>Variation</u> | <u>Known</u> |
|---|--------------|
| #16 Wide Center | 1 |
| #19 Loop Handle | 1 |
| #2 Vienna Marked w/patten # | 1 |
| #4 Vienna marked w/pattern # | 1 |
| #14 Rectangular Cups marked w/pattern # 2 | |
| #24 Bread Stick w/pattern #957 | 2 |



The Melting Pot

Dave: I recently purchased a #13 skillet. One problem - it's cracked. Is there anyone who could weld or repair it? Deborah C.

Deborah: Information provided to the members of the G&CICA for reconditioning or repair, including welding (a real specialty on cast iron), lists. Curtis Nance, 6801 Corning Rd., Zionsville, PA 18902. (215) 965-4466. -ed.

Dave: After reading & rereading your editorial, I must say in large part, I agree with your conclusions. My initial reaction was that it [EDS: Griswold Cast Iron - A Price Guide] became an adult form of "show & tell" and a way for some "collectors" to increase the value of their collections. Personally, I welcome the book as a visual aid enabling me to see pieces that I will probably never see in person. It was also fun to be included in the group of "elite" contributors to the book which has directly been responsible for several new contacts with collectors.

At the risk of sounding defensive, I must take exception with your paragraph re: validation of certain Griswold pieces. As the proud possessor of a Rabbit Spreader Outline Mold, I must dispute your reasoning that it is not Griswold! 1) The dealer that it was purchased from (not by me) told the buyer that at one time he had 6 of them in his possession. All came as a pair with only the front half of the Griswold Rabbit Mold & were bought in the 1940s. 2) The quality of the casting is second to none. (Certainly better than any Wapak casting I've ever seen! 3) The Deep Fat Fryer has a p/n of 1003 - exact same type style and size as the 1005 on the tab handle of the Outline Mold. The Rabbit Mold was made in the 1940s as was the Deep Fat Fryer. 4) The tab handles on the Outline Mold have the characteristic ridge around the perimeter of each handle, the same as those that appear on some muffin pans, skillet handle griddles and large skillets. 5) It just is -so there!

Your dependence on research done by a man who has not been active in the hobby for two years & who freely advertises a newsletter in the back of the book and takes people's money in return for a product that does not exist, leaves me chilly (No, - cold). If he were so knowledgeable & thorough, why does his list not

show the p/n 1003 and Deep Fat Fryer. Your friend also represents all Alfred Andresen Waffle Irons, Wafer Irons & Monk Pans as being made by Griswold - a statement that I feel strongly is dead wrong. If the Alfred Andresen/Western Importing heartshaped waffle irons were cast by Griswold, I'll eat one on the 50 yard line of a Viking home game at the Metrodome on national TV - no seasoning! (Arghh, there's that professional football again -ed) After having seen at least 75 or 100 of them in the last couple of years, the quality of the casting doesn't come close to Griswold quality. Yes, it has the patented Griswold hinge mechanism; Yes, it comes on a Gris. base; Yes, it usually has Gris. wood handles - No, it was not cast by Griswold!! No Way!

I think you have lost sight of the fact that Mr. Wood (publisher) never claimed to be a Gris. collector and probably never wants to be. What he does claim to be, however, is a book publisher! I infer from that that he is also a businessman. He became aware of a niche market that was not being adequately addressed and used his resources & his talents to fill the need as quickly as possible. Fueled by the knowledge that another book was also in the works in another part of the country, he probably proceeded faster than he should have to be first in the market. The fact that he sold over 500 books in the first week alone would speak for itself. Clearly, to the "inside minority", any reference book will never be good enough. My suspicion is that he will learn from his mistakes and publish better & better books as time goes by. Most dealers, whom I have talked to about the book see it as mainly a "picture book" and usually ask me, "OK, now what's it really worth?"

Keep up the great job. -Craig

Craig: Thanks for your response. I put very little reliability in second & third hand information. Someone said that so and so had such, to me lacks credibility. Some people will tell anything to sell an item. A person once told me that they knew someone who saw a GF Filley #9 Gem Pan. My answer - Show me! There is nothing (in print) that I know of that indicates there was one. In my opinion an authoritative book about Griswold would not include questionable and unverified pieces such as the Rabbit Outline Mold.

(continued on next page)

Re: Steve Stephens research - the omission of a pattern number for the Deep Fat Fryer certainly does not diminish his extensive research on pattern numbers. The chart speaks for itself!

Your having seen 75 to 100 Albert Andresen Heart Shaped Waffle Irons in the past two years seems incredible. I don't believe I have seen that many in the past twenty years. Griswold must have shipped a large number to your area !

We agree on one thing: Neil Wood published Griswold Cast Iron - A Price Guide strictly as a business venture - a very successful one at that. -ed.

Mr. Smith: I recently bought a cast iron popover pan at auction, and have been unable to find any reference to it. Perhaps you will be able to identify it for me from the following description: It has six compartments, each pair connected by a short bar in the middle. There is a long bar/handle at each end. There is printing in relief on each of these long bars: (top) 1??? JOHN WRIGHT CAST IN USA; (bottom) LION & LAMB POPOVER PAN. Each of the six compartments is shaped as the head of a lion or lamb. The date on the top bar appears to be 1984. Can this be correct? I will be grateful for any information, and an estimated dollar value. Many thanks for your assistance. -Nancy W.

Nancy: The gem pan you have is from the John Wright Foundry, Wrightsville, PA. The date of 1984 is correct. The John Wright Foundry is an old foundry and is still producing pieces today. It is one of the very few, making reproductions, and original patterns that dates and marks their pieces. Their pieces are usually marked either "John Wright" or "JW". This piece sold for about \$25 in gift shops - I suppose the value remains about the same. -ed.

Mr. Smith: I am curious if there is any rarity or real value of speckled porcelain pieces. I've seen it both in small & large block logs, some marked EPU, and some not. Common color combinations seem to be red & black and Green & white speckling. Also who did this enameling process? I heard Eruite Mfg. Co., Erie PA, true or false? -Dave L.

Dave: For the most part, enameled pieces are not as desirable as black iron therefore values are generally equal to or less than black iron. I have heard that Griswold did some enameling, but also contracted some. Maybe some of our readers can offer more specific information. -ed.

Griswold & Cast Iron Cookware Association

Hi Griswold & CICA Members -

Have you seen any "good" reproductions/fakes lately? I really dislike having to ask that question. However, the proliferation of fraud and deceit continues in the form of Griswold reproduction and fake pieces. In lieu of Congress amending the Hobby Protection Act, enacted in 1973, we as a collectors group must continue to assist each other and the American Antique Association in educating our club members in identifying reproductions and fakes.

Dave Smith and I intend to have slides of various Griswold reproductions & fakes at our convention in Florida (February, 1994). But, we need your help! We would appreciate you sending any repros/fakes to us or those of you with a 35 mm camera capable of close-up photography can send slides. If you elect to take slide pictures and you have a good piece and a reproduction, identify the reproductions and take a slide with the items side by side. If possible, notate the difference of the reproduction. — I mentioned the American Antique Association — they would like a copy of the slides.

The summer antique season is rapidly coming to a close, I hope you had a successful "hunting" season. Now, let's all plan on attending our 3rd Annual Convention in Florida in 1994.

Happy hunting - Larry

We have everything Disney, Epcot, Sea World,

Renninger's Extravaganza and now

Florida will be
hosting the

3rd Annual

**Griswold and Cast
Iron Cookware Assoc.**

**Convention to be held
Feb. 19 & 20, 1994.**

Meeting, Work Shop,
Swap Meet & Banquet.

Registration will begin in
November. There's so much
to do, plan to stay...

Make it a family
Holiday!

More Info
to
follow



The Swap Shop

GRISWOLD FOR SALE: #10 Chuck Wagon Dutch Oven \$85; Rabbit Cake Mold w/original shipping box, shipped to National Family Store, 25 Saddle River, Garfield NJ \$270; **WAGNER FOR SALE:** Sq. Waffle Iron, Double Pans \$135; #9 Oval Roaster w/trivet \$270; Toy Dutch Oven "Hot Pot" \$95; "O" size skillet \$45; **OTHER:** Cast Iron Spittoon \$40; Favorite Piqua Toy or "O" Skillet \$60. **WANTED:** Base for #7 Griswold Waffle Iron, second hinge type; Early wafer Iron Base 1880. Pstg depends on item. Robert Karle, 344 Rt. 147, Middlefield CT 06455. (203) 349-1212

GRISWOLD FOR SALE: Orange Porcelain "O" Skillet w/SR, PN 562, and Casserole Dish w/lid, PN 67 \$110 for both. Ric Smith, 1017 Mitscher Dr, Key West FL 33040. (305) 296-7424.

WANTED: Griswold #11 Camp Dutch Oven Lid w/ slant Logo; Scotch Bowls #4&5 w/lg block emb.; #9 Golf Ball Pan 10 cup, #6 Muffin Pan p/n 944. **FOR SALE OR TRADE:** Griswold #9 Golfball Pan - only mark 947; Griswolds Erie #3 & 5 Scotch Bowls; G.F. Filley #5, 10, & 12; **WAGNER** 1920s Muffin Pans Style "C" 11 cup Turk Head Pan, Style "R" 8 cup Popover Pan, 12 cup Little Gem Pan. Darvin King, Rt 2 Box 5, Baird, TX 79504 (915) 854-1046.

WANTED: Griswold Black Iron Wood Handle Skillets - sizes 2, 3, 4, 5, 6 & 11 (any markings). Other sizes w/markings different from those we already have may also be of interest. We are currently researching wood handle skillets and would like to know what pieces, by size and markings, are out there. If you want to help, please respond, providing a photo, xerox, or rubbing if possible, to Pat & Grant Windsor, P.O. Box 3613, Richmond, VA 23235-7613. (804) 320-0386.

GRISWOLD FOR SALE: #27 Whole Wheat \$225; #1 Muffin Pan p/n 940; #3 Muffin Pan p/n 942; #283 Lg Cornstick \$135; #7 Oval Roaster \$450; Hot Service Plates \$150 each; 5 Diff. Tobacco Cutters \$150 each; Lamb \$125; Double Broiler \$225; Heat Regulator \$225; #22 ERIE \$95; #24 p/n 957 and #14 Muffin Pan p/n 952 - Best offer. Call for other items. **WANTED:** #5 Oval Roaster. Bill Roberts, 248 Winter Haven Ln, Brownsville, TX 78521. (210) 831-7134

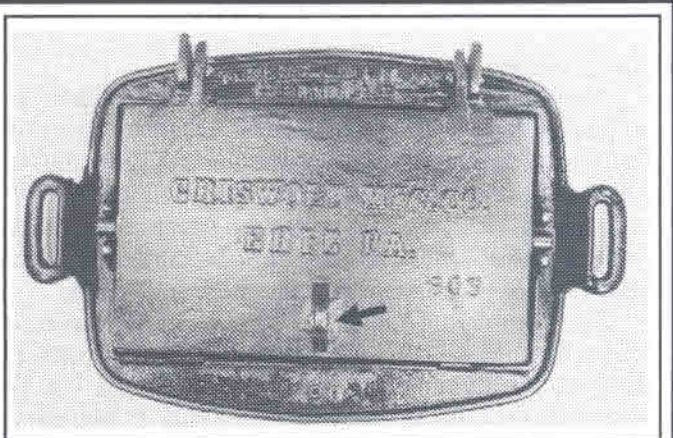
YOUR CLASSIFIED HERE - \$2.00

100 word limit including numbers

WANTED (BUY OR TRADE): Wagner cast iron & aluminum pieces. Particularly interested in early skillet with block letters and heat ring, #5, #11 and larger; later skillets w/script logo, heat ring or smooth bottom, #11 and larger; skillet lids #5, 7, 10, 11, 12, 14; wood handled skillets; shallow skillets #7, 8, 10; National skillet lids #7, 9; sq chicken fryer #1400; fish fry pan #1510; broiler and cover #1350; "Flame Tamer" hot plate #1309. Travis Solomon, 1712 La Frenz Rd., Liberty, MO 64068. (816) 792-2205

SIDNEY HOLLOW WARE WANTED: Any cast iron pieces with "SIDNEY" (script or block letters), "SIDNEY0", **SIDNEY HOLLOW WARE CO** marks. Also interested in any literature, catalogs, or other information about this company. Travis Solomon, 1712 La Frenz Rd, Liberty, MO 64068. (816) 792-2205

NEXT DEADLINE FOR ADS: NOV. 15TH



What's It: answer

The iron rod was supplied with the rectangular Griswold Waffle Iron to open it.

progressively larger rings around a lid (fig 2). By removing the lid plus one or more rings, larger pieces could be accommodated. For example, by removing a #6 lid and a ring, a #7 cookware piece could be used, two rings a #8, etc. The number kettle therefore, would fit that specific opening.

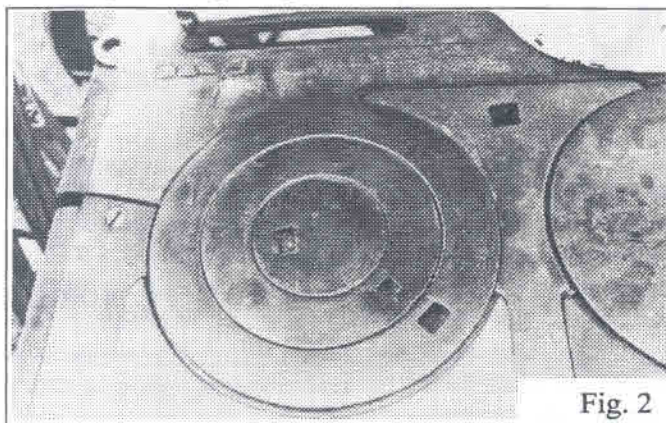


Fig. 2

To further accommodate the cookstove top, pit bottoms on kettles were often off-set. These were called eccentric kettles (fig 3). With eccentric bottoms, two kettles could be accommodated by adjoining openings. Without the eccentric off-set, there wouldn't be room for both kettles side by side.

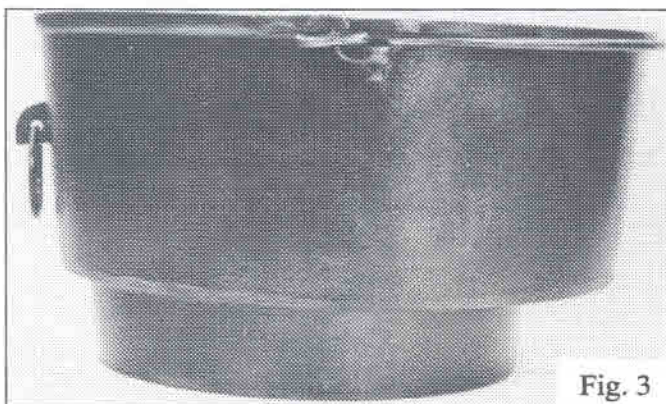


Fig. 3

The rimmed kettle offered the best of two worlds (fig.4). The rim would keep the kettle stable in the lid opening while at the same time provided a smooth, even interior, absent of the well of the pit bottom. Also, because of the rim, a smaller size kettle would fit a larger size lid opening.



Fig. 4

I suppose the regular kettles were similarly numbered to provide continuity.

Waffle Irons had the same numbering system: 6 through 9. The tabs on the bottom of the waffle iron base (fig 5) protrude slightly beyond the ring and fit into the opening when the lid was removed. These tabs kept the base from skidding across the smooth top of the stove.

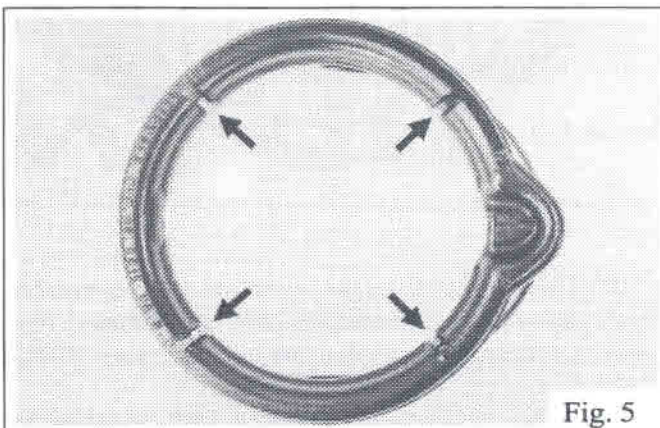


Fig. 5

Long Pans and Long Broilers (fig. 6) also had the same numbering sequence. To accommodate these pieces, both lids and the "I" cover between the lids (fig 1) were removed creating one large opening to the fire box. The long pan or broiler would then fit into the opening.

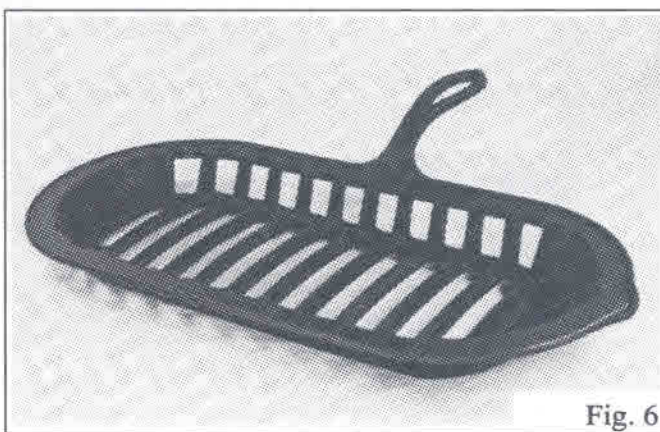
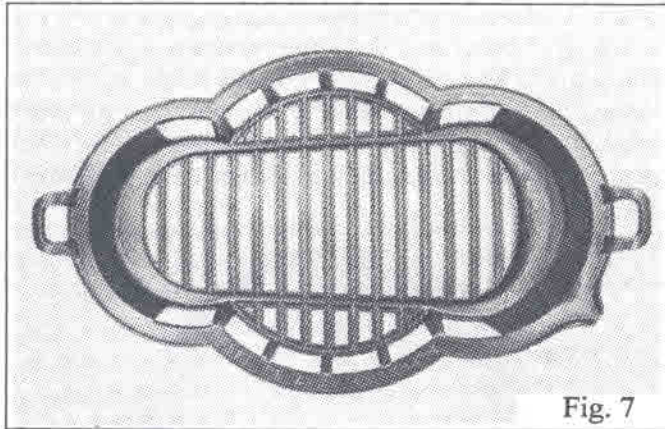


Fig. 6

Erie No. 7 Long Broiler

Most stove manufacturers made Hollow Ware as accessories for their stoves. Consequently some pieces were designed specifically for a certain stove or line of stoves. The Broiler in fig 7 fits (some) stoves manufactured by the Rathbone, Sard & Co. of Albany, NY.

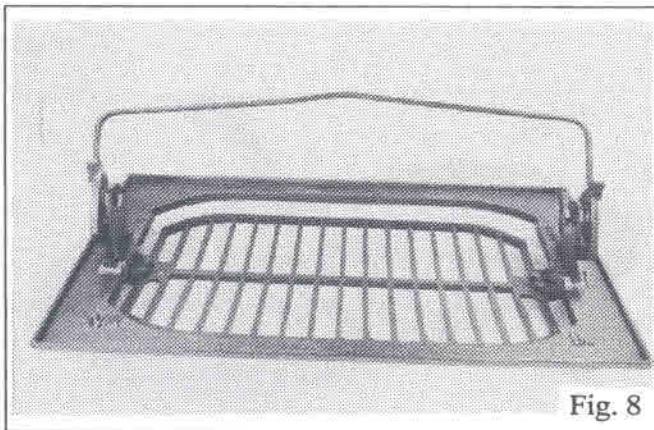
(continued on page 34)



The "I" plates on the stove top were curved on both ends rather than straight as in most makes. The curves accommodated the bow in the center of this broiler.

The broiler in fig 8 is interesting. By adjusting the bail handle, the broiler or grid iron could be lowered into the fire box for more intense heat.

The next time you see an unusual piece of cast iron cookware, don't ask only what it is also, think what does it fit?



Ten Rarest Griswold Skillets by Mac McClendon

- 1) #2 Wood Handle
- 2) #11 Wood Handle
- 3) #3 Wood Handle
- 4) #0 Diamond Logo
- 5) #1
- 6) #14 Bail w/Bail Handle
- 7) #13 Slant "ERIE"
- 8) #14 E.P.U. Slant
- 9) #5 Victor
- 10) Spider Logo



Heavy Metal News

It's finally happening! Cast Iron Charlie and The Pan Man have joined to publish a reference book and price guide on cast iron cookware. The book, which will be predominately Griswold, will also contain significant sections about Wagner, and several other manufacturers of cast iron cookware. This, without question, will be the most authoritative reference on cast iron cookware of the decade.

Kettles 'n Cookware Advertising

| | |
|----------------------------------|--------------|
| Your Business Card or two inch | |
| Display Ad, camera ready | \$5.00 |
| Larger Ads | \$5.00 |
| plus \$2.50 per inch or fraction | |
| thereof over 2 inches. | |
| Ads with photo | \$6.00 extra |



Kettles 'n Cookware is published bimonthly on even numbered months, six issues per volume.

COPYRIGHT 1993 - All Rights Reserved.

No part of this work may be reproduced without written permission from the publisher.

Subscription:

\$15.00 per volume, including all prior issues of the volume, regardless of when you subscribe.

Checks payable to:
Kettles 'n Cookware

Mail all correspondence to:
David G. Smith, Publisher
Drawer B
Perrysburg, NY 14129