

KETTLES 'n COOKWARE®

ENDORSED BY THE GRISWOLD & CAST IRON COOKWARE ASSOCIATION

COVERS & LIDS • LIDS & COVERS

O
V
E
R
S
&
L
I
D
S

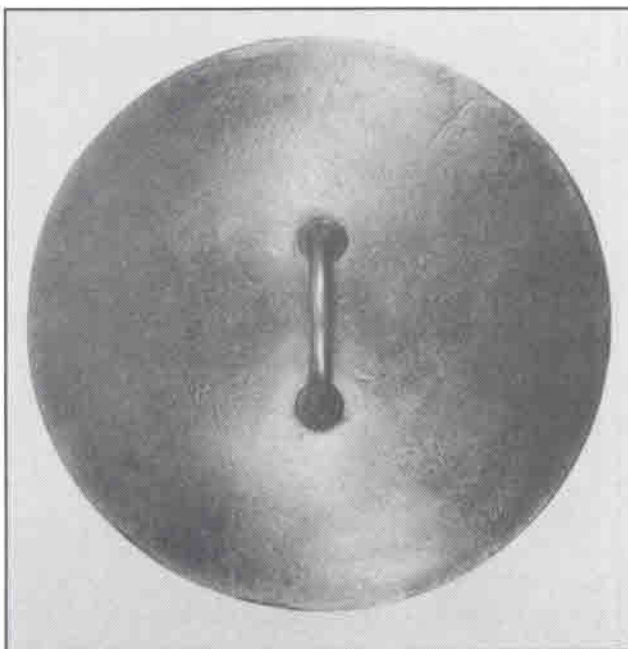


Figure 1



Figure 2

GRISWOLD: (F-1, F-2) This is the Erie Dutch oven cover.

It is very flat with an applied handle which flares out where it joins the top surface.

This is also identifiable by the pattern number.

By David G. Smith

Covers or Lids, which ever you prefer to call them, are frequently unmarked. This leads to confusion as to who the maker may be. This article is in response to the many questions I have received about the identification of covers. For the most part, this article does not include marked pieces; they speak for themselves, and many are illustrated in *The Book*.

This article also does not address variations except where they illustrate a different identifying factor. And, of course, this article is not all inclusive... there are numerous unmarked pieces which I have been unable to identify. The most common makers, however, are illustrated here.

(Continued on Page 63)

From The Editor

It just doesn't seem possible that another year has gone by. I am happy to say, I have accomplished most of my goals for this year with one glaring exception-I haven't completed the *KnC* index! I haven't forgotten. In my busy schedule I am constantly shifting priorities to meet time commitments. Whether it is getting ready for a show, a G&CICA mailing, researching and publishing *KnC* or more domestic events like maintaining our lawn, house or whatever. Of course mixed in, is preparing the next *The Book*. I am developing a *KnC* index-it is just not completed.

My new web page is finally up and running on the internet. Check it out at www.panman.com. I still have considerable work to do on it. My intent is to be able to post the *KnC* Swap Shop ads, giving *KnC* advertisers much more exposure. I have to work out the logistics.

In planning the *KnC* content for next year I would appreciate ideas and suggestions from you. I also encourage any of you to do an article. I will work with you if you wish, with editing and assistance. Come on folks, now is your chance!

I have had significant feed-back on the Dutch Oven Cookoffs article. I am glad you enjoyed it. In the article I referred to the book *Dutch Ovens Chronicled* by John Ragsdale (a *KnC* subscriber). This is an excellent book on the history of Dutch ovens, their shape and size development, and their use. If you are interested in obtaining a copy contact: John G. Ragsdale, 122 Neel, Eldorado, AR 71730.

On another note - While preparing the previous issue of *KnC*, my computer crashed! You know, the most dreaded occurrence feared by any computer owner. As far as that issue of *KnC*, I lost everything and had to completely rewrite that issue on my lap top computer. Anyway, I had previously read that the question is: Not if the hard drive will crash, but when it will crash. Take it from me, back up everything frequently. I had most of my data backed up as a result of reading that article. One thing fell through the cracks, however-I had to reenter two hundred G&CICA members into my data base. Also, I did win the election for Town Judge. Happy Holidays!!!

- the Honorable David G. Smith



*We know
Santa has lots of great
cast iron in his pack for all
of you! Our Best Wishes for a
wonderful holiday season,*

Dave & Catherine Smith



**GRISWOLD &
CAST IRON
COOKWARE
ASSOCIATION**

G&CICA - West Coast Chapter Meeting

The date was Saturday 6, 1997. The time was 10:00 a.m. The place was the home of Chuck and Rita Wafford in Springfield, Oregon, 100 miles south of Portland.

Fifty-five people attended, many who came from afar. Bob and Doris Mosier from Pennsylvania; David and Catherine Smith from New York; John Wright from Prescott, Arizona and members and guests from Washington, Oregon, Idaho and California. But the person traveling the farthest was Ercole Stranda from Italy, a guest of John Toomb.

Coffee, juice and rolls were served upon arrival, giving everyone a chance to get acquainted and renew friendships. At 11:00 a.m., Chuck Wafford displayed, discussed and identified the items brought for "show and tell." These included Griswold, Wagner, Favorite and items that were made by some of the stove manufacturers in the 19th century. At noon, we had the G&CICA news and updates and West Coast Chapter business meeting. Dave Smith and Chuck Wafford discussed the proposed Club Convention Auction. Bob and Doris Mosier announced that future conventions will be in Rochester or Syracuse, New York in 1999 and in Portland, Oregon in 2000. The group discussed the 2000 Portland convention. Committees will be organized soon.

Following the business meeting and discussions, a potluck lunch was enjoyed by all. At 2:00 p.m. the swap meet got underway. A large variety of nice pieces were for sale, and snapped up by willing buyers. This activity has been handled in a very positive manner for both sellers and buyers. After a long and busy day, friends said goodbye and travelers started home.

Sunday morning, at daybreak, many of the group attended an antique street fair in the nearby community of Coburg. One hundred seventy-five dealers displayed a variety of items for sale. Several nice pieces of cast iron were acquired by chapter members. I paid \$10 for an Iron Mountain Chicken Pan with cover which has been spoken for by my wife. As you can see, a good time was had by all.

Don't forget! Put the last week in April on your calendar for the year 2000. Plan on making this a West Coast vacation and antique excursion. Oregon and Washington's mountains, beaches and parks are spectacular, and our antique malls and shops are numerous. Oregon's largest shopping mall is just across the street from the hotel.

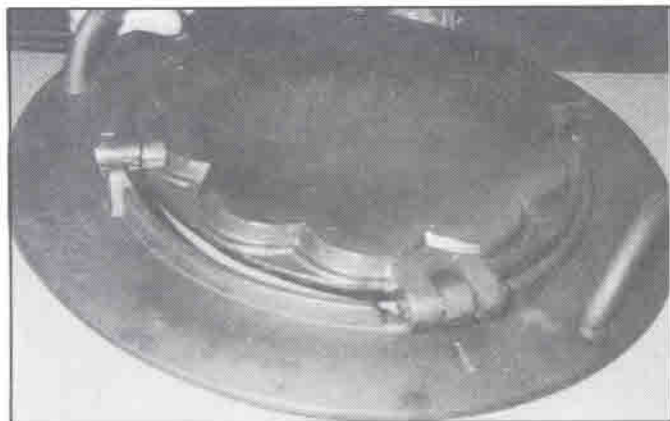
- Dean Fitzwater, West Coast Chapter

NOTICE: Membership renewals are in the mail. Your renewal must be returned by **January 15th** for you to be listed in the 1998 G&CICA handbook!



The Melting Pot

Dear Dave: I have enclosed some... photos of a waffle iron that a friend retrieved recently from the basement of his mother's house in southern Germany. I was hoping you might be able to identify it. The only marks are an interwoven P and G, and a large number 1 on the iron and on the ring. As you might imagine from the shape, it produces heart shaped waffles. It appears to be about the size of an American No.8 and fits in the largest orifice on the stove top. My friend explains that his mother used to flop the iron with a wooden spoon on the stove. When it flips, the substantial hinge rests in a recess on the other side of the ring in the same way some oval irons of American manufacture function. However, he remembers no specific tool to flip the iron. His mother must have been quick with the spoon, as she managed to feed a family of nine dinner with this iron. Curiously, the wood stove it was used on is still in daily service due to excellent local firewood supply. The iron was retired to the basement years ago. Any ideas? – RW



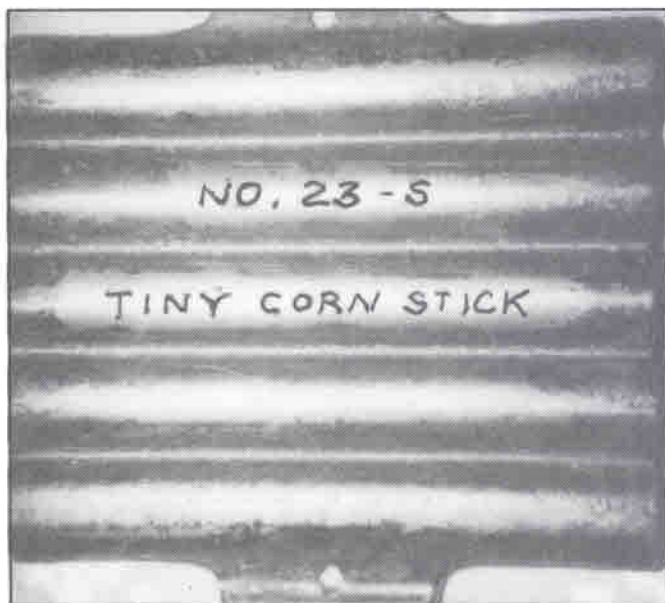
RW: Thanks for your letter and interesting comments. Being the piece is German, I have no idea as to the manufacturer. Maybe one of our readers can comment. – ed.

Dear Mr. Smith: I have another Griswold pattern number for your list. Pattern #830 on a round bottom, three legs,

No. 9 ERIE Safety Cooker, pat Mar 10, 91 that I have in my collection. Would you answer a couple of questions for me? Question #1: What is the trivet for Safety Cookers made of and why no pictures of this trivet in "The Book"? Question #2: what is a #8 Safety Cooker complete with tin lid and trivet, marked Safety, p/n 858 #8 worth? "The Book" only shows safety cookers on page 73 with slant EPU. PS: I never received my index with Volume 5. – FD

FD: The trivet for the Safety Cooker was made of tin and fit about half way down inside the kettle. There was no photo of the trivet in The Book because I didn't have one to photograph. There will be a photo in the next book which I am working on. Although not really common, the Safety Kettles marked Erie are more common than the kettles marked with the slant logo. I would value them at about \$150. – ed.

Dear Dave: I came across the muffin pan shown in the enclosed photos, recently. It is similar to the #21 Griswold, and appears to be well cast, but the model number and name are not as well done; hence my use of pen to accent. It measures 6 7/8" wide x 6 1/2" tall, including handles, has only five rows, and is divided in half like a #23 Griswold Bread Stick Pan. Any thoughts as to origin and value? – LR



(Continued on Page 62)

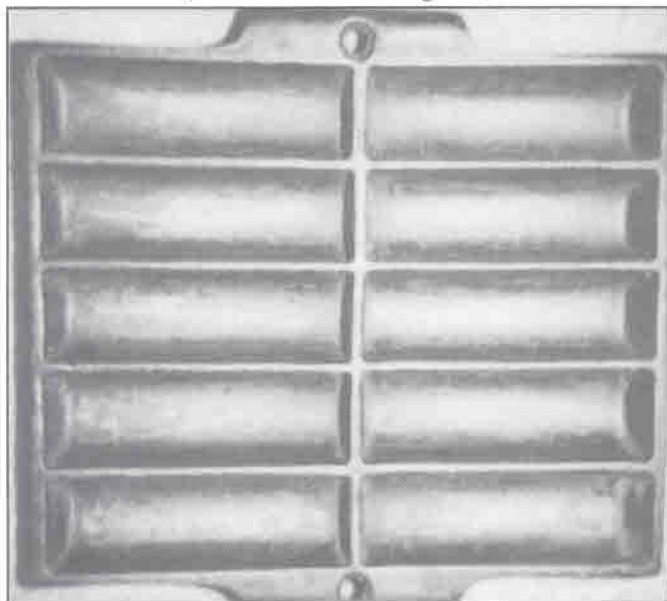
Back Issues Kettles 'n Cookware Available by Volume (6 issues)

Volume 1 or 2 \$15 Volume 3, 4, or 5 \$20

Kettles 'n Cookware
Drawer B, Perrysburg, NY 14129

The Melting Pot

(Continued from Page 61)



LR: This piece has been the topic of many a debate. It has more characteristics of a Wagner piece than a Griswold piece; the style of lettering, and the hole in both handles. This piece is relatively common so I value it at about \$45. Of course, if its identity is established someday, the value will probably increase substantially. Using the pen to highlight the markings is a good idea! – ed.

Dave: This piece is just as clean and sweet as can be, and seems unusual in the hollow handle configuration. There is a small #2 sitting inside the top of the handle. I'd be interested in what you know about it. – LG

KETTLES COOKWARE ADVERTISING

Rates are \$2.50 per column inch
(or fraction thereof)

Minimum \$5.00 (Column Width: 3.5")

Your Business Card or

2" Display Ad \$ 5.00

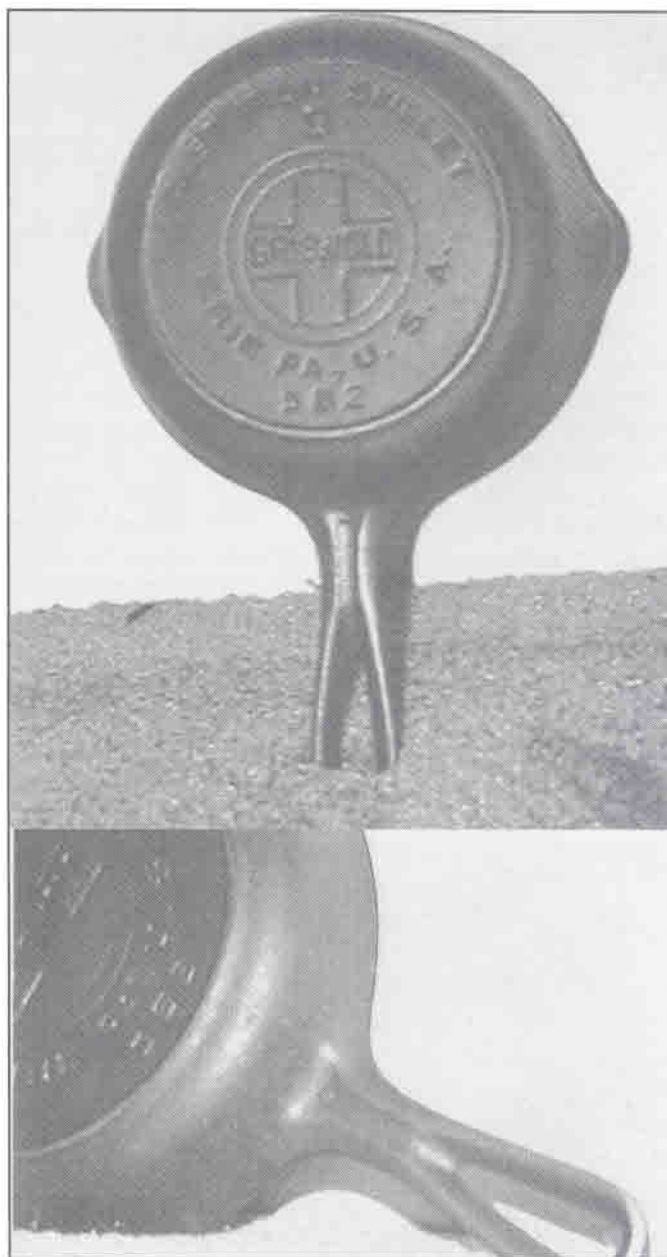
1/4 Page \$ 12.00

1/2 Page \$ 22.00

Ads with Photo \$ 6.00 extra

Rates are for Camera-Ready Copy

Questions? Call KnC at (716) 532-5154



LG: I have never seen the hollow handle No. 0 Skillet. Isn't it amazing how unknown items keep popping up. The #2 would be nothing more than a production control mark. Thanks for sharing your new discovery. – ed.

Dave: This is an odd looking piece in that the marking looks like Griswold, but obviously incomplete. The casting is smooth, but a little heavy. Did Griswold ever have seconds or rejects that maybe employees took home, etc.? – LG

(Continued on Page 63)

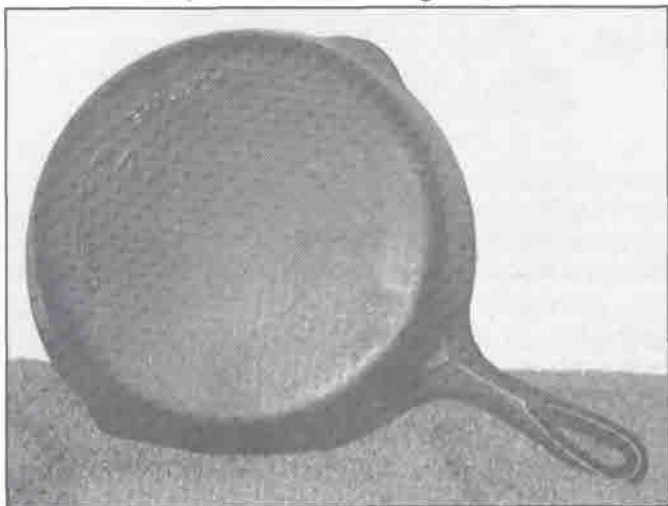
MOVING? Send Your Change
of Address to:
Kettles 'n Cookware

Drawer B, Perrysburg, NY 14129

**PLEASE NOTE: The U.S. Postal Service does not
forward third class mail!**

The Melting Pot

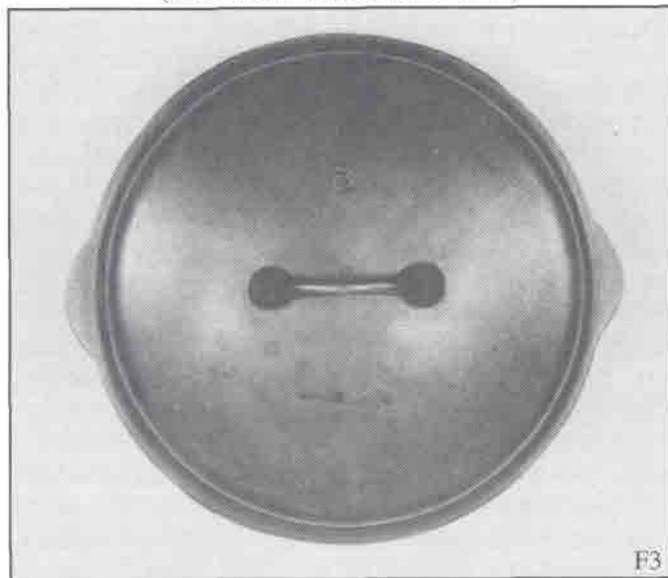
(Continued from Page 62)



LG: I would think there are two possibilities here. One is that this piece was cast during the period of Textron or General Housewares, thus the heavier weight, or that a Griswold skillet was copied and used as a pattern by another foundry. In either case, I don't believe this is a legitimate piece. This piece would be way beyond a second which an employee might smuggle home. — ed. ☺

Covers & Lids

(Continued from Front Cover)



F3

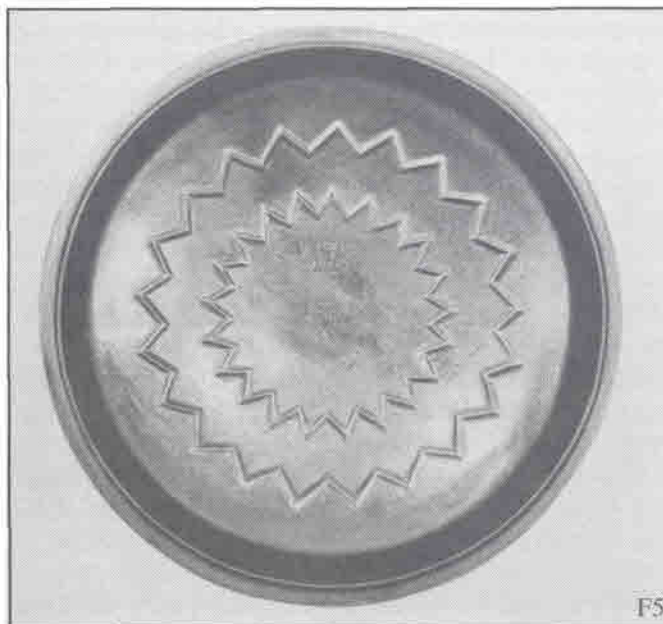
GRISWOLD: (F-3,F-4) The Iron Mountain skillet and Dutch oven covers are identifiable by the flared base of the handle (similar to the early Erie), and the broken basting rings. Of course, the pattern number helps also to identify it as Griswold.

WAGNER: (F-5, F-6) The zig-zag basting rings and the 5 ring cover design are typical of Wagner in the 1940's. The interior of this cover is marked with the stylized logo.

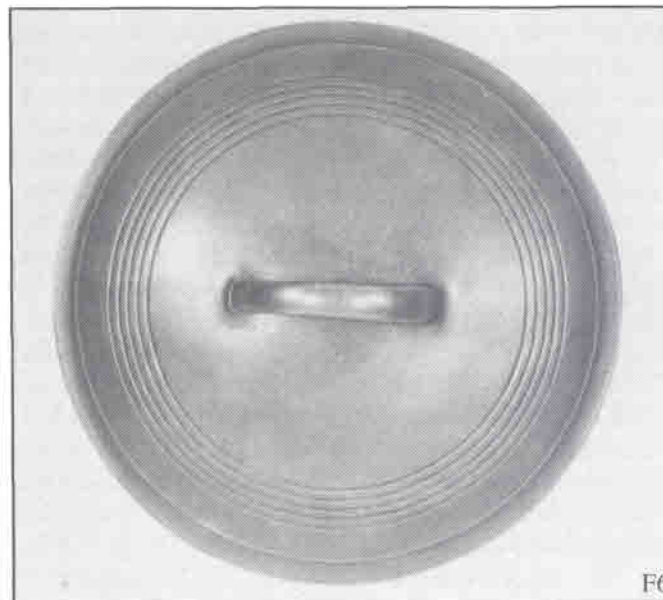
(Continued on Page 66)



F4



F5



F6



The Swap Shop

KEY:

p/n	=	pattern number
w/	=	with
SR	=	Smoke Ring
HR	=	Heat Ring
ISHR	=	Inside Heat Ring
TM	=	Trade Mark
btm	=	bottom
EPU	=	Erie, Pa. USA
var	=	variation
emb	=	emblem
mkd	=	marked

GRISWOLD FOR SALE: #15 Oval Skillet \$300; #6 Tite Top Dutch Oven w/full writing cover \$300; Skillet Covers- E12 Low Dome Smooth \$75, #6 High Dome Smooth \$60; Cookie Sheet #18, p/n 1108 \$100; #1739 Large Coffee Pot Trivet \$100; #18 Heart & Star Waffle Iron w/high base \$165; Skillet Griddles #108 LE smooth p/n 201 \$75; #109 LE HR p/n 202 \$125; 2 Step Stool \$200; Hinged Skillets #3,5 & 7 \$40 each; Long Griddle #7 p/n 907 \$60. Chris Gillespie, RR 1, Box 670, Brownfield, ME 04010 (207) 935-4357.

GRISWOLD FOR SALE: #14 Turkshead Muffin Pan \$1100; #13 slant EPU Skillet \$1300; (Would be willing to trade above items on #5 block HR Skillet plus cash); #12 block HR Skillet \$100; #4 sm emb smooth skillet \$40. **WANTED:** #5 Block HR Skillet. UPS extra. Scott Lamb (814) 237-3303.

GRISWOLD FOR SALE: No. 14 Skillet, lg block w/ HR \$150; No. 7 Dutch Oven \$90; No. 8 Skillet, sm emb, red & cream porc. \$50; No. 7 lg block Skillet w/HR \$55; No. 9 Skillet, lg block, smooth btm, chrome \$70; N.E.S. No. 11 Muffin Pan \$35; No. 3 Iron MT Skillet p/n 1031 \$35; No. 3 Sq. Skillet p/n 2103 (nice) \$165; No. 7 Waffle Iron w/button hinge, 1880 pat. date \$115; Erie No. 8 Muffin Pan, mkd Erie on one end 946 other end \$75; Erie No. 8 Muffin Pan p/n 946 only \$75; No. 7 lg block Skillet, smooth btm \$35; No. 9 slant/HR \$40; No. 9 lg block w/ HR & Low Dome Lid \$110; No. 10 Chuckwagon Dutch Oven, Brand New, paper still in btm p/n 180, paper mkd Griswold Sidney Ohio \$375. **WAGNER:** No. 8 Skillet w/HR center logo \$55; Wagner (arc) No. 6 Skillet w/HR, nickel \$45; National No. 7 Skillet w/HR, minor pitting \$30; Alum. Omelet Pan No. 820 \$35; No. 10 Skillet, sm btm \$45; No. 8 Magnalite Roaster w/trivet & book \$35; "Wagner" No. 14 Bail Handle Griddle \$85; Wagner Ware No. 123 sm btm Skillet \$80; "Sidney" No. 11 Skillet \$125.

FAVORITE: No 12 w/HR, slight warp \$55. **VOLRATH:** No. 6 Dutch Oven \$225. Doug Brown, 8520 McDougal, Thornton, CO 80229 (303) 288-5910.

GRISWOLD FOR SALE: #14 Bailed Skillet \$800; Burglar Alarm w/box \$800; Thimble \$800; Sundial \$500; Bundt Pan \$900; Safety Kettle w/lid \$250; #1 Ice Shaver \$135; Square Skillet w/ Cast Iron Lid \$300; Clows Waffle Iron \$225; Double Broiler- Erie \$350; Double Broiler- Griswold \$250; Spittoon \$2,000; #11,12,13,14 Long Waffle Irons \$2,250; #0,00,1,2 Waffle Irons \$3,000; More Waffle Iron Sets, all guaranteed, plus shipping. Too many items to mention, Last year in club, selling collection. Richard Miller (717) 485-3412.

WAGNER WANTED: "Skillet Roaster" w/matching Lid, #8 or #9; "Chicken Fryer" w/matching Lid #8 or #9; #8 Skillet Oven" #1275-1 & #1275-2 w/Base; "Pie Logo" Skillets; #4 Skillet Lid. Arlo J. Chapman, PO Box 506, St. Charles, IL 60174-0506. Call (630) 377-8948 CST.

GRISWOLD FOR SALE: #10 D.O. Trivet \$40; #8 Early Victor Skillet (with gate mark) \$35; #282 Corn or Wheat Stick Pan (var 1) \$450; #28 Wheat Stick Pan (var 1) \$225. **WAGNER:** #4 Flop Griddle \$225; C Turk Head Pan (only mark C) \$50; Turkhead head Pan (open frame) \$100; **OTHER:** Reid's Pan (Dec 1870) \$200; Book "Griswold Muffin Pans" \$32.95 (\$29.95 & \$3 shipping). Jon B. Haussler, 1806 Brownstone Ave. SW, Decatur, AL 35603 (205) 351-8567.

GRISWOLD FOR SALE: #7 Coffee Pot Trivet \$90; #11 Tite Top Baster (bottom only) \$80; #11 Tite Top Dutch Oven w/raised letter Lid \$275; #20 Hotel Skillet, Lg Block EPU \$550; #11 Erie Flat Top Dutch Oven Lid w/p/n \$80; #9 Tite Top Dutch Oven Lid, raised letter \$30; #10 Tite Top Dutch Oven Lid, smooth top \$30, raised letter \$45; #6 Tite Top Dutch Oven Lid, smooth top \$60; Odorless Skillet, Pat Oct 17 1893 \$60; Stove Dampers- 14" \$100, 3", 4", 5", 5 1/2", 6" 3 for \$10; #8 Flat Btm Kettle \$55; '0' or Toy Skillet \$60; ERIE #10 Handle Griddle, mint, \$45; Lamb Mold \$85; Lamb Mold box (nice) \$20; #8 Raised Logo Dutch Oven, chrome \$50; #15 Oval Fish Skillet w/prototype Lid (photo pg 30, vol. 3, No. 3 KnC) both excellent \$1,200; #9 Slum wood Handle Skillet (photo pg 29, btm rt. The Book) \$60; #7 ERIE Tea Kettle, alum \$75; #18 Griswold's Erie 6-cup popover Pan \$70; #109 Skillet Griddle, slant w/SR \$110; #108 Skillet Griddle, block w/SR \$110; No. 8 Muffin Pan w/ ERIE & p/n, alum \$50; No. 15 Muffin Pan, var 2 \$220; #11 Waffle,

(Continued on Page 65)

The Swap Shop

(Continued from Page 64)

High Base, raised emb. \$115; #12 Skillet, slant ERIE \$110; #12 block \$85; Alfred Andresen Patty Molds in box \$20; #26 Vienna Roll Pan var 1, \$110; #17 French Roll Pan, var 2 or 6 \$150 ea; #6 Dutch Oven Trivet, iron, fully mkd \$120; Seldon Griswold Waffle Iron, web pattern \$265; #3 Muffin Pan w/ logo \$340; #18 Heart & Star Waffle, low base \$130; #9 Deep Skillet, lg block, smooth btm \$95; #9 Skillet Lid, low dome, raised letters \$60; #9 Wood Handle Skillet, lg block, smooth btm \$75; rabbit Mold, excellent \$250; 2 Qt alum Tea Kettle, slant emb \$75; #2601 36 Sq Skillet \$90; #6 Skillet, block emb w/SR, excellent, \$60; Sq Fry Skillet p/n 768 \$45; Puritan #10 Dutch Oven \$85; Sq Egg Skillet \$30; colonial Breakfast Skillet \$30; Skillet Griddle #108, lg Block, smooth btm, Exc, \$50; #5 Oval Roaster, alum, smooth top \$55. **WAGNER:** #10 flat Top Dutch Oven \$90; WW #2 Skillet \$135; WW stylized logo #6 handle Griddle \$110; #10 raised letter Dutch Oven Lid \$40; Deep Fat Fryer w/Lid \$130; WW 'U' Pan, fully mkd \$150; WW 'O' Pan, original but not mkd \$115; WW 3/1 Breakfast Skillet, alum, wood handle \$40; WW roast & Bake Pan 4007P \$25; WW #1340 Little Slam Bridge Pan, plated \$115; WW 6-cup Vienna, solid frame 'I' Pan \$120; WW 'Q' Pan, solid frame, plated \$35; WW #453 Alum Juicer \$35; WW #7 Oval Roaster w/trivet, alum \$35. **MISC:** Wapak #7 or #8 Sad Iron \$30; Reid's Pan 1870 date \$160; Waterman #3 Muffin \$35; 18 hole golf Ball Pan, solid \$95; Cow boy Hat Ash Tray, cast iron, no markings \$50; Favorite #16 Radiant Gas Heater (nice) \$300. **WANTED:** Griswold #14 Skillet Lid, raised letter; Favorite 4 cup Vienna Roll Pan; Detroit Stove Co. 2-cup Vienna Roll Pan; WC Davis Muffin Pans; Barstow Stove Co. Bread Loaf Pan; Atlantic Bead Pans; Wagner Bread Loaf Pan; Favorite 2-Loaf Corn Bread Pan; Fireplace Tea Kettles w/tilter lever; Unmarked 4-cup Vienna Roll Pan. Most items are in excellent condition. UPS extra. Robert Karle, 344 R. 147, Middlefield, CT 06455 (860) 349-1212; best time 7-9 PM Eastern Time.

GRISWOLD FOR SALE: No. 20 Cast Iron Skillet, block, no p/n, but nice \$350; No. 3 "Cliff Cornell" Skillet, excellent \$300; No. 7 p/n 217N Aluminum Skillet w/ Alaskan Coil handle (unusual & nice) \$100; No. 10 Diamond logo rectangular Griddle, good condition, \$100; No. 10 p/n 716, block, smooth btm, nickel/chrome Skillet (near mint) \$50. All reasonable offers considered, including trades. Contact Mike Allen (888) 497-4433 (days) or 330-418-1909 (evenings EST).

WAGNER FOR SALE: T-Size Cornstick (nickel plated) \$45; 'O' Skillet \$50; #2 Skillet \$115; 'O' Tea Kettle \$125; Jr Alum Cornstick \$25. **OTHER:** Cleveland Superior 3 1/2" Footed Kettle \$55; Hotel James Madison Advertising Spider Skillet \$35; Mini-Sad Iron Trivet, no markings \$25. **GRISWOLD:** #6 Low Lettered Lid \$250; #10 Low Lettered Lid \$100; #6 Logo Top Lid \$175; 5,6, & 7

Smooth Top Lids, 3 for \$100; #3 Mailbox \$40; Lg Decorative Trivets, choice \$25; Set of Sm Decorative Trivets \$150; 8,9, & 10 D.O. Trivets 3 for \$100; 8&9 Waffle Iron w/button hinge \$70; Adam's Co. Sundial p/n 357 \$350; Single Sided Heat Regulator \$200; #850 Service Plate w/original sticker \$100; #848 Steak Plater (mint!) \$45; 'O' Skillet \$95; #12 Hotel Waffle Iron \$375; '000' Service Kettle Lid \$225; Griswold Pup \$300; Aluminum Bean Pot & Lid, 2 1/2 Qt, p/n 422 1/2, \$150; 100th Anniversary Skillet, G.W. Co. p/n 667 \$100; Use Erie Best Tea Kettle \$475; "Erie" toy Skillet \$275; "Erie" Toy 3-Legged Kettle \$275; Erie Flop Griddle \$350; Best Made or Puritan Corn \$85 ea; Merit Cornstick \$135; #5 Gem Pan w/logo \$495; No. 14 Gem Pan w/cutouts \$600; 2700 Wheat & Corn \$400; 280 Cornstick (stripped iron?) \$800; Erie Fluter w/removable handle \$350; Grand Union Coffee Mill \$600; #2 Smooth btm Skillet \$400. **WANTED:** #2 Wood Handle Skillet; #5 Logo Gem Pan w/EPU; Use Erie Best Griddle; 26 & 28 Bread Pans; Wagner Toy Skillet Cover & Handle Griddle; #2 3-cup Popover mkd Wagner Ware; "Erie" Aluminum Miniatures & Diamond Logo Miniatures. **FOR TRADE ONLY:** #3 Low Lettered Lid; 'O' Griswold Handled Griddle; 'O' Favorite Waffle Iron; #3 Hammered Skillet & Lid (black iron). Call Dave at (814) 899-7926.

ALUMINUM FOR SALE: Wagner #459 Krusty Korn Kobs G/VG \$75; Wagner Vienna Roll Pan, no #, G/VG \$125; Griswold #8028 Whole Wheat Stick Pan #A8028, VG/EXC \$250; Griswold Aristocrat Ware #A2083 Deer Platter w/wooden Frame VG \$125. Add post all prices. Lawrence M. Rochette, 169 Woodland Drive, Marlborough, MA 01752 (508) 481-3204 evenings.

GRISWOLD FOR SALE: #5 hammered/hinged Skillet & Lid, nice \$125; #8 Hammered/hinged Double Skillet \$135; #8 Hammered/hinged Dutch Oven & Lid \$125; #6 Vienna Gem Pan #958, var 5 \$100; #10 chuck Wagon Dutch Oven & Lid \$175; Lamb Mold #866 \$90; #7 Waffle Iron w/#2428 High Base \$125; #18 "Cookie Sheet" family Grill \$90; #1 Patty Mold Set w/Box \$25; #2 Patty Mold Set w/Box \$35; #3 Combination Patty Mold Set w/Box \$85; "ERIE" Tea Kettle, alum \$50; SKILLETS: Hinged/smooth #5 \$40, Slant EPU HR #5 \$50, #9 \$45; block EPU HR #7 \$45, #9 \$40, #12 \$95; block EPU smooth #4 \$55; Small Logo, Early handle #12 HR \$65, #12 HR \$65; Small Logo, Late handle #10, \$30; Grooved handle #4 \$35; SKILLET LIDS: Raised Logo #7, chrome \$50; High Dome Smooth #7 block \$70, #10 \$65; Low Dome Raised Letter #8 \$50, #9 \$70. **WAGNER FOR SALE OR TRADE:** Square Waffle Iron \$125; #1402 Double Skillet, hinged, \$85; #5 Oval Ring Lid \$65; #1363 Hot Pot w/Lid \$75; "E" Gem Pan #1336, nickel \$30; "S" Popover #1337, nickel \$30; Tea Size Corn Stick \$50; SKILLETS: W/W 4 Digit ISHR #14 \$175; Pie Logo #3 \$25; W/W w./size #9 \$35, #10 \$50; W/W HR, 4 digit #4 \$50; W/W Smooth 4 digit #7 \$60; ALUMINUM: #5 Deep

(Continued on Page 66)

The Swap Shop

(Continued from Page 65)

Hammered Oval Roaster w/trivet #3266 (like new) \$150; Serving Platter, hammered #3342 (like new) \$50; #5 Oval roaster w/Lid #265 \$65; 'R' Pan, solid frame (never been used) \$50; Omelet Pan #821 w/Wood handles \$30; Al Carder Sizzling Steak Platter #334 \$30; #7 Dutch Oven Lid #247, raised letter \$24; #8 Dutch Oven #248 Raised Letter Lid \$40; Scoops: #902 \$25, #912 \$25, 4 3/8" x 11" \$20, Wood handle Coffee \$35; Lard Ladle 20. **MISC. FOR SALE OR TRADE:** Lodge #7 Deep Skillet w/top writing Lid \$75; Favorite Double Skillet, (looks like #1403 Five Star Set) \$75. **GRISWOLD WANTED:** #3 Hammered/hinged Lid w/or w/out Skillet; Hammered Handle Griddle; #3, #5, & #8 Hammered Skillets w/Lids (not hinged); #4, #5, #6, #11, #13 & #14 Low Dome Raised Letter Skillet Lids; #5 Victor, fully mkd; 315 Oval Lid; Round Breakfast; #235 Base for Clows Waffle Iron; Button Hinge Base for Web Pattern Waffle Iron; #8 Chuck Wagon Lid; #71 & 870 Patty Bowls; Santa & Rabbit Molds; #6 Tite Top Baster w/lid; #13 Tite Top Dutch Oven Bottom (prefer block). **WAGNER WANTED:** #1219 Warm Over w/Lid; #1275 Skillet Oven; #1362 Patty Bowl; #1364 Hot Pot w/Lid; #8 Chuck Wagon Dutch Oven Lid; #2, #4, #11, #12, #13, #14 W/W HR w/size no. Skillets; #2, #11, #12, #13 WW/W 4-digit HR Skillets; Pie Logo Skillets except #3, #7, #10, & #14; #2, #13 & #14 W/W Smooth Btm Skillets; National Skillet Lids; #5 & #10 Raised Top Writing Skillet Lids; Most Dutch Oven Lids; 11 Inch Chef Skillet; #6 Dutch Oven & Lid, #11 Long Griddle; #6 & #11 Round Roasters with Knob Lids; #2 Scotch Bowl; Twin Waffle Iron Base; 1-pair Sausage Pans for Twin Base; 'O' Waffle Iron & Handle Griddle. Don Starkey, 11500 E. San Ramon, Clovis, CA 93611 (209) 299-2818.

Deadline for Next Issue—January 5th

Covers & Lids

(Continued from Page 63)



Figure 7

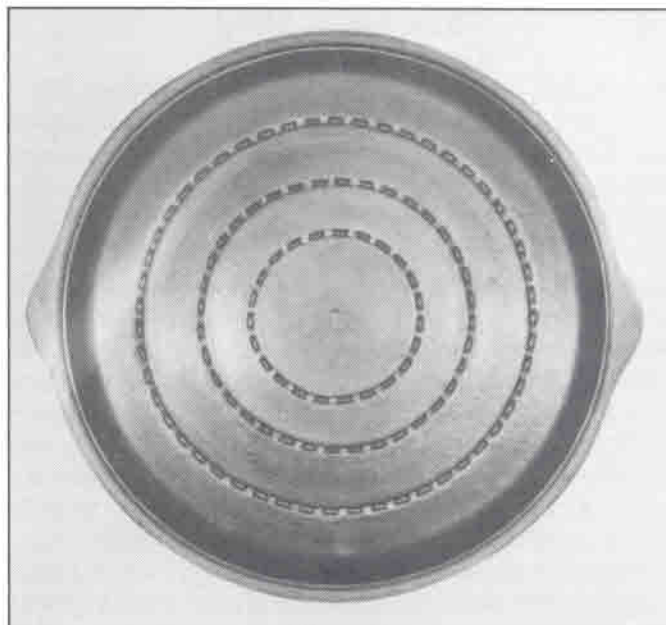


Figure 8

WAGNER: (F-7, F-8) Wagner skillet covers tend to be quite heavy, although well finished. This cover is marked only with an 'X' but it is identifiable by the looped basting rings which Wagner used on their unmarked line. The basting rings are solid but fluted. Also, note that the handle is tapered from end to end, similar to Lodge. This cover is rounded, unlike the Lodge covers which are flat on top.

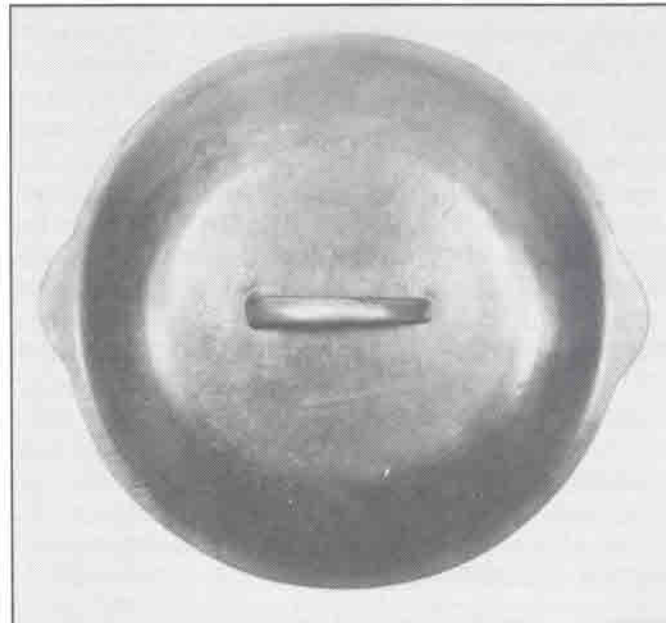


Figure 9

LODGE: (F-9, F-10) Lodge covers are most recognizable by the knobs or buttons on the interior. The purpose of these buttons were for basting. The cover is also quite flat at the top. Also note the tapered handles, similar to the Wagner covers.

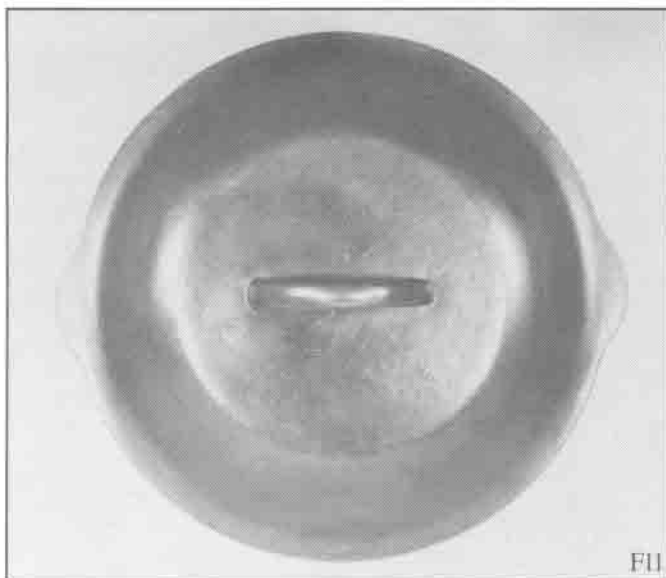
(Continued on Page 67)

Covers & Lids

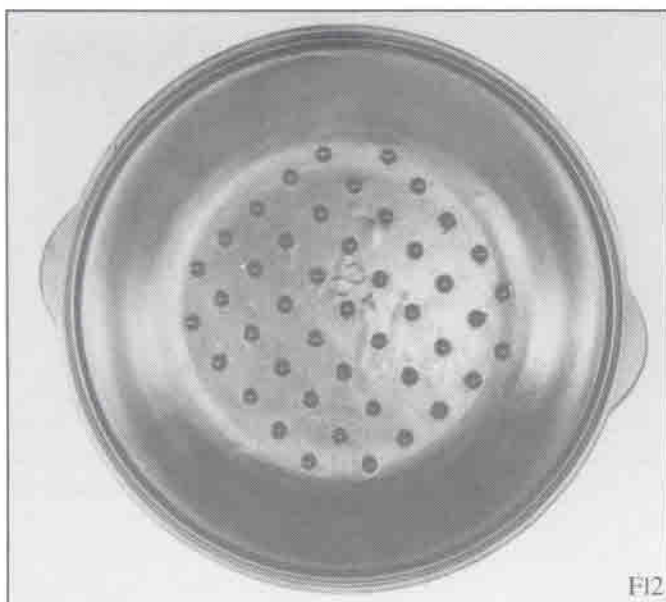
(Continued from Page 63)



F10



F11



F12

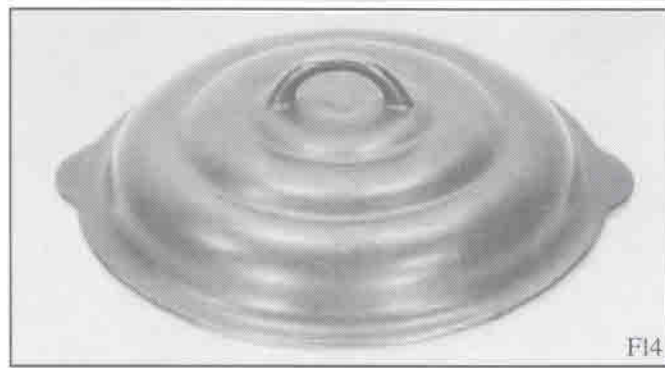
LODGE: (F-11, F-12) This Lodge skillet has the typical drip or basting nubs. Also characteristic of Lodge was the random placement of letters and numbers. This one has an incised '8' and a raised letter 'T'. According to Lodge personnel, the raised letters were applied to the pattern prior to casting as a quality control reference.

LODGE: (F-13) Although there were no markings on the inside of this Lodge cover, it does have the basting nubs. This cover is also flat at the top, and has a raised number 8.

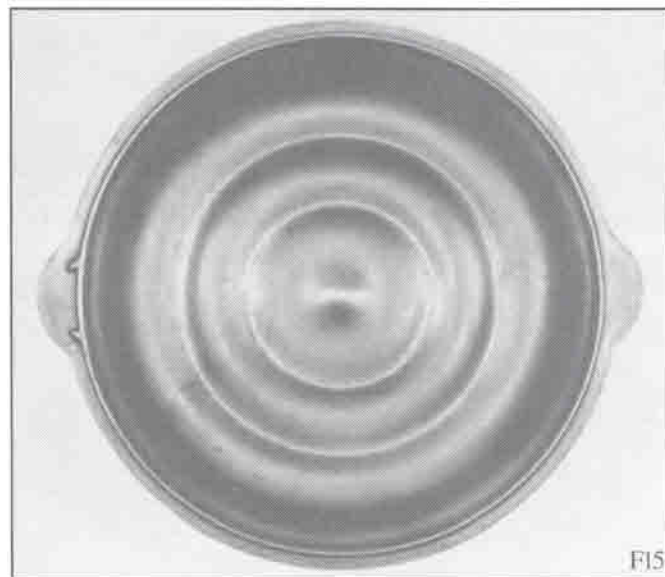
MI PET: (F-14, F-15) This Mi Pet Skillet cover has a unique domed shape. This style is also found on the O'Brien & O'Brien.



F13



F14

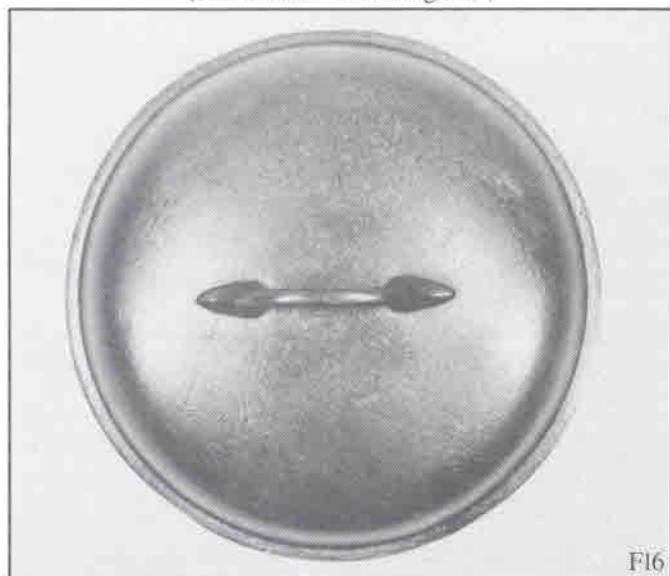


F15

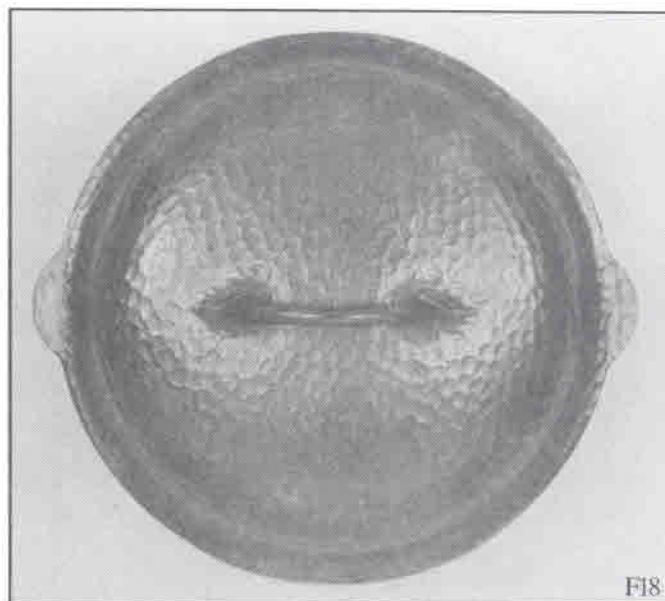
(Continued on Page 68)

Covers & Lids

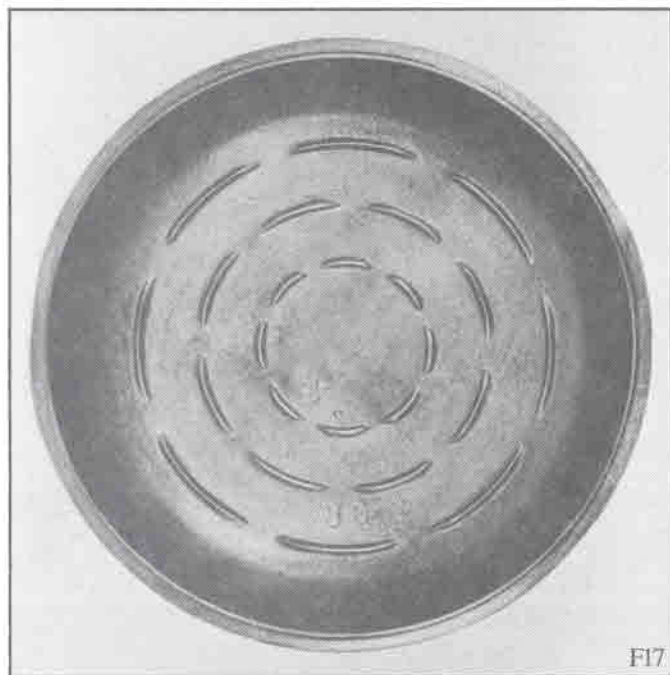
(Continued from Page 67)



F16



F18



F17



F19

FAVORITE: (F16, F17) The tear drop and slightly pointed handles are the significant identifying trait on Favorite. Also note the broken basting rings. The interior is marked '8D'.

(Continued on Page 69)



F20



F21

Covers & Lids

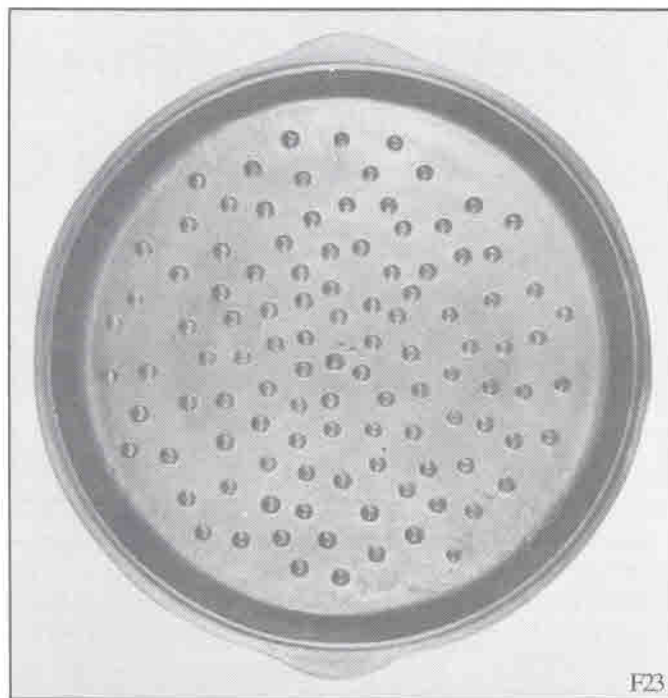
(Continued from Page 68)

FAVORITE: (F-18, F-19) These handles are a modified tear drop identifying this as Favorite - Chicago Hardware. Apparently the Chicago Hardware Co. purchased the Favorite line when the Favorite Stove Works folded. The basting ring pattern is similar to the Favorite Dutch oven cover. The interior is marked with the letter A.

MARTIN STOVE & RANGE: (F-20, F21) The most predominate feature identifying this as a Martin cover is the unique handle. Note the pointed protrusions at the ends. This cover also has broken basting rings, but they are a different configuration, such than other makers such as Favorite.



F22



F23

WAPAK: (F-22 & 23) This cover is from a Wapak deep skillet. Basting dots on the interior are indented instead of protruding and appear to be placed at random. It seems their effectiveness would be questionable.



Ideas for Christmas Giving

 **Gift Subscription to
Kettles 'n Cookware**

We can issue a Gift Certificate!

 **BOOKS**

The Book of Griswold & Wagner
\$32.95 pp

Griswold Cast Collectibles - Harned

This is the book that started it all! Contains photos, recipes, list of patents, illustrations of various logos, and lots more not included in other references. This book is out of print so don't wait to acquire this valuable reference.

\$15.00 pp

Campers Guide to Outdoor Cooking - Ragsdale

5 1/2" x 8", 170 pgs. This book covers everything from selecting wood for the fire to preparing desserts. It advises on meal planning and cooking tips. This is an excellent book for the camper.

\$9.95 pp

Dutch Oven Cooking - Ragsdale

5 1/2" x 8", 70 pgs. A great little book for the beginner or expert. It's packed with dozens of simple recipes - the official Boy Scout Dutch oven cookbook.

\$5.95 pp



CATALOG REPRINTS

Wagner - Catalog No. 58 reprint c.1931 \$20.00
8" x 10", 24 pages, glossy stock, full color cover, pictures are photo clear.

Griswold - 1890-91 Catalog reprint c.1890 \$20.00
6" x 9", 77 pages. A great reference of Griswold's early products.

Griswold - Catalog No. 45 reprint c.1910 \$25.00
6" x 9", 138 pgs. This is a great reprint with photo sharp artist drawings.

Wapak - Catalog reprint c.1912 \$15.00
An excellent reference of products of the Wapak Hollow Ware Co. Includes skillets, griddles, kettles, waffle irons, gem pans and sad irons. Also illustrated are hardware items such as lawn furniture, urns, hitching weights, etc.

Please make checks payable to:

The Pan Man

P.O. Drawer B, Perrysburg, NY 14129



Casting Call



This Wapak skillet displays an unusual mark. Note the leg of the 'P' is split or tented. I guess we would call this mark the "Tented P."

If you have a special piece you would like featured in Casting Call, send a clear photo with a brief description.



THE KNC IRON NET (e-mail addresses)

David G. Smith	DGSpanman@aol.com
Joe Noto	DrJoNo@aol.com
Eric Wehmeyer	ewehmeyer@ix.netcom.com
Lamar Smith	<pblamar@link.net>
Patrick Bedwell	mrpotatohead@earthlink.net
James Kushlan	james.kushlan@med.ge.com
Bernie VerHey	GRISLI@aol.com
Herschel Mack	hlm2@axe.humboldt.edu
David Pierce	david@yokogawa-ia.com
Patricia Young	GRISANA@aol.com
Steven R. Russell	Canexpl@aol.com
Tom Moran	TJMjunkman@aol.com
Robert Grossman	RGross1831@aol.com
Marvin Scattergood	VEDG33B@prodigy.com
Suxanne Schwarting	sschwart@cce.cornell.edu
Diana Lynn	livingst@norwich.net
Ron Ewing	rewing@pacificrim.net
Dean Fitzwater	Ftzh20@aol.com

If you would like your name and e-mail address listed, send it to *KnC*!

Christmas Special



1996 Spider Charms

Gold \$210 ~ Silver \$95

Buy Two: Gold \$400 ~ Silver \$180

1 Gold, 1 Silver \$290

1997 Silver Pup Charms

\$95 each

Remember: The molds are broken. No more will be made!

Joannie Baldini

3007 Plum Street

Erie, PA 16508

(814) 868-1316 evenings

(814) 459-2503 days

Wagner Hotel Ware Catalog

1930s reprint featuring...

Wagner Ware Cooking Utensils

Pictures, Prices, etc.

A Great Reference!

\$12.00

Ken Wehunt

4774 Reinhardt Circle

Iron Station, NC 28080

(704) 735-8716

Kettles 'n Cookware is published bimonthly, six issues per volume.

COPYRIGHT 1997--All Rights Reserved. No part of this work may be reproduced without written permission from the publisher.

Subscription: \$20 per volume, including all prior issues of the volume, regardless of when you subscribe.

Checks payable to: Kettles 'n Cookware

Mail all correspondence to: David G. Smith, Publisher, Drawer B, Perrysburg, N.Y. 14129