

KETTLES



COOKWARE[®]

ENDORSED BY THE GRISWOLD & CAST IRON COOKWARE ASSOCIATION

Griswold Safety Kettles

By David G. Smith

Contrary to the interests of many collectors, pots and kettles have always interested me. There is something quaint and nostalgic about them. I can visualize them hanging from a fireplace crane, simmering stew over an open cook fire, or cooking many other wholesome meals on a wood or coal kitchen stove.

One utility type kettle was the Safety Kettle manufactured by the Griswold Manufacturing Company of Erie, PA. Two examples of their kettles were illustrated on page 73 of *The Book*. Those examples are of a later vintage, especially the kettle with the Griswold logo, the plain wire bail handle, and the Alaskan type pour handle, illustrated at the bottom of the page.

Collector Robert Karle recently found an example which I believe is the earliest version (fig. 2). The main feature that makes me believe it is the earliest is the pour spout that is cast as part of the kettle (fig. 2 & 3). This is typical of early Safety type kettles by other manufacturers. Missing from this piece is what was probably an iron hinged lid over the pour spout. To see this kettle at a



Figure 1

glance, I would not have guessed it was Griswold, although an experienced eye should recognize the design of the kettle ear even though it is somewhat masked by the protruding cover retainers (fig. 2). Turning it over, it is marked, ERIE SAFETY, and the pattern number of 830 (fig. 4). The marking PAT'D MAR '91 is the patent date of the kettle ear design.

The next marking in the sequence, I believe, is the "SAFETY" only

(fig. 5). Also note on this kettle, the cover retainers are inset so the cover will fit below the rim (fig. 6). This is different in that the cover of the earlier example fit on top of the rim.

Another topic of discussion among collectors has been the Safety Kettle marked Skinner Safety Co., with a Griswold pattern number. Did Skinner make this kettle, or was it in fact, made by Griswold? I guess figure 7 answers this question. This No. 10 (an unusual size) is marked SKINNER SAFETY CO, pattern number 862 (another duplicate p/n in the Griswold list), ERIE PA.

(Continued on Page 57)

From The Editor

-In May of 1997, the Federal Hobby Protection Act came up for review. The act requires manufacturers and importers of imitation political items, and numismatic items to mark plainly and permanently such items with the word "copy." It does not cover any other collectibles than those two. The movement to have the Act amended was led by Mark Chervenka of *Antique Collectors Reproduction News*, and Connie Swaim, editor of *Antique Week*. In the May/June issue of *KnC*, I put out a call for you to contact your Federal legislator in support of having the act amended to include all collectibles. Despite our efforts, the review committee for the Federal Trade Commission voted not to expand the benefits of the act to other collectibles. One of the reasons cited by the committee for not amending the act was that there are non-legal resources to educate the consumer about reproductions. One such resource they cited was newsletters which regularly warn collectors of reproductions. Hello *KnC*!! I will continue to publish warnings about reproductions, but I need your help. If you identify a repro or are the victim of getting stuck with one, notify *KnC*. I will publish it and thereby alert fellow collectors.

The Hobby Protection Act can be amended by an act of Congress. We in the collectors field need a strong voice in Congress, one which will advocate for the revision. If you know of a Senator or Representative in Congress who is an avid collector of anything (it does not have to be cookware) please contact him. Also contact me so we can enter into a joint effort to convince your representative to be our advocate.

- It is time for you to renew your subscription to *KnC*. A renewal form is enclosed. I want to thank you for your support this past year. I am working on some ideas for articles for Volume 8. I'm sure you will be pleased. I should be able to get more involved, creating larger articles, once I get *The Book Two* completed. Our target is now spring - I believe at this point that this is an attainable goal.

- ebay, the on-line auction is having mixed impact on the collecting field. Collectors are paying unreasonably high prices in several cases. It has also been reported that in many instances, the merchandise is not up to the quality advertised. Another affect it is having is that it is also taking good cast iron off the tables at shows and flea markets. Some dealers are now putting these items on e-bay to entice higher returns. I want to thank the sellers who continue to support *KnC*, offering purchasing opportunities to our fellow collectors and over four hundred subscribers. That is a darn good market in itself!

- The holiday season is here! I want to extend my sincere good wishes for this Holiday Season and wish you great luck in your acquisition of "iron" in 1999!! - Dave



GRISWOLD & CAST IRON COOKWARE ASSOCIATION

It's about that time again. Membership renewals are due! You will receive your G&CICA renewal packet by December 15th. Included will be your renewal card and our 1999 membership card which is attached. Tear off the card and return the renewal card with any corrections, and payment to the G&CICA. Do not make the payment to *KnC*!! If you are a *KnC* subscriber and a G&CICA member, make separate payments. Using the same return envelope is OK. Please use the card for renewal to the G&CICA! This card is used in the tracking process in two databases plus the annual handbook. Failure to use the renewal card creates a heck of a lot of extra work for the Secretary! Also, failure to return the renewal card may result in you not being listed in the handbook.

Included in the packet is a membership application. This is not to be used for your renewal. Give this to a fellow collector and encourage them to join the Association.



The Melting Pot

In the last issue of *KnC*, a question was asked regarding the Sperry Company. Joel Schiff provided information I would like to pass on to our readers. According to an early catalog, the D.R. Sperry & Co. was started about 1870, and was located in Batavia, Illinois. They had an extensive line of products including Farm boilers which went up to 75 gallons, laundry stoves, cauldrons & sugar kettles, hog scalders, Felloe Oiler for treating wagon wheels with linseed oil, oven doors, and an extensive line of hollow ware including skillets, pots, tea kettles, sad iron heaters, griddles, bread pans, gem pans, and waffle irons. They also manufactured wax ladles, lead pots, dumb-bells, hitching weights, anvils, gratings, post mauls, drug mortars, a cork press, and Oxygen Retorts which were used by physicians for oxygen gas treatments. They also made hitching posts and ornamental cast iron steps. I do not know the ending date of this company. -ed.

Dave: Here are pictures of an unusual Dutch oven cover I have. Note how the 'E' looks in ERIE. It looks like it is missing the middle line. Have you seen anything like this? -BW

(Continued on Page 61)

Safety Kettles

(Continued from Front Cover)

This example also has the remains of a Griswold sticker with instructions about how to use the cooker (fig. 8). I guess this confirms that Griswold did make the Safety kettles marked Skinner.

In *The Book*, the values stated for the Safety kettles were "complete with trivet". This raised questions by several readers as to what is the trivet? Why didn't we show one? Well the answer to the second question was that we did not have one to illustrate. They are very scarce! Safety Kettles are not common, and they are less common with the tin cover. The kettle complete with its trivet is very difficult to find. I always wondered what use the tin trivet served because it rested, lodged by the taper of the kettles sides, about two thirds from the top. Recently I acquired a promotional folder (fig. 9) which answered my question. The kettles could be used as a steamer, the

bottom being filled with water, and the food resting on the tin trivet. How clever! This also explains why the inside bottom of Safety kettles are usually pitted.



Figure 2

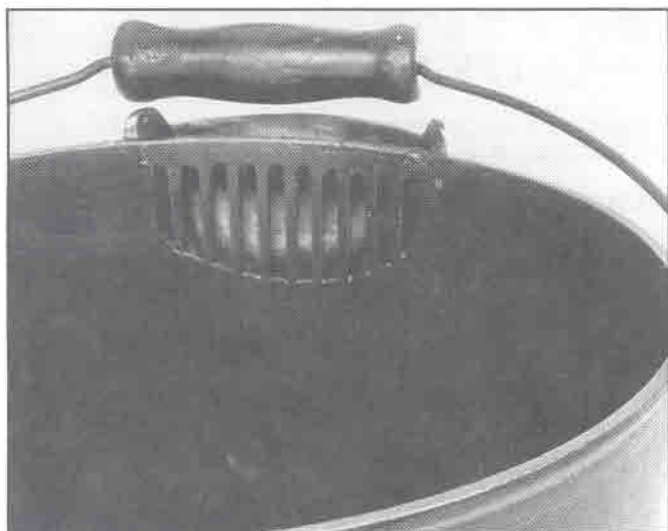


Figure 3

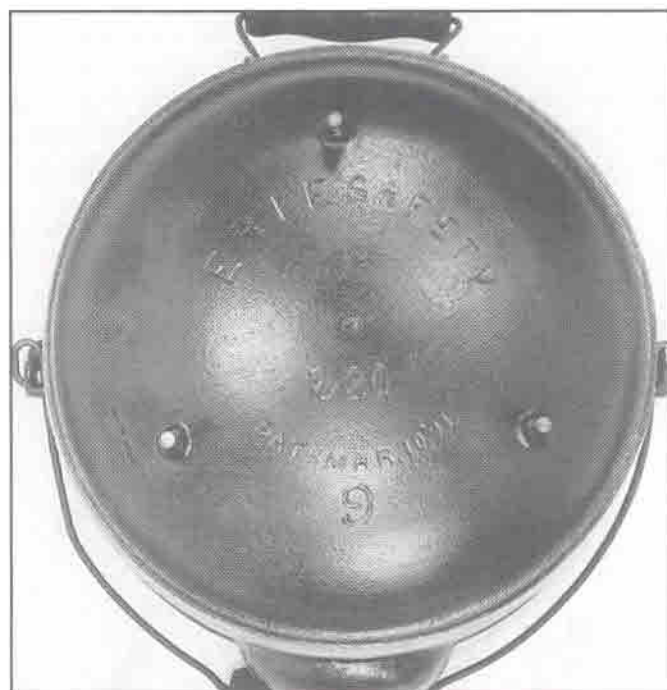


Figure 4



Figure 5



Figure 6
(Continued on Page 58)

Safety Kettles

(Continued from Page 57)

Even with the three different designs of the Griswold Safety kettle, and at least five marking variations, the best is yet to come. Collectors George & Melody Smith recently found a miniature or salesman's sample of the flat bottom Safety Kettle, complete with the tin cover and trivet (fig. 10). The miniature measures 4 3/4" in diameter. The bottom is marked SAFETY just like the big one.

In my opinion, this is a salesman's sample and is in

(Continued on Page 59)



Figure 7



Figure 8



Figure 9

KETTLES 'n COOKWARE® ADVERTISING

Rates are \$2.50 per column inch (or fraction thereof)
Minimum \$5.00 (Column Width: 3.5")

Your Business Card or

2" Display Ad	\$ 5.00
1/4 Page	\$ 12.00
1/2 Page	\$ 22.00
Ads with Photo	\$ 6.00 extra

Rates are for Camera-Ready Copy
Questions? Call KnC at
(716) 532-5154



Safety Kettles

(Continued from Page 58)

the same category as the mini Cuspidor found a few years ago.

Isn't it wonderful to know that there are still unknown treasures out there?

← Figure 10

MOVING?

Don't forget to include your subscription to KnC in your

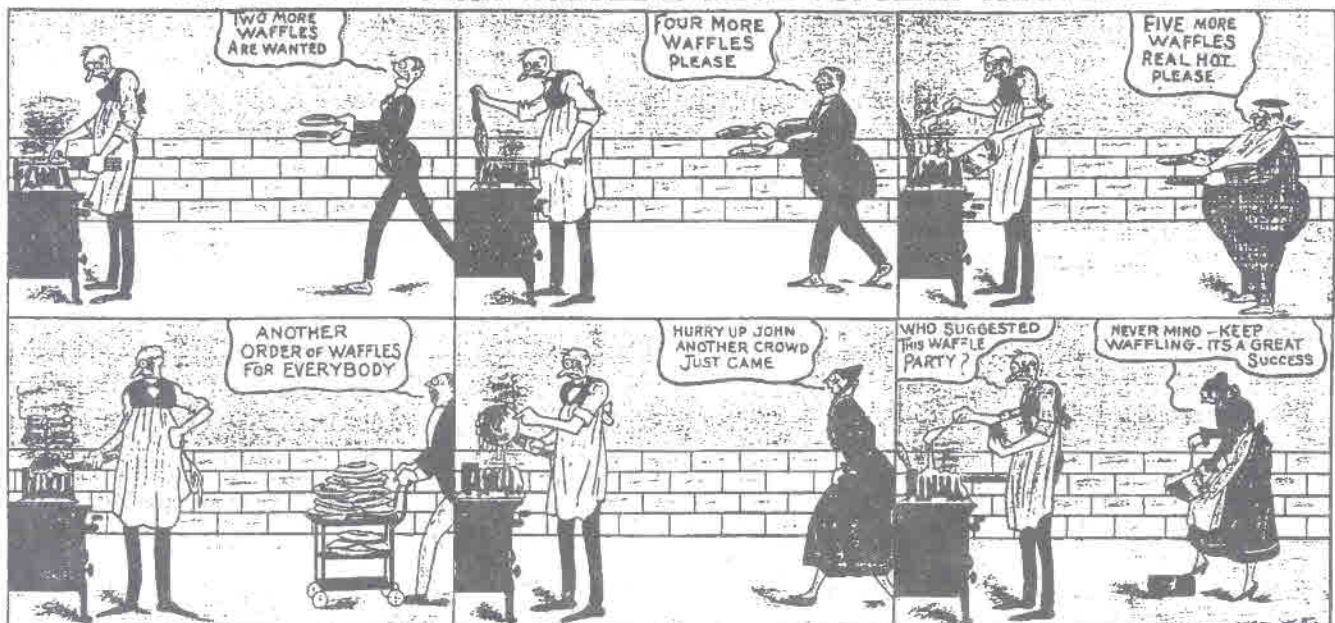
address changes. The U.S. Postal Service will not forward third class mail!

Write: Kettles 'n Cookware
P.O. Box 247
Perrysburg, NY 14129



GRISWOLD WAFFLE IRON

THE EVER POPULAR WAFFLE IS MORE POPULAR THAN EVER



"THE LINE THAT'S FINE AT COOKING TIME"

Reprinted July 1997
by T.J.M. and G.D.F.

Griswold Comic Strip Ad Reprint For Sale

This high quality 11 1/2 x 22 full color (red, yellow and blue) reprint originally published by the New York Evening World depicts a man preparing waffles for a "waffle party." The comic strip advertises the Griswold Waffle Iron, "THE LINE THAT'S FINE AT COOKING TIME."

Available for \$14.00 each or \$12.50 for ten or more post paid
Tom Moran, 13906 Hummingbird Circle, Choctaw, OK 73020-7114



The Swap Shop

KEY:

p/n	=	pattern number
w/	=	with
SR	=	Smoke Ring
HR	=	Heat Ring
ISHR	=	Inside Heat Ring
TM	=	Trade Mark
btm	=	bottom
EPU	=	Erie, Pa. USA
var	=	variation
emb	=	emblem
mkd	=	marked

GRISWOLD FOR SALE: Santa Cake Mold (small chip out of bar on back, otherwise excellent) \$650; #11 Dutch oven Trivet, p/n 209 \$60; No.2 Gem Pan, var 2 \$170; No.9 Gem Pan var 7 \$85; Best Made Wheat Stick Pan, No.1270 \$125. Postage and insurance included Call Dave B. at (607) 687-4388, or e-mail at pseq54b@prodigy.com

GRISWOLD FOR SALE: Slant logo/Erie No.9 Dutch Oven, p/n 834, Lid 2552, some pitting in btm \$105; No.12 Skillet Lid, smooth top, p/n 472 \$235; Iron Mt. Chicken Pan, p/n 1934 w/Lid \$50; No.6 Skillet, smooth btm, lg block \$27.50; No.6 smooth btm, Lg emb BL \$55; No.7 Sm Emb, smooth btm, hollow handle \$75; No.9 Skillet Lid, low dome, mkd in and out, p/n 469 \$85; Erie No.8 Muffin Pan, p/n 946 \$110; Erie No.8 Muffin Pan (no Erie on handle) p/n 946 \$100; Griswold No.6 Skillet Lid, High Dome smooth, p/n 1096 \$90; Erie No.7 Skillet inside HR, p/n 701H \$75; No.7 Skillet, smooth btm, lg block \$70; No.6 Skillet, Lg block w/HR \$80; Erie No.8 Skillet Griddle, p/n 738 \$75; No.34 Plette Pan, sm emb \$47.50; No.7 Skillet, Lg Block w/HR, chrome \$60; **WAGNER FOR SALE:** Wagner Ware No.9 c/n 1401 Skillet Roaster or Skillet oven(?), nickel \$225; Sizzle Server, c/n 1095 \$60; "Wagner" No.14 Bail Handle Griddle \$95; Wagner Ware No.12 Skillet, smooth btm \$90; "Wagner" Sidney (No '0') w/HR \$125; "Sidney" center mark, No.11 Skillet w/HR \$135; Sidney Holloware No.3 Scotch Bowl, chrome \$95; "Sidney" No.9 Skillet w/HR \$85; "Sidney" No.9 Skillet Griddle \$90; "Wagner" Sidney O No.6 Skillet w/HR, nickel \$55. **FAVORITE PIQUA WARE:** No.12 Skillet w/HR (slight warp) \$50; No.9 Skillet w/HR and lid \$115 for both; No.7 Skillet, smooth btm \$65; No.5 Skillet w/HR \$85. Prices do not include shipping. Doug Brown, 8520 McDougal, Thornton, CO 80229, (303) 288-5910

YOUR CLASSIFIED HERE - \$2.00
per 100 words, including numbers

Griswold Erie 100 Gas Heater, cast iron base with 3 legs, marked Griswold Mfg. Co. Erie PA on bottom; cast iron top with cast iron finial, tin body with cast iron face plate marked ERIE 100. Very light surface rust to tin body. Very minor bending to bottom of tin body. 19 1/2" tall overall. Very cute piece. Asking \$300. Stray Dog Antiques, 8A South Main St, Columbiana, OH 44408. (330) 482-1928. e-mail at strydogant@aol.com

GRISWOLD FOR SALE: Miniature cast iron #2 Erie teapot \$225; Erie #11 Skillet, old "quotes" \$95; 1 Qt. Hammered aluminum Pot A-2141 w/Lid A-2141-C \$45. **WAGNER:** Miniature cast iron Waffle Iron, circa Feb 22, 1910, original - no repro \$225. **OTHER:** The "Star" cast iron Fluter, excellent shape \$50. All plus shipping. Carl Rauch, 2765 Jack Rd, Chambersburg, PA 17201 (717) 267-0909 evenings best.

GRISWOLD FOR SALE OR TRADE: #3 high smooth Skillet Lid \$225; #11 Large Block HR Skillet \$140; #18 Popover var.5 \$60; #9 Sky Blue Porcelain low raised letter skillet lid w/matching block EPU smooth Skillet \$90; #5 slant EPU Skillet \$50; #6 Vienna roll pan, var 5 \$90.

GRISWOLD FOR TRADE ONLY: #13 tite Top Dutch oven Lid, raised letter w/3" hairline; #2 Erie Toy Teakettle; #2 Block EPU smooth Skillet; 4 cup Vienna roll pan (exactly like Griswold except no feet, gate marks on outside frame, hairline in frame). **Pick any item above for that #3 Hammered/Hinged Lid in black iron.** **GRISWOLD WANTED:** #3 hinged/hammered Skillet Lid w/wo skillet; #2, #4 & #20 Large Black HR Skillets; #5 full writing Victor Skillet; Base for fixed handle Fluter; Lid for #8 Erie Chuck Wagon Dutch oven; bottom to #7 Erie Dutch oven; #s 3, 5, 6, 13, & 14 low raised letter Lids; #s 3,4, & 10 low smooth lids; #s 3,4,5,6,7 & 10 high w/logo lids; all hinged lids except #5 & #8. Don Starkey, 11500 E. San Ramon, Clovis, CA 93611 (209) 299-1818

GRISWOLD FOR SALE: #11 block EPU \$165; Santa cake Mold \$650; "Standard" Tobacco Cutter \$195; #65 Snack Skillet \$65; Wafer Iron, casting flaw on one paddle, repaired base \$275; #9 Waffle Iron w/finger hinge \$95; #4 Skillet, lg block EPU, chrome \$65; #2 Deep Patty Mold set in box \$35; Sq. Egg Skillet #53 or #129 \$40; #768 Sq Skillet \$45; #28 Sq Skillet \$75; #55 Sq Skillet \$45; Colonial Breakfast Skillet \$45; Cliff Cornell Breakfast Skillet \$195; Cliff Cornell #3 Skillet \$195; #7 Erie Skillet, nickel \$15; #11 Erie Skillet, minor pitting on center of btm \$95;

(Continued on Page 61)

The Swap Shop

(Continued from Page 60)

#6 Skillet cover, high dome plain \$95; #8 Skillet Cover, high dome logo \$45; #8 Handle Griddle, single hole handle \$65; Tree Platter #A1082, aluminum \$75; Deer Platter w/wood frame \$125; Sad Iron, Griswold Erie \$95. **WAGNER FOR SALE:** Five Star Skillet set \$65; #9 Wood handle Griddle, stylized logo \$65; #8 Deep Skillet w/5 ring cover \$65; #9 Skillet, HR, w/raised letter cover \$75; #7 Skillet, sm btm w/4 digit number, nickel \$45; #9 Skillet, sm btm w/f digit number, nickel \$45; #9 Skillet w/4 digit number, black iron \$65; 1129 Angus Broiler Skillet, double mark \$35; #11 Skillet, stylized logo, nickel \$75; #5 Oval Roaster w/raised letter Cover, nickel \$225. **OTHER: FAVORITE:** Puritan #8 Skillet w/cover \$65; #10 Skillet Cover \$65; Mi-PET #3 Skillet \$45; AMERICAN IRON & BRASS #12 w/Paddle Wheel Boat \$65. Buyer pays shipping. Dave Smith, PO Box 247, Perrysburg, NY 14129. (716) 532-5154; e-mail panman@utec.net. web page: www.panman.com.

~~~~~  
Deadline for next issue - January 10th  
~~~~~

The Melting Pot

(Continued from Page 56)



Back Issues of K'nC

(Vol. 1-6) provide **346 PAGES**
of reference & information!

Volume 1 or 2 \$15
Volume 3, 4, 5, or 6 .. \$20

Kettles 'n Cookware

P.O. Box 247, Perrysburg, NY 14129



BW: This is a dandy! The word Griswold is spelled wrong with the 'I' and the 'R' being reversed and the middle line of the 'E' in Erie is sure missing. I have never seen this. Maybe our readers can give us some feedback. It is amazing that this slipped by Griswold's quality control. -ed.

Dave: I've located a cast iron lamb cake mold but I cannot locate a manufacturer mark on it. What are the identifying marks I should be looking for? -CC

CC: Griswold Lamb molds are illustrated in The Book. Although the Lambs are not marked Griswold, the pattern numbers on the tabs tell the tale. The Wagner Lamb mold is not marked but has round supports verses the square or rectangular supports on the Griswold molds. The Wagner lamb mold is larger than the two common Griswold varieties and has more facial details such as the nose and mouth. The Lodge Mfg. Co. also made a Lamb cake mold very similar to the Wagner mold but the Lodge mold is smaller than the Griswold Lamb. Both the Wagner Lamb mold and the Lodge Lamb mold will be illustrated in The Book 2. Lamb molds were also made in France and Germany, and were unmarked. The examples I have seen are very similar to the Griswold early Lamb with the legs forward. They are so similar that it makes me wonder who made that pattern first, the French, the Germans or Griswold? -ed.

Dear Dave: I noticed that in your Jan-Feb 1997 issue of K'nC there was a question as to whether an "ERIE" 12 skillet "There Beginning" existed, or not. It does. It has an 8 1/4" gate mark on the bottom, roughly from the 8:30 to 2:30 position. The quality of the iron isn't even as good as their first series. Almost soft. What I would call "Old Gray Iron".

(Continued on Page 62)

The Melting Pot

(Continued from Page 61)

I know that you have done a lot of Wagner research, lately. I own a Beer bottle with the following markings: The John Wagner Sons Brewing Co., Sidney Ohio. It is dark brown in color, approximately 9 1/2" high. Any relationship to the Wagner Mfg. Co.? Any idea from when to when they were in business? Any idea of the value?

And finally, I noticed in an issue of *KnC* that you valued a N. Waterman #9 at about \$45. Any idea of the worth of a #3, patent date April 5th 1859? Also, any idea when N. Waterman pans were no longer made? JB

JB: Thanks for your feedback about the Erie Skillet. There has been some debate on whether the Erie Skillets with the gate marks are legitimate. Probably some were. But, I also believe that copies were made of early skillets by early foundry men. These copies would have gate marks because the small foundries would not have had the technology to use the in gate method, primarily because they would not have had the ability to design the pattern. They used skillets as patterns. it makes for good discussion and debate.

For many, many years the Wagner family was Sidney. They owned the bank, a department store, a Hotel, a Realty Company, an Auto dealership, and yes a Brewery. There is little said or written about the brewery, but when I was in Sidney I recall it being mentioned that the brewery fell with Prohibition.

*The interest seems to be picking up on Waterman pans. I believe the #3 is one of the better ones so I would value it at about \$65. There will be a Waterman chapter in The Book 2. I am also planning a Waterman article in an upcoming issue of *KnC*. -ed.*

Dave: We bought a Dutch oven w/lid a couple of weeks ago at our local flea market-Kane county. The Dutch oven has a smoke ring, and is a nice casting. The lid is different and is an exceptionally nice casting, and has a different design under the top. The lid fits the Dutch oven perfectly. Can you use the photo of the lid in *KnC*? Maybe we can get some idea as to who made this. Thank you. -AC



AC: Isn't this an interesting piece! I have no idea who the maker is. I hope we get some feedback on this one!! - Dave

Mr. Smith: I am a recent subscriber to your newsletter and was pleasantly surprised to receive all of the back issues for this year. It was like Christmas! I hope you don't mind, but I have a couple of questions. First of all, What is the difference between a smoke ring and a heat ring or are they the same thing? And secondly, I purchased a diamond marked "Griswolds Erie" griddle with a bail, which is marked No.12 on it. I tried to look it up in your book, but only found the griddles with handles. I have a sinking feeling that I paid too much for it - \$90. It is in pretty good shape and the dealer said that it was in your book for \$130, and I hadn't seen the diamond mark before so I thought it was something special. Now I am worried. Can you put my mind at ease or am I one of the people who should carry your book around with me like a Bible? -L

L: A Heat Ring and a Smoke Ring are the same thing. There has been an ongoing debate on which is the correct terminology. From my research, I believe the ring on the bottom of the early skillets, that were used on the very smooth top of the wood or coal kitchen stove is indeed a Heat Ring. An early Wagner Ware catalog states that their skillets have a ring that raises the bottom of the skillet above the cooking surface for more even heat distribution. The Lodge Mfg. company put little indentations in their rings to allow the heat to circulate under the skillet. I could go on but I won't.

We goofed when we did not include the Diamond Logo Bail Griddles in The Book. The #12 Bail Griddle is the most common size in bail griddles. Even then, the Diamond Logo is worth between \$75 and \$100 so you did all right. -ed.

Dave: I have this broiler but it is not marked. Is the maker
(Continued on Page 63)

The Melting Pot

(Continued from Page 52)

unknown? DS



DS: Your broiler was made by the Lodge Mfg. Co. of South Pittsburg, Tn. I have one of these and it is one of my favorites. -ed.

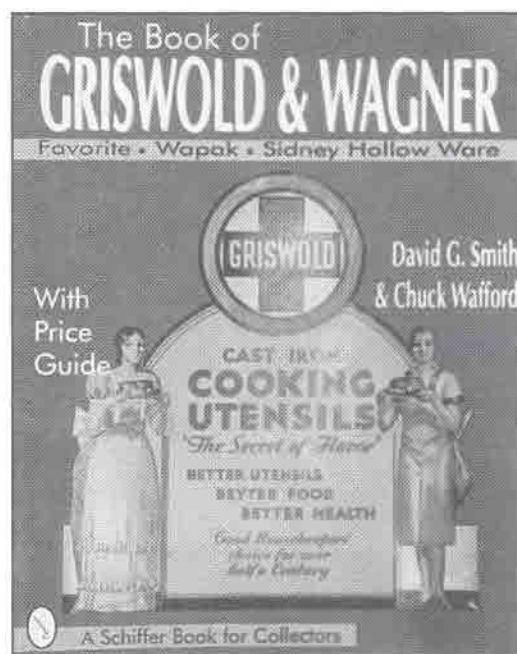
Dear Dave: I have two skillets #8 size. The first one only has the letters "S," "G" on the bottom side of the handle up next to the wall of the skillet. The handle is ribbed underneath and the skillet has an outside fire ring. Could this be a skillet made by the Selden & Griswold Mfg Co? The second skillet has the marks 87X B on the bottom. The thing that makes this skillet interesting is that it is hammered around the outside of the wall. Are hammered

skillets rare and to they have any value? -PD

PD: I doubt very much that your skillet with the letters under the handle are Seldon Griswold. I have a #9 size (not marked #9) skillet with the letters 'A' 'E' under the handle in the same position as yours. I feel it may be Lodge because Lodge did use raised letters in their marking. Your second skillet is Lodge. These markings are common and the hammered finish on this skillet is typical. These are fairly common and have little collector value at this time. Value will probably pickup in the future. -ed.

The Book...

if your favorite collector doesn't have a copy yet, now's the time for Christmas gifting!



\$32.95

post paid



Make checks payable to:

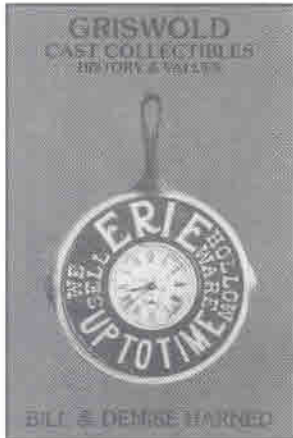
**The Pan Man
P.O. Box 247
Perrysburg, NY 14129**



Holiday Giving Ideas for Your Favorite Collectors!

BOOKS

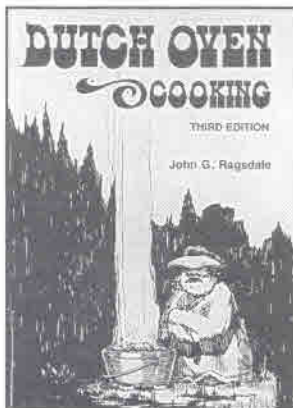
(Don't forget THE BOOK -
See Page 63)



Griswold Cast Collectibles - Harned

This is the book that started it all! Contains photos, recipes, list of patents, illustrations of various logos and lots more not included in other references. This book is out of print so don't wait to acquire this valuable reference.

\$15.00 post paid



Dutch Oven Cooking - Ragsdale

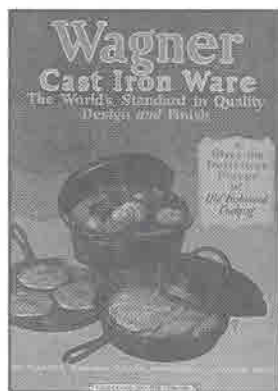
5 1/2 x 8", 70 pgs. A great little book for the beginner to expert. It's packed with dozens of simple recipes - the official Boy Scout Dutch oven cookbook.

\$5.95 post paid

Wagner - Catalog No. 58 Reprint c.1931

8" x 10", 24 pgs. with full color cover. Contains clear, sharp pics of Wagner's line in that period, including skillets, griddles, roasters, muffin pans, kettles, toys, waffle irons, cake molds, sandwich toaster, sad iron heaters, etc.

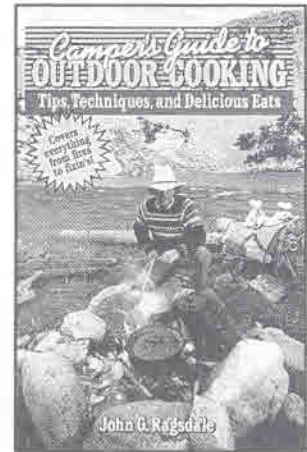
\$20.00 post paid



Camper's Guide to Outdoor Cooking - Ragsdale

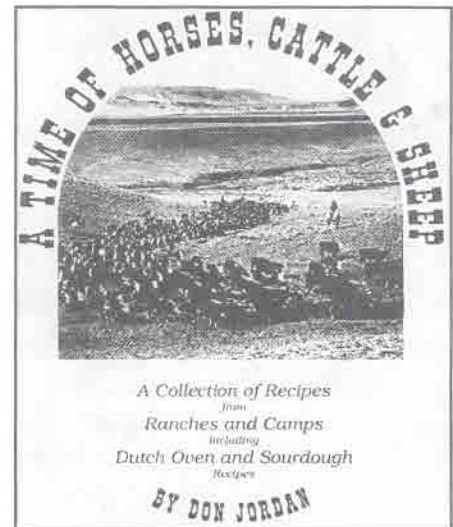
5 1/2 x 8", 170 pgs. This book covers everything from selecting wood for the fire to preparing desserts. It advised on meal planning and cooking tips. This is an excellent book for the camper.

\$9.95 post paid



A Time of Horses, Sheep & Cattle - Jordan

This book contains a collection of recipes from ranches and camps, including Dutch oven and sourdough recipes inter-



laced with history and humorous stories with a glimpse of how life was in Eastern Oregon on cow and sheep ranches and in hunting camps during the depression years of WWII. You will read this book from cover to cover. Only three copies left in inventory!

\$15.50 post paid

Gift Subscriptions to Kettles 'n' Cookware

(Just \$20.00 ~ We issue Gift Certificates)



**MORE CATALOG REPRINTS &
ORDERING INFO ON NEXT PAGE!**



**MORE
CATALOG
REPRINTS!**

**NO
LONGER
AVAILABLE**

**Griswold -
1890-91
Catalog
Reprint c.
1890**

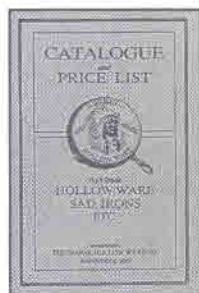
6" x 9", 77 pgs. A
great reference of
Griswold's early
products.

\$20.00 post paid

**Griswold -
Catalog No.
45 Reprint
c.1910**

6" x 9", 138 pgs.
This is a great
reprint with
photo sharp artist
drawings.

\$25.00 post paid



**Wapak -
Catalog
Reprint c.1912**

Excellent reference
of products of the
Wapak Holloware
Co. Includes skillets,
griddles, kettles,
waffle irons, gem pans and sad irons.
Also illustrated are hardware items
such as lawn furniture, urns, hitching
weights, etc.

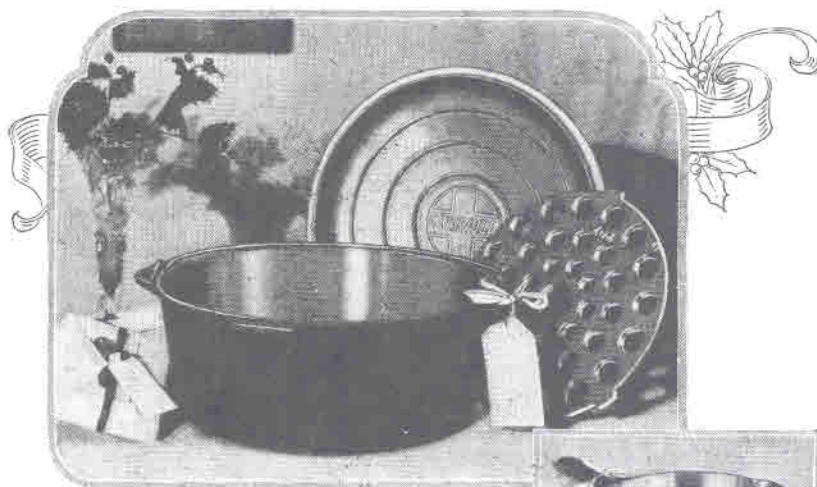
\$15.00 post paid

Please make checks payable to:

The Pan Man

P.O. Box 247
Perrysburg, NY 14129

**GRISWOLD kitchen utensils
live through many holiday seasons**



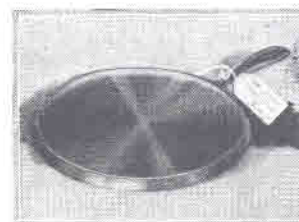
*Griswold
Tite-Top Dutch Oven*



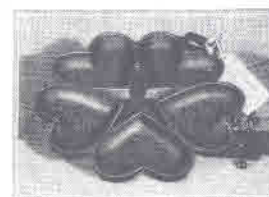
Reg. U. S. Pat. Off.



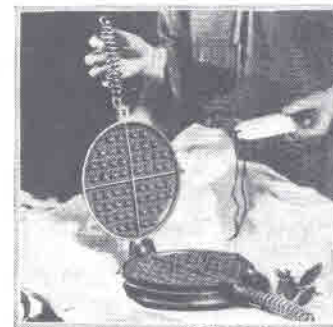
Griswold Cast Iron Skillet



Griswold Griddle



*Griswold
Heart-Star Gem Pan*



*Griswold Standard Waffle Iron
Also made in Heart-Star Design*

YOU'RE really building for
the future when you select
Griswold cast iron utensils for
your kitchen. It's wonderful how,
instead of wearing out, they be-
come more useful and more thor-
oughly indispensable every year.

Griswold cast iron utensils en-
dear themselves to their owners
because they make it easy to cook
tempting things to eat and because
they need not be replaced.

That is why your friends are
delighted to receive Griswold
utensils for Christmas—if you look
over your list carefully, you are
sure to find several names at least
for whom one of these articles will
be just the most welcome and ap-
propriate gift.

If your local dealer cannot
supply you, we shall be glad to see
that you get what you want.

THE GRISWOLD MFG. CO.
Dept. R-1, ERIE, PENNA., U. S. A.

*Makers of the Bolo Oven, Extra Finished Iron Kitchen Ware, Waffle Irons, Cast
Aluminum Cooking Utensils, Food Choppers, Reversible Dampers and Gas Hot Plates.*

1922 GOOD HOUSEKEEPING AD

In using advertisements see page 6

193



Casting Call



The "Dolly's Favorite" made by Favorite Stove & Range Company, Piqua, Ohio, about 1915-1926. The original sold for \$15-\$17 back then. Note beautiful craftsmanship with utensils in photo. This model in black steel has "swing tea stand" on left top and "drying towel bar" on right. This stove was also made in gray porcelain, blue porcelain & black Lustro Enamel and now sells for the range of about \$3000 - \$7500, complete of course. Its dimensions are 19" long, 11" wide and 25" tall. This is one of the few large stoves that have been reproduced (very crude finish, poor copy of the original). I just finished restoring & polishing. From the collection of Carl Rauch, which will be at the 1999 Griswold meet. **If you have a piece you would like to have in Casting Call, submit a clear photo with a brief description.**

Kettles 'n Cookware is published bimonthly, six issues per volume.

COPYRIGHT 1998-All Rights Reserved. No part of this work may be reproduced without written permission from the publisher.

Subscription: \$20 per volume, including all prior issues of the volume, regardless of when you subscribe.

Checks payable to: Kettles 'n Cookware

Mail all correspondence to:

David G. Smith, Publisher
P.O. Box 247
Perrysburg, N.Y. 14129



Happy Holidays!

It has been our privilege to share our love of cast iron cookware collecting with all of you. During this holiday season, we wish you all

Happy Collecting and the warmth of friends and family around you.

David & Catherine Smith

The KnC Iron Net

(E-mail addresses-New listings in bold)

David G. Smith

panman@utec.net or
DGSpanman@aol.com

Don Arner

donarner@biosensors.net

Dick Barnes

rbarnes@endor.com

Patrick Bedwell

mrpotatohead@earthlink.net

Dave Bollinger

PSEQ54B@prodigy.com

Grady H. Britt, JR.

ghbjr@vnet.net

Gene Corral

gecorral@jps.net

Josh Delp

Jdelp@aol.com

Ron Ewing

rewing@pacificrim.net

Dean Fitzwater

Ftzh20@aol.com

Gary Franzen

gdfranzen@juno.com

Robert Grossman

RGross1831@aol.com

Jon Haussler

Jhaus23985

James Kushlan

james.kushlan@med.ge.com

Darvin King

cicowboy@camalott.com

Leonard Lange

ClassColl@aol.com

Diana Lynn

livingst@norwich.net

Scott Lamb

SLAMB@keyfin.com

Rosalie Lovelace

Rlovelace@usa.net

Herschel Mack

hlm2@axe.humboldt.edu

Robert Maxwell

onewaffle1@inct.net

Tom Moran

TJMjunkman@aol.com

Joe Noto

DrJoNo@aol.com

Ski & CJ Pratt

cidutch@wave.net

David Pierce

davidp@mt-vernon.com

Walter Rittenhouse

walter@rittenhouse.net

Mike Rossignol

Mikesantiques@juno.com

Steven R. Russell

Canexpl@aol.com

Marvin Scattergood

VEDG33B@prodigy.com

Suzanne Schwarting

sschwart@cce.cornell.edu

Tom Sheley

wbuwvohio@aol.com

Philip Sirota

plshilo@atlantic.net

Lamar Smith

pblamar@linknet.net

Greg Stahl

gstahl@zeus.bwh.harvard.edu

Bernie VerHey

GRISLI@aol.com

Eric Wehmeyere

wehmeye@ix.netcom.com

Lou & Nancy Wright

ecoacres@msn.com

Patricia Young

GRISANA@aol.com

If you would like your name and e-mail address listed, send it to KnC!