

KETTLES 'n COOKWARE®

NOW IN ITS 9TH YEAR OF PUBLICATION



N. WATERMAN - BOSTON

by D.G. Smith

Without question, at least in the northeast, the most commonly found muffin/gem pans are those marked N. WATERMAN or R&E MFG. Co. The fact is Nathaniel Waterman was the person who established the standard

and most popular designs for what he called "Roll Pans."

Nathaniel Waterman was born in 1822; he died in 1894. The 1857 Boston, Massachusetts Directory lists Nathaniel Waterman as a Tin Ware Manufacturer. In fact,

(Continued on Page 49)

From The Editor

Controversy continues to plague the G&CICA as the hierarchy try to cover their tracks and retaliate against members who dare question their authority in deciding what is best for the membership.

Since the convention, Joannie Baldini (a founding member) has been fired as the Ethics Committee Chairman without even the courtesy of notifying her. She discovered it when she visited the association web site. She has also been told that she will no longer be recording the minutes of the meetings, a duty specified by the Constitution & Bylaws. The president is going to appoint someone else to record the minutes. Speaking about minutes, it has been five months since the convention, and the minutes have yet to be published. Well, that may not be totally correct. The membership meeting minutes were taken, and videotaped. Neither have been provided to the association secretary even after several requests from her. (Joannie was ill and could not attend the convention so an acting secretary was appointed to record the minutes). Instead, the president's version of the minutes were forwarded to Joe Noto, editor of the association newsletter for further editing. This version of the minutes was edited to the point of changing facts, eg. naming Tom Beadleston as the maker of the motion to table a motion by John Weight regarding amending the constitution which would have ultimately led to the mail ballot. The fact is that everyone there knows that Joe Noto made that motion. This is just another classic example how members are being deceived by things being manipulated by the hierarchy. These minutes(?) were posted on the G&CICA web page but were recently removed after a couple of board members (not in the fold) protested that the minutes were not accurate and had not been approved by the board or membership. Altering the minutes is not new to this organization. Last year the minutes were changed to remove the president's abrupt answer to a member's question, "Don't members have the right to vote on expenditures or investments?" The president's answer was a flat, "No; the board decides." The secretary was instructed by the president to remove that answer because "it might create problems later on."

Another issue is the reproductions in the association auction at the convention. The Auction Committee has always declared that they have autonomy to run the auctions and basically, for everyone else to mind their own business! Yet when the turmoil over repros being sold through the auction hit the fan, they looked for someone else to blame. The way I see it, when they demand autonomy, they accept full responsibility for the auction. They clearly dropped the ball on this one. However, blame was put on Larry Foxx and John Wright for not alerting the Auction Committee of the reproductions. No mention was made that a member of the Auction Committee was on the Reproduction Committee. Also, no mention was made that Larry had several reproductions removed from the Swap Meet. Larry (the G&CICA founding president) was

subsequently dumped as Reproduction Committee Chairman and John Wright was dumped from the Archives Committee of which he was Chairman. I might add, I just learned from my visit to the association web page that I have been removed from the Library Committee and the Archives Committee without even the courtesy of being notified. I also noticed that Larry Foxx is still listed as Reproduction Committee Chairman even though he was replaced per a memo from the president dated July 25th. More games!

Reproductions in the auction has also exposed another issue. Many of the pieces were from non-members, inserted into the auction by a member of the Auction Committee. Apparently even non-members can now consign pieces to the auction if you have the right connections.

Another classic issue is when the board meeting at the convention was shut down immediately when a motion was made and seconded to censure Joe Noto for his unacceptable bias behavior, having ethical implications, as the Nominating Committee Chairman and newsletter editor prior to the elections. The president immediately declared the meeting over and stormed out of the meeting room. Both the maker of the motion and the second have been removed as committee chairs. And...because the accusations against the Nominating Chair and Editor are still in the air, the president protected him by appointing him to the Ethics Committee. Can you top that? Read on.



The president abruptly ending the meeting with a motion and a second on the floor, with old business and new business still pending, and without a motion to adjourn, is in multiple violations of Roberts Rules. Article XVI of the G&CICA constitution states "Roberts Rules shall govern the proceedings of the association.." However when this issue was again recently raised, the newly elected Vice President's response, dated 8/13/00, was, "Rules, (including Roberts) are made as guidelines, to be followed and broken. Common sense must prevail." Can't you just imagine this in a court: "Your Honor, I know the law, but it didn't seem to make common sense to me, so I broke it." And now, the vice president has been appointed Chairman of the new Constitution & Bylaws Committee. His task should be easy. The Constitution & Bylaws need only one article: Article I - Rules are made to be followed and broken...common sense must prevail.

What a shame that the ideals and efforts of the six founding members nearly ten years ago have been literally destroyed by those motivated by ego and control. And it used to be so much fun.

Keep the faith.

- Dave ☹

MOVING?

 Send your change of address to: 

Kettles 'n Cookware

P.O. Box 247, Perrysburg, NY 14129

N. Waterman - Boston (Continued from Front Cover)

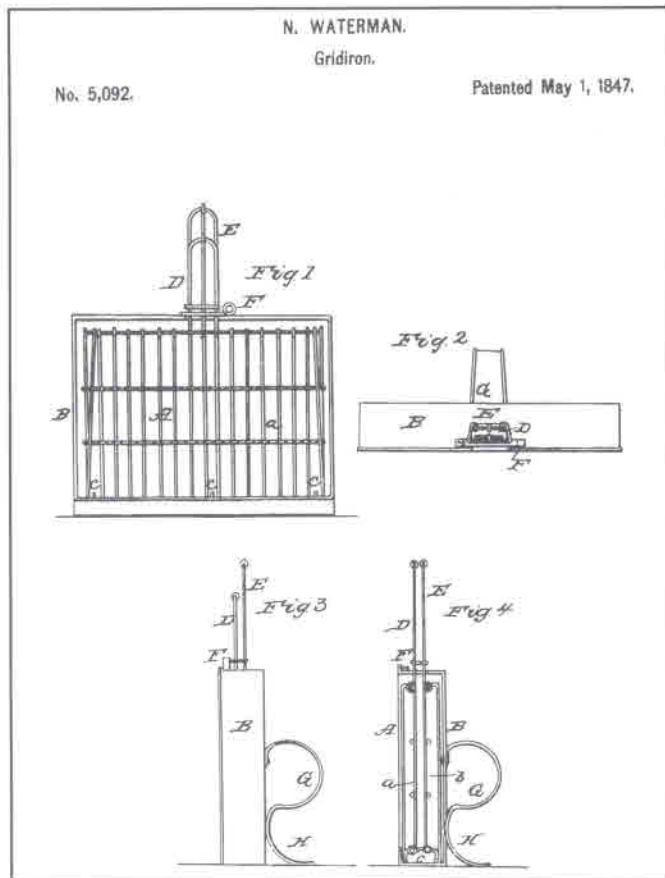


Figure 1

in 1847 he patented a Gridiron for broiling "steak or any other article to be cooked" which combined a wire frame to hold the meat and a tin trough "to receive and hold the gravy or fat" (**Fig. 1**). A 1859 directory refers to the Nathaniel Waterman & Company. By 1860, the listing was changed to Nathaniel Waterman & Company Household Furnishing Goods. By 1862, the listing had changed to Nathaniel Waterman & Company - Household Furnishing Articles. The point is that no listing indicated that Nathaniel Waterman was a manufacturer. Nathaniel Waterman began as a tin smith, an inventor, and a household furnishing jobber or wholesaler. So what about muffin pans marked N. Waterman - Boston?

August 17, 1858, Nathaniel Waterman patented his "Roll Pans." The original patent illustrated a three section, elliptical shape (**fig. 2**). This elliptical-shaped pan bears that patent date. In addition to the elliptical shape we know of three other shapes that were manufactured: oval, round, and rectangular (**fig. 3 a & fig. 3 b**). These pans however bear the patent date of August 31, 1858. Are there others? I just noticed the difference in the patent dates while I was working on this article. Perhaps when I locate the August 31 patent I can answer that question. In 1859, Nathaniel patented an "improved design." This design had openings between the cups which allowed better circulation between the cups for more even heat distribution. The original design was what we now

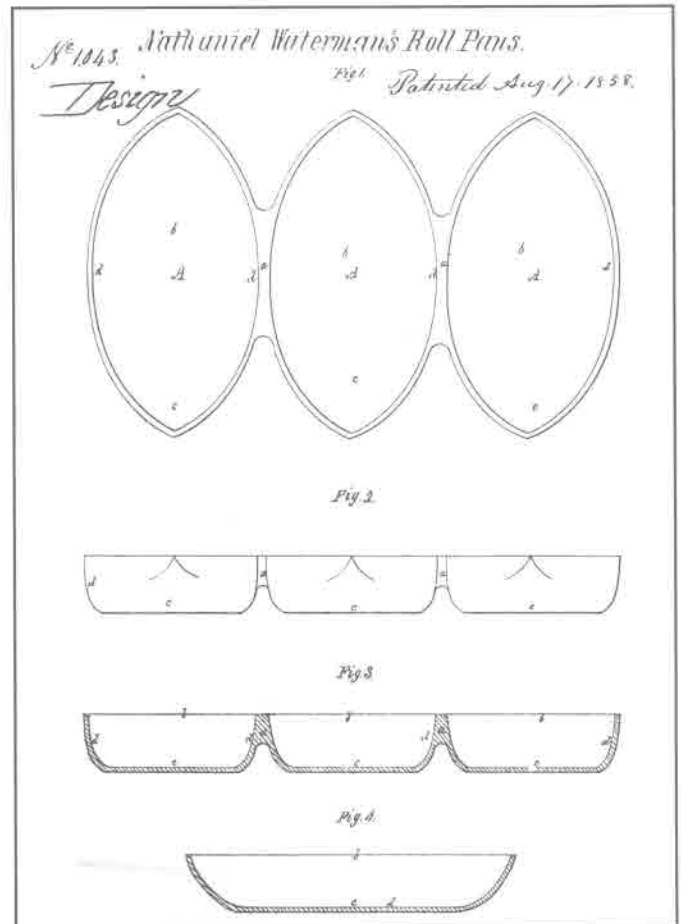


Figure 2

identify as the No. 3 Roll/Gem/Muffin pan (**fig. 4 & 7**), whatever you prefer to call them. It was from this patent that a total of eleven designs or styles evolved.

Now let's consider their manufacture. These first Muffin or Gem pans (gems were a batter biscuit) were done in eleven styles, No. 1 through No. 11. They all can be found marked either N. WATERMAN, or R&E MFG. Co. Their markings are identical in style and also identical in quality (or lack of). The markings on Waterman and R&E pans are often very poorly done. The R&E Mfg. Co was the Russell & Erwin Mfg. Company of New Britain, Connecticut. They were manufacturers. Considering the facts that Waterman & Company were housewares distributors, not manufacturers, and the near identical casting quality of the Waterman marked pans and the R&E marked pans, it is highly probable that the Russell & Erwin Company manufactured the N. Waterman marked pans for distribution by Nathaniel Waterman through his household furnishing business. It is also probable that the R&E Mfg. pieces were "licensed" by Waterman to be distributed through other outlets. There are at least two known facts that support this.

There is a waffle iron marked Waterman that is identical to one marked New England Butt Company. It is easy to conclude that Waterman had the waffle irons made for his business distribution, similar to Griswold making pieces for Alfred Andresen of the Western (Continued on Page 50)

(Continued from Page 49)

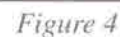


Importing Company. Also, there is a series of gem pans, with a different style handle, marketed by Simmons Hardware (fig. 16 & 17). These muffin pan styles were most likely licensed to Simmons Hardware by Waterman.

There is also a set of R&E Mfg. Co. quality but are unmarked except for a number on a raised plate on the piece (fig. 7 & 15). Who made these? The question is open.

Waterman designs certainly set the standard for the industry. Major manufacturers such as Griswold and Wagner followed suit with identical designs and number designations with few exceptions. Griswold followed the

(Continued on Page 51)



N. Waterman - Boston

(Continued from Page 50)

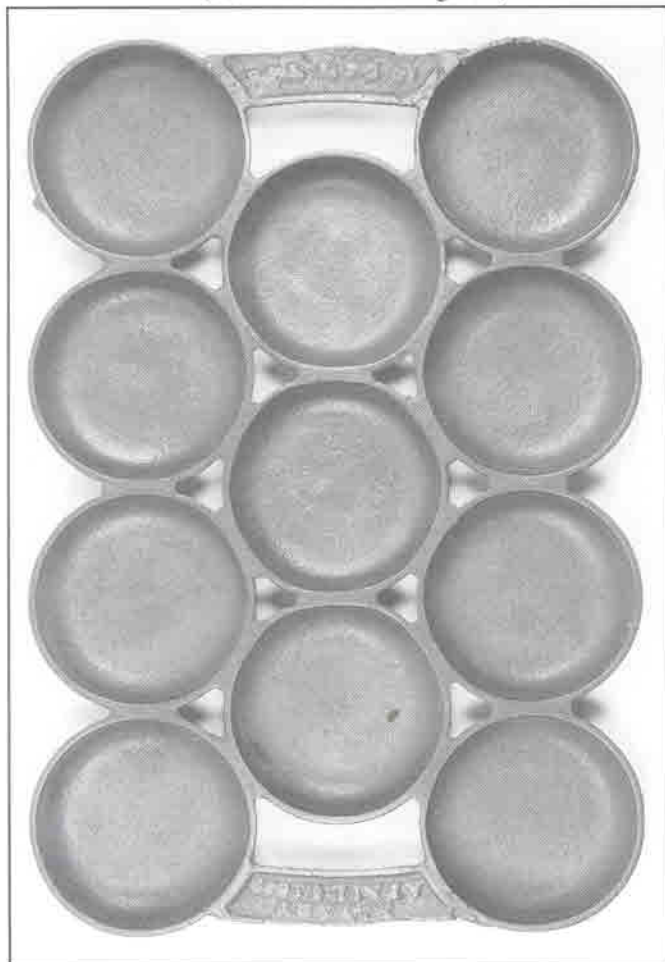


Fig. 6 - #2 R & E Mfg. Markings are typically unclear.

Waterman designs completely except for the No. 4 and No. 8. Wagner, in addition to the number, also used a letter designation. Other companies produced the Waterman styles but with some variation in numbering. Only the Excelsior Mfg. Company who produced gem pans marked G.F. Filley totally abandoned the Waterman styles in favor of their own creations. However, even they broke their line with the No. 5 (fig. 18) which is the Waterman style.

There are several other unmarked Waterman styles found which remain unidentified as to their maker. One exception to that statement however are the pans produced by The Foundry Products Company of Pendleton, Indiana. Their pans can be identified by the rectangular channel in the handle (fig. 19). Other variations by different makers are also illustrated (fig. 20 & 21). If anyone can identify these unknown makers please contact *Kettles 'n Cookware* so the information can be passed along.

(Photos continue on Page 53)

Happy Hunting, Collectors!

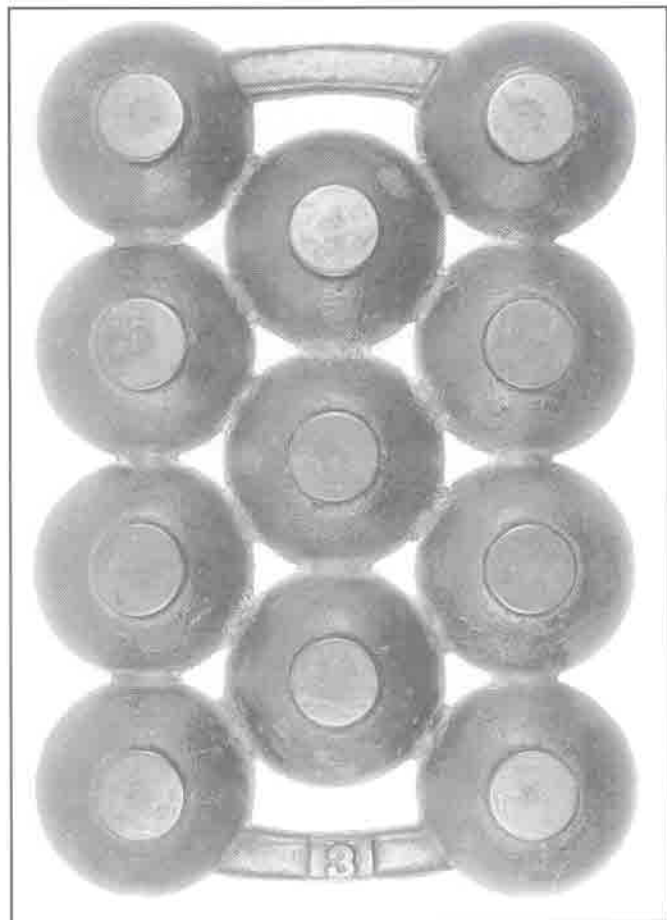


Fig. 7 - #3 Waterman style is from a series of Waterman styles marked only with a number on a raised plate. Who made these?



*The
Melting
Pot*

Hi Dave: A dealer friend of mine has been offered a piece of Griswold that we are having a hard time identifying and establishing a value for. I have not see it, but it is described as follows: Small round chrome pot with lid, the pattern number is 61. The lid is polished chrome with a flat flared handle instead of a round knob. The handles on either end of the pot are flat. The sides of the pot are brushed chrome. He did not describe in any better detail what the markings are on the bottom other than it was a right looking logo. He said it looks just like the Oval Casserole you have shown on page 146 of *The Book* but it is round. So we are trying to figure out what is it and what is the fair value of it? Thanks -LG

LG: Although we have additional casseroles/servers in the new book, the one you describe is not included. I also checked a hotel and restaurant catalog. Although it lists

(Continued on Page 52)



The Swap Shop

KEY:

p/n	=	pattern number
w/	=	with
SR	=	Smoke Ring
HR	=	Heat Ring
ISHR	=	Inside Heat Ring
TM	=	Trade Mark
btm	=	bottom
EPU	=	Erie, Pa. USA
var	=	variation
emb	=	emblem
mkd	=	marked

GRISWOLD FOR SALE: #31 Rimless p/n 963 Danish Cake Pan \$150; Set of Chef Skillets p/n's 2703-2705-2708 3 for \$225; Large logo handled Griddle Set #6-10 p/n 606-610 \$375; Selden Griswold #8 French Waffle Iron with Snow flake interior pattern \$950; Carbon Bucki Pup, mint chrome \$35; Alfred Andresen Crisscross Goro Wafer Iron \$150; #7 Slant/ERIE 3-Legged kettle \$80; #11 Low Base Waffle iron \$160; #11 Hi Base Waffle Iron \$100; Advertising Ashtray Ovens/Ranges/Griddles, etc. \$65; #67 Red Casserole & Lid \$55; #83 Red Cereal Bowl \$40; #108 Skillet Griddle \$55; #3 Chrome Low Smooth Lid & Skillet \$250; Miniature Decorative Trivets \$35 ea.; A410 Miniature Alum Sauce Pot \$250; #130 Oval Fish Skillet (chrome) near mint \$300; #32 Windproof Ashtray with Grate \$75; "00" Square Waffle iron \$375. **WAGNER & MISC:** #10 Dutch Oven Ringed top Lid \$100; #1402 Double Hinged Chicken Fryer \$75; Cheese Slicer p/n 300 \$75; #13 Skillet c/n 1063 \$475; Portland Stoves Black Porcelain Ashtray \$50; Supermade '0' Waffle Iron & Lipped kettle \$250; #9 Aluminum Cover \$30. Call Dave at (814) 899-7926

CLASSIFIED ADS ARE FREE UP TO 100 WORDS

GRISWOLD FOR SALE: Griswold Santa Mold, Excellent Condition with Tongue and Casting line in Toy Sack, \$535; Griswold No. 31, fully marked Variation 4, Excellent Condition, \$175; Griswold "O" Skillet Red and Cream Porcelain, Exc, \$45; Griswold No. 17 French Roll Var. #6, Exc, \$130; Griswold No. 28 Wheat Pan, Var. 1, \$235; Griswold/Skinner Marked Odorless Skillet, \$200; Griswold No. 6 Muffin Var. #2, \$85. **WAGNER FOR SALE:** WW Little Gem Muffin Pan 12 Cup Open Frame, ALUMINUM, \$110; WW No. 11 Skillet and Raised Letter Lid \$225. **WANTED ITEMS:** Atlantic Bread Pans; Barstow Stove Bread Pans; 6 Cup Cloverleaf Donut Mold; Waffle Irons with Unusual Patterns inside; Waterman 3

Cup Muffin Pans; Waterman Waffle Irons; Tilter Tea Kettles. Prices do not include shipping. Robert Karle, 344 RT.147, Middlefield, CT 06455. Phone 860-349-1212. Best Time 8-9 PM Eastern Time. Email: bkarle@prodigy.net

GRISWOLD FOR SALE: No. 5 Oval Roaster, full writing cover, \$275; No. 11 Skillet, block EPU \$175; #4 Skillet block EPU \$65; #2 Skillet block EPU \$375; #8 Iron Mountain Dutch Oven \$45; No. 5 Erie Scotch Bowl with early kettle ears \$65. **WAGNER:** Double Skillet, ringed top \$85; 5-Star Skillet Set \$75; #7 Skillet OSR with A at 3 o'clock position \$25; #9 Drip Drop Skillet cover, raised letter, \$65; #7 Skillet, smooth btm w/4 digit p/n \$45, Same in nickel \$30; #9 Skillet, smooth btm w/4 digit p/n \$65. Prices do not include shipping. Dave Smith, P.O. Box 247, Perrysburg, NY 14129 (716) 532-5154 Email: panman@utec.net

DEADLINE FOR NEXT ISSUE

November 12th

The Melting Pot

(Continued from Page 51)

No. 's 63, 64, & 65, it lists no No. 61. All these pieces have the flat, solid handle on the cover with tab handles on the bottom. I don't know what to tell you. -ed

Mr. David: The Griswold gas burner stoves. I have seen models numbered in the 200's, 300's, 400's, 500's, 700's 30's and 60's. Do these just designate different styles? Does the model series indicate size, quality, age differences? -BC

BC: The numbers on the Griswold stoves indicate model and size. A 201, for example is a single burner, a 202 a double, and 203 a triple. It is also interesting to note that there was a 200 Erie series and a 200 Griswold series. They are quite different styles, the Erie quite fancy, the Griswold being very basic. Most of the Erie and Griswold stoves are illustrated in the Griswold Catalog No. 45 and the 1940-42 reprint, both available from me or Larry Foxx. -ed.

Hi Dave: I have a number of the porcelain skillets red/cream, yellow/cream, etc. Question is, can I safely put them in the lye to remove the buildup of grease, etc? Thanks! -JK

JK: Do NOT put porcelain pieces in lye. The lye will eat the finish right off. For some reason, the lye or oven (Continued on Page 60)

N. Waterman - Boston

(Photos continued from Page 51)

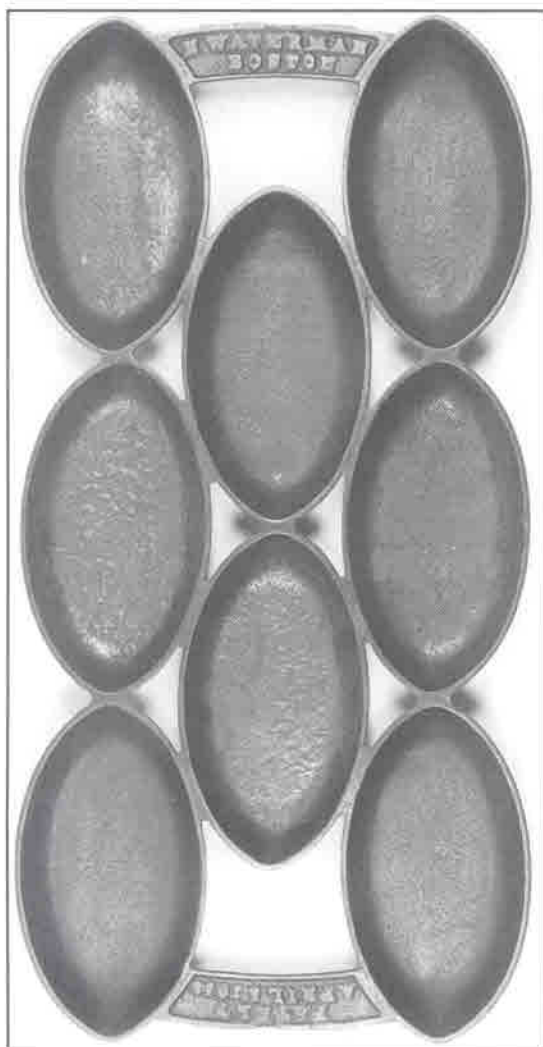


Figure 8 - No. 4 Waterman Roll Pan

(Feature story photos
continued on Page 54)

Figure 9 - No. 5
R & E Roll Pan

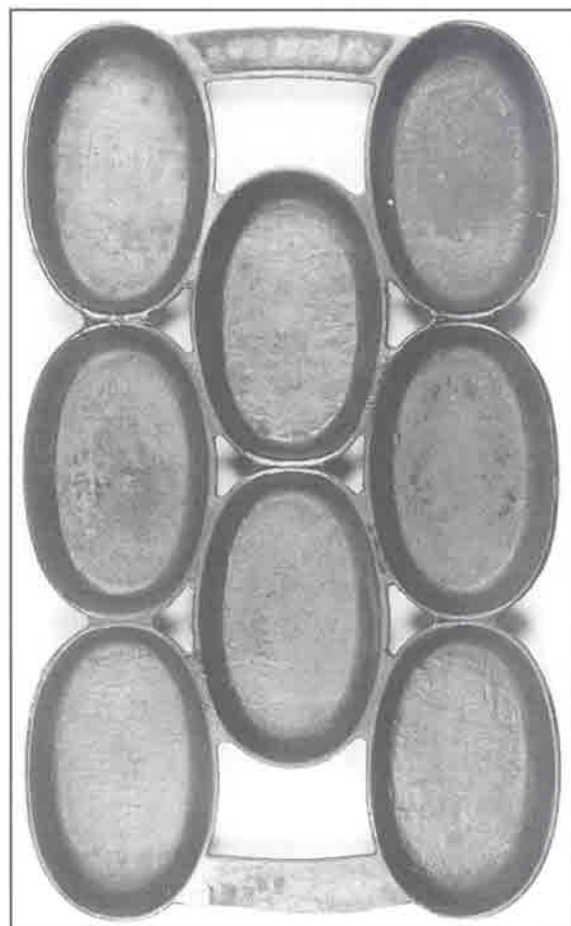


Figure 10 -
No. 6 R & E
Roll Pan



Back Issues of KnC
(Vol. 1-8) provide 490 PAGES
of reference & information
...and make a welcome gift
for the cast iron cookware collector!

All Volumes ~ 1-8 ~ \$15 ea.

Kettles 'n Cookware
P.O. Box 247, Perrysburg, NY 14129

N. Waterman - Boston

(Continued from Page 53)



Figure 12 - No. 8
R & E Roll Pan



Figure 11 - No. 7
N. Waterman Roll
Pan

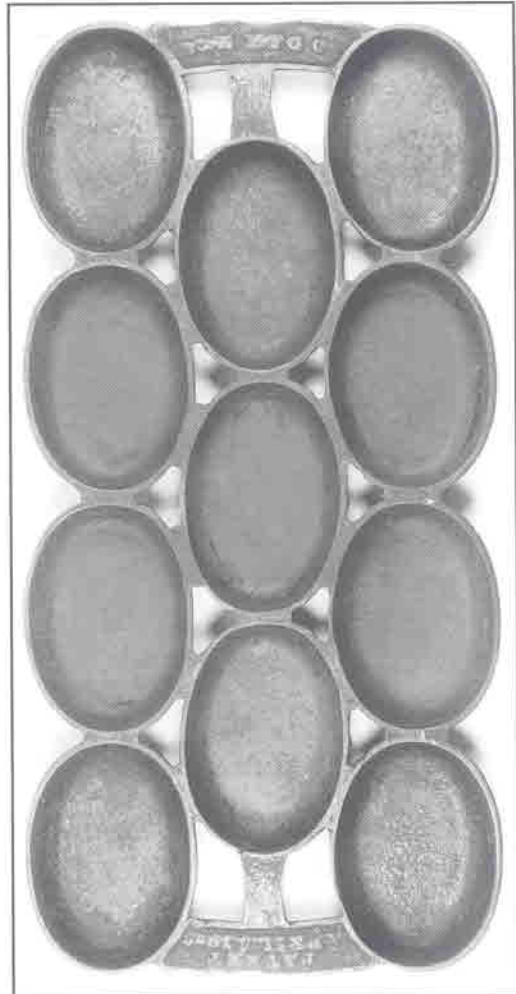
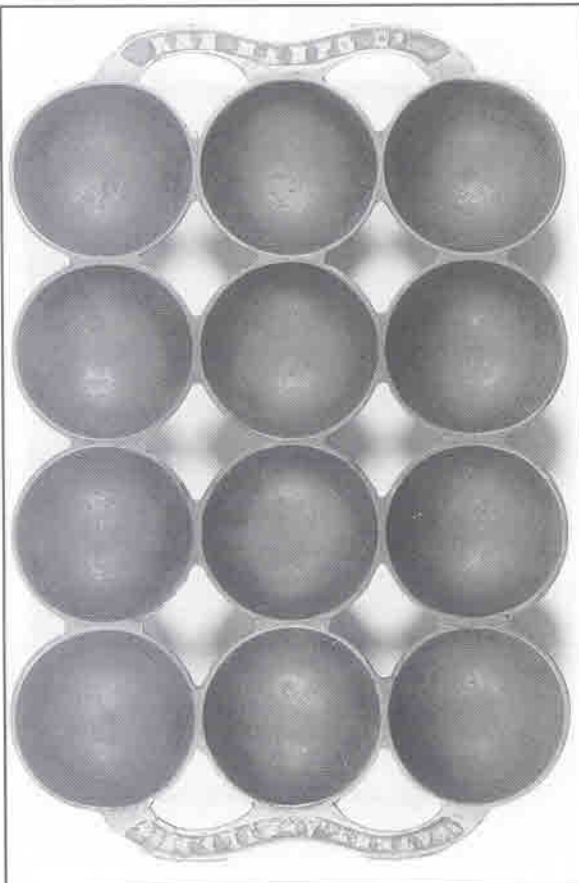


Figure 13 - No. 9
R & E Roll Pan



(Feature story photos
continued on Page 56)



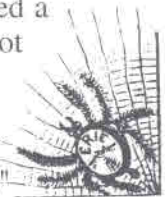
To ponder over morning coffee...

Why is it that if someone tells you that there are billions of stars in the universe you believe them, but if they tell you a wall has wet paint you have to touch it to be sure?

Do Roman paramedics refer to IVs as "4s"?

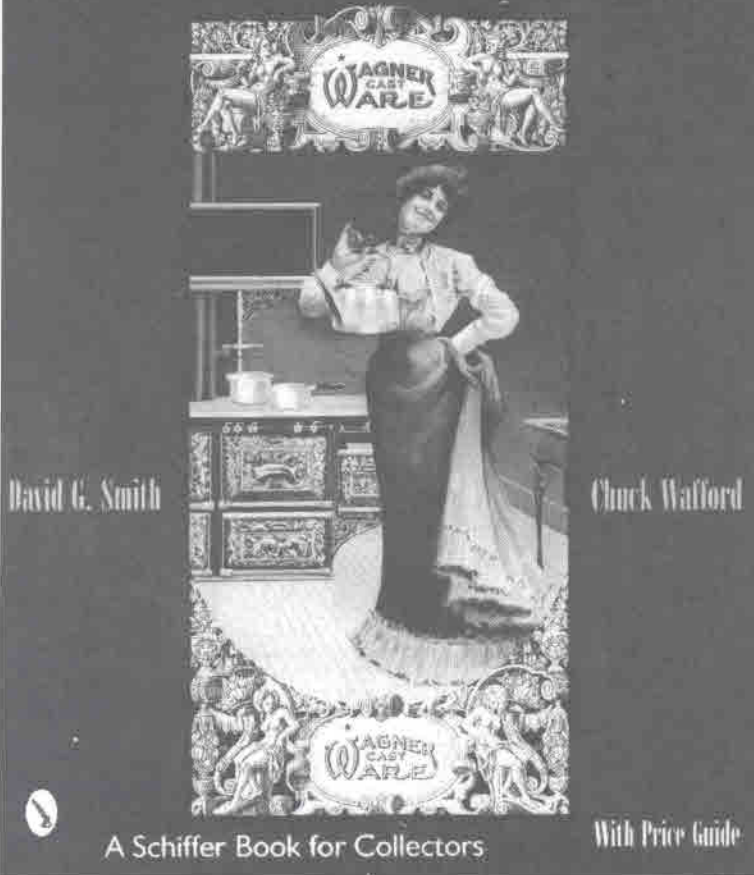
Why is a person who plays the piano called a pianist, but a person who drives a race car not called a racist?

If people from Poland are called "Poles," why aren't people from Holland called "Holes?"



THE BOOK OF WAGNER & GRISWOLD

MARTIN • LODGE • VOLLRATH • EXCELSIOR



The Book of Wagner & Griswold

The new *Book of Wagner & Griswold* is finally becoming a reality. This book continues from where the first book left off. There is NO duplication with the exception of the skillet logo charts, and the pattern number charts which have been expanded and better organized.

The Book of Wagner & Griswold is 256 pages (16 pages in color) of brand new material clearly illustrated by 845 photos including 225 pieces of Griswold and 350 pieces of Wagner, not in Book One. Also included are chapters on Martin Stove, Lodge, Vollrath, and Excelsior Mfg. Co. (G.F. Filley). The format of this new book is basically the same as Book One; therefore, will seem very familiar to use.

The Book of Wagner & Griswold will be available by November 15th. You can pre-order now from the authors and you will be the first to own this new, exciting reference. **This book will not be available from any other source for 60 days (until mid-January).**

Send payment of \$32.95

(\$29.95 + \$3 shipping) to:

David G. Smith

P.O. Box 247, Perrysburg, NY 14129

N. Waterman - Boston

(Continued from Page 55)



Figure 14 - No. 1- R & E Roll Pan



Figure 15 - No. 11 Waterman style with raised number



Figure 16 - No. 7 marked N. Waterman. Note different style handle



(Feature photos continued on Page 57)

N. Waterman - Boston

(Continued from Page 56)

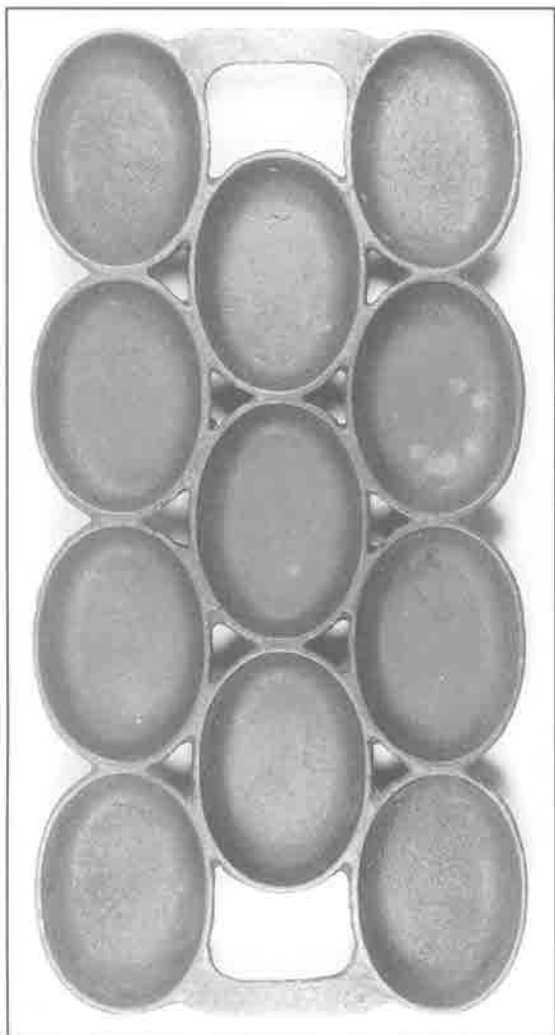


Figure 17 - No. 8 "Baking Pan" marked by E.C. Simmons Co.

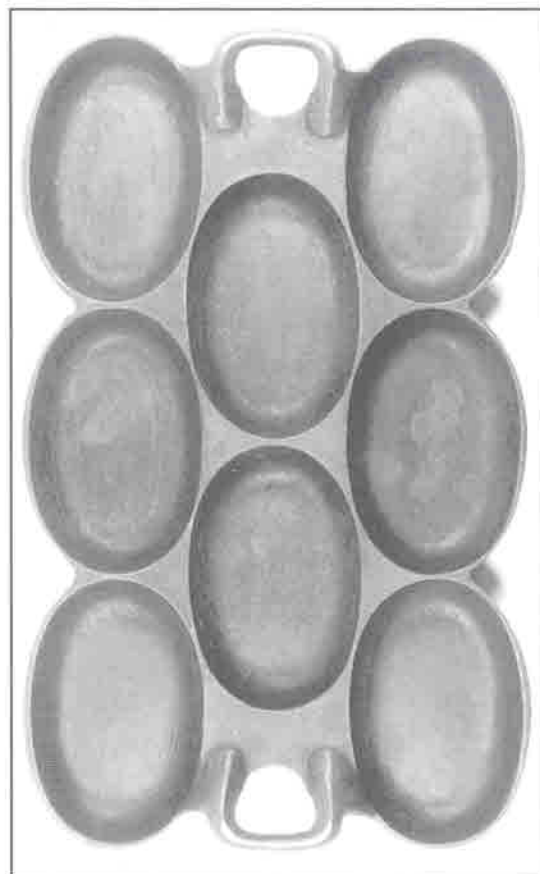
Figure 19 - No. 6 Roll Pan by the Foundry Products Co., Pendleton, Indiana



(Feature photos continued on Page 58)



Figure 18 - No. 5 G. F. Filley



N. Waterman - Boston

(Continued from Page 57)

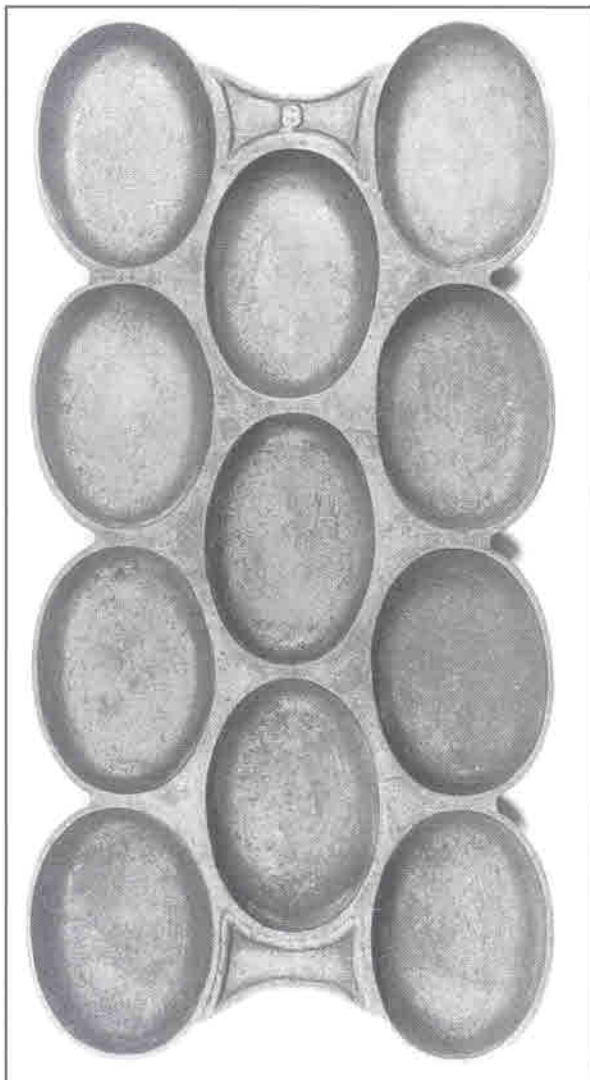


Figure 20
No. 8
Roll Pan,
maker
unknown.
Author
has five
different
styles.



Figure 21 - This No. 6 Waterman style pan is marked "4." At first glance, it appears to be made of tin, but it is cast iron. Author has four different pans in this style. Maker is unknown.



ADVERTISING

Rates are \$2.50 per column inch (or fraction thereof)
Minimum \$5.00 (Column Width: 3.5")

Your Business Card or

2" Display Ad\$ 5.00

1/4 Page\$ 12.00

1/2 Page\$ 22.00

Ads with Photo\$ 6.00 extra

Rates are for Camera-Ready Copy

Questions? Call KnC at (716) 532-5154

- ESTATE AUCTION -

The Collection of Eldon Hogan

Griswold, Wagner and other Cast Iron

Saturday, November 4, 2000 ~ 10:00 a.m.

Preview Friday, November 3, 4:00-8:00 p.m.

Held inside at Great Plains Gallery 30 miles east of Kansas City (8 miles east of Lee's Summit) on the north side of U.S. Hwy. 50 at the western edge of

Lone Jack, MO

Under the big white water tower

From I-70 exit at Grain Valley (exit 24), then south approximately 10 miles to U.S. Hwy. 50, east approximately 1 mile to Hutt Road. Watch for signs!

Included in our November 4th Antique Auction will be the personal collection of Eldon Hogan. Eldon was well known within the club and among Griswold collectors. His is a nice, clean collection with a number of rarities. As the auction date approaches, we will have a complete catalog listing. Please call for a listing by fax, mail or Email or see our web site at www.greatplainsgalleries.com

A few Griswold highlights: Lamb cake mold in box, fluters (including Erie), Erie sad iron, lemon squeezer, Bolo oven, table trivets, bail handle and other griddles (including Erie), Skillets: #2 through #20, Piqua. #4 w/heat ring, Italic waffle pan, #8, #9, #10 skillet griddles, Victor and Wagner and Sidney variations, double skillet, #8 1034 chicken pan w/ lid, Seldon and other mailboxes, loads of lids, much more Griswold. Also #10 Filley muffin pan and other good cast iron.

We're just getting started at press time. Please contact us for more information!

TERMS:

- 5% buyer's commission on all purchases
- No sales tax
- Photo ID to register
- Cash, approved check, Visa/MC
- Statements made sale day take precedence
- Absentee bids welcome
- Good home cooked food served

HOTELS:

(new hotels 10 miles west by four-lane)

Sleep Inn.....	816-554-7600
Super 8	816-524-8863
Comfort Inn	816-524-8181
Fairfield Inn	816-524-7572

Dirk T. Soulis
Great Plains Gallery

1-800-252-1501 www.greatplainsgalleries.com

In Memory of George T. Griswold

George T. Griswold of Erie, PA passed away September 18, 2000. He was the son of Roger Wolcott

The KnC Iron Net

Email addresses - New listings are in bold

David G. Smith	panman@utec.net
Mike Allen	mallen@wilbanksco.com
Don Arner	donarner@biosensors.net
D.K. Axley	dkaxley@hotmail.com
Joannie Baldini	thespider1@aol.com
Tom Beadleston	uptotime@msn.com
Dick Barnes	rbarnes@endor.com
Dave Bollinger	dbollinger@stny.rr.com
Dick Bradford	alaskaantiques@webtv.net
Grady H. Britt, Jr	ghbjr@vnet.net
Steve Buis	mila@goldrush.com
Andrew Chopak	ACHOPAK@aol.com
Gene Corral	gcorral@jps.net
James Crawford	jcrawford@conwaycorp.net
LaVon Deatsman	grisbear@iserv.net
Josh Delp	Jdelp@aol.com
Dean Fitzwater	Ftzh20@aol.com
Lou Greenstein	louepicture@aol.com
Robert Grossman	RGross1831@aol.com
Doug Guynn	DDGUYNN@aol.com
Richard M. Harold	tmharold@hntel.net
Dennis Hart	DRHART@aol.com
Jon Haussler	Jhaus23985@aol.com
Mary Ellen Heibel	mehjlh@cs.com
Don Jordan	jordanda@enoi.com
Darvin King	cicowboy@camalott.com
John Knapp	mowerman@ezaccess.net
Wayne Knauf	WKnauf@lodinet.com
Larry Lademann	LDLADEMANN@aol.com
Leonard Lange	classcoll@home.com
Kirt Leuenberber	leuenberger@brodnet.com
Diana Lynn	livinpst@norwich.net
Rosalie Lovelace	Rlovelace@usa.net
Ed Makosky	SMAKOSKY@aol.com
Robert Maxwell	onewaffle1@freewweb.com
Clarel R. Montomery	monteholm@decaturnet.com
Tom Moran	TJMjunkman@aol.com
Robert Mc Clelland	romac@wcn.net
Richard Myers	doubleerr@kna.to
Gary Nelson	cfonel@teleport.com
Butch Parthree	Par_3@pa.net
Ski & CJ Pratt	cidutch@terragon.com
Roy Proctor	roadhand@morgan.net
Douglas Royer	droyer@normandeau.com
Steven R. Russell	Canexpl@aol.com
Tom Sheley	wbuwvohio@aol.com
Philip Sirota	plshilo@atlantic.net
Richard Slonkosky	lonkosky@bright.net
Lamar Smith	pblamar@yahoo.com
Don Starkey	lilpigs@email.msn.com
Steve Stephens	mcstevestephens@yahoo.com
Bernie VerHey	gris@kcinter.net
Blake Williams	williamsf@datasys.net
Lou & Nancy Wright	ecoacres@msn.com
Patricia Young	GRISANA@aol.com

If you would like your name and e-mail address listed, send it to KnC!

Griswold, co-owner and president of The Griswold Mfg. Co. until his death in 1944. In 1992 when the Griswold & Cast Iron Cookware Association had their first swap meet, George and Dorothy Griswold attended. He couldn't have been more proud of his family's name or believe how many people had an interest in what his family made. He was so proud he went home and brought back a film from the plant for all to watch. Since then, Mr. and Mrs. Griswold had been honorary members of the association. George Griswold's death is a great loss to all who knew him; he was a wonderful person. ☺

The Melting Pot

(Continued from Page 52)

cleaner dulls the finish of the porcelain. Some collectors use a self cleaning oven for porcelain pieces but this also dulls the finish but not as severely as oven cleaner. To compensate, some apply mineral oil to bring back the shine. Others have used Plastic Coat, an aerosol spray that leaves a lasting shine. I don't like this method because it will make the piece unusable for food preparation. -ed.

Dave: I have what I think is an Odorless Skillet. On the bottom it reads: Odorless, 869, pat. October 17, 1898. I appreciate your time. -SM

SM: Your Odorless skillet is generally believed by the collection community to have been made by Griswold. Since the publication of The Book of Griswold & Wagner, I have found evidence that seems to establish that Griswold did in fact make that piece. A picture of the Odorless Skillet is illustrated in the upcoming "Book of Wagner & Griswold" which has a delivery date of November 15th. -ed.

David: Recently I came across an iron skillet manufactured by Martin Stove & Range Company of Florence, Alabama. Have you heard of this brand and how does it compare to Griswold, Erie, Wagner, etc? -DL

DL: There is a chapter on the Martin Stove & Range in the upcoming Book of Wagner & Griswold. Martin skillets were generally heavier than Griswold or Wagner, and not of as high a quality. They did make some unique pieces however. -ed. ☺

Kettles 'n Cookware is published bimonthly, six issues per volume.

COPYRIGHT 2000-All Rights Reserved. No part of this work may be reproduced without written permission from the publisher.

Subscription: \$20 per volume, including all prior issues of the volume, regardless of when you subscribe.

Checks payable to: Kettles 'n Cookware

Mail all correspondence to:

David G. Smith, Publisher
P.O. Box 247
Perrysburg, N.Y. 14129