

KETTLES 'n COOKWARE®

NOW IN ITS 9TH YEAR OF PUBLICATION

More About N. Waterman

by D.G. Smith

While sorting through more of my muffin pans, I found a few that really should be added to the Waterman article to make it more complete. I also researched the August 31, 1858 patent - more about that later.

One way of immediately differentiating Waterman pans from Waterman style pans manufactured by the most prominent companies (Griswold, Wagner, Favorite) is the straight style of the handles, versus the arc or curved style of the common Waterman and R & E Mfg. pieces.

This is evident with the No. 2 Griswold muffin pan on the cover of this issue. When this pan is turned over [fig. 2] you notice the No. 2 and the pattern number. Most Griswold No. 2s are NOT marked with a pattern number. Also the bottom of the handles of this example are rolled or curved. I believe this is the earliest version. Later examples had flat handles,

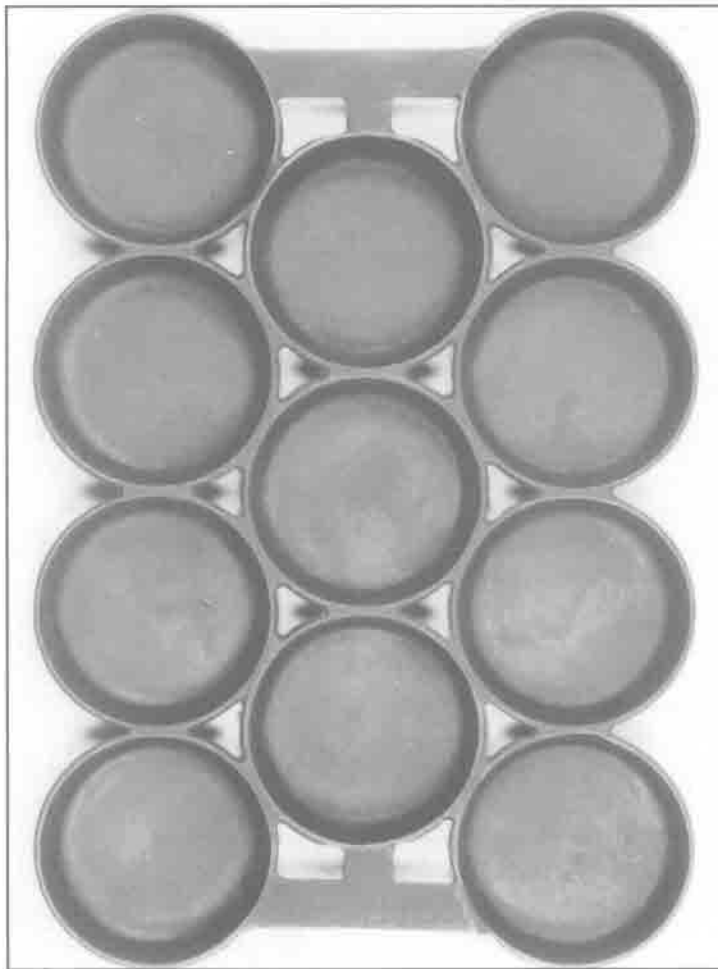


Fig. 1 - This is a Griswold No. 2 Muffin or Gem Pan. Note the straight handles.

top and bottom. Also notice that the "0" in No. 2 is the same size as the "N." This is also not consistent with Griswold markings. However, the presence of the pattern number identifies it as Griswold.

The number 6 muffin pan [fig. 3] has straight handles and is marked No. 6. Notice the position of the markings [fig. 4]; the "NO" and "6" are very widely spaced. Also there is no period after the "NO" - the Griswold No. 2 has a period after "NO." But the handles are straight on the Number 6, so isn't that Griswold?

Look at the Favorite Piqua No. 1 [fig. 5] and [fig. 6]. Look at the configuration of the marking on the handle. Now after comparing these two, is the number 6 muffin pan [fig. 3] Favorite? Did Favorite even make a number six?

Did Favorite mark all of their pieces? Who knows? Is it Griswold? I don't believe so.

(Continued on Page 63)

From The Editor

It hardly seems possible we are coming to the end of another volume of *Kettles 'n Cookware*, but here we are at issue number six - the last of Volume Nine. The next issue will be quite a milestone - the tenth year! The average tenure for a privately published newsletter is three years. Think about it; Albertson's "Collectors Newsletter" lasted about two years, "Cast Iron Cookware News," the excellent newsletter by Steve Stephens endured three years although he did publish another issue a year later; and Linda Franklin's "Kitchen Collectibles News" about the same time span. You, the readers and subscribers, with your support and generous input, and sharing of knowledge have made *KnC* work; you are the reason for its continuing success. For that, I thank you!

I never did get to the article about Griswold Stoves (hot plates) so I guess I will have to do that in Volume Ten. I also plan to do an article about the Boring (?) French Roll pan. Actually I plan on showing you that they aren't as boring as you might believe. Actually they are quite interesting. I have also been promised an article about the Griswold pattern numbers, why and how they were assigned. That should be a great one - certainly thought provoking. Also, I am open to your suggestions for articles you would like to see. Let me know.

There are a couple of short topics I want to try. One is to introduce again the question: What is the most unusual use you have seen for Griswold or other cast iron cookware pieces? Also, the question, What got you started collecting cast iron? I am sure many of you have an interesting tale to tell. I will kick it off in the next issue.

I have been working on the index for all the issues of *KnC*. It has been quite a project. I am not sure at the time of this writing if it will be done for inclusion in this issue of *KnC* or if I will have to do a separate mailing. Either way, you will have it by the end of the year! Actually I will be glad to have one for myself. I find myself looking through old issues in search of information which I know is in there somewhere. The index will also help me. Although it has been quite a project, it has been interesting and fun sifting through past issues. I am toying with the idea of using some old material to create a 10th

anniversary issue, perhaps the first issue of Volume Ten. We have really covered the gamut these past nine years - material wise and personality wise. It sure is interesting!

I had such a response to the subject "How do you display your collection," that I am going to do another feature. Please submit your clear photos of your display(s). I would like to run it in issue number 2.

On another note - We have had an unexpected three week delay in the delivery of the new book. There was some problem with the film when they shot it for publication which had to be redone.

It is always something.

We woke up to about four inches of snow yesterday morning (Nov. 15th) and it hasn't melted. I guess it is time to put away the lawn mower and fire up the snow blower. The snow sure helps push us into the Christmas spirit. Many of our neighbors are beginning to put up their Christmas decorations and lights. I just can't get into that spirit until after Thanksgiving.

My wife Catherine and I want to wish all of you a very Happy Holiday Season and in the new year, may you find that coveted piece, and all your iron shine brightly.

- Dave



Time to renew
your subscription to
Kettles 'n Cookware
\$20 per year
or for your favorite collector...
a Gift Subscription to *KnC*!
(We issue gift certificates!)

Kettles 'n Cookware
P.O. Box 247, Perrysburg, NY 14129
(716) 532-5154

Waterman Pans

(Continued from Front Cover)

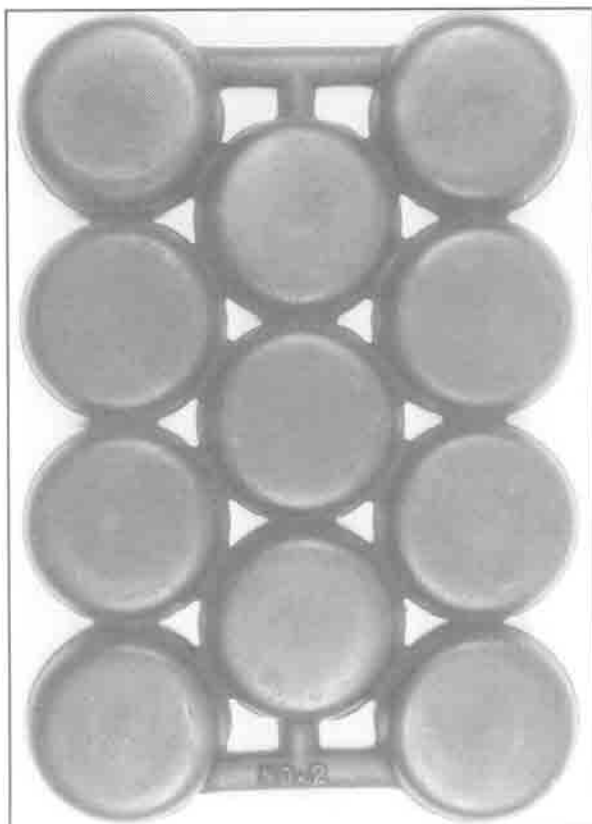


Fig. 2 - Reverse of Griswold No. 2 Muffin Pan

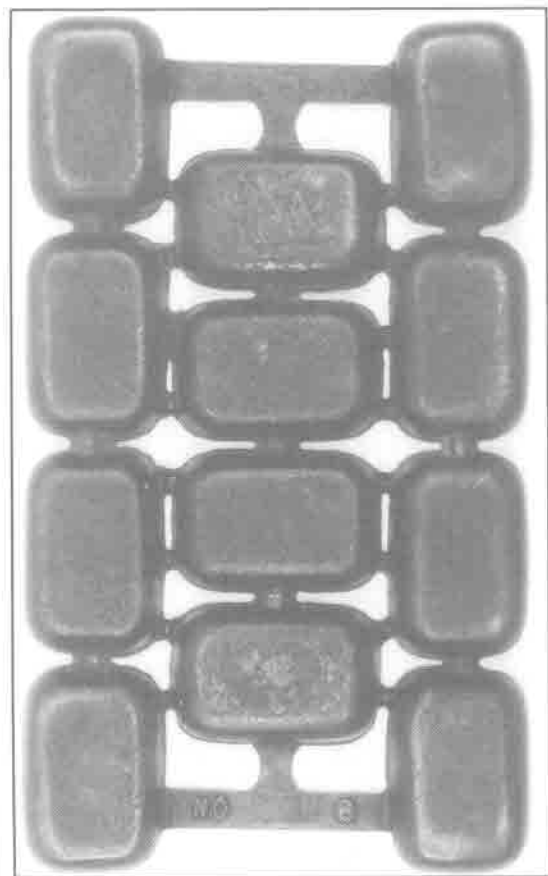


Fig. 3



Fig. 4

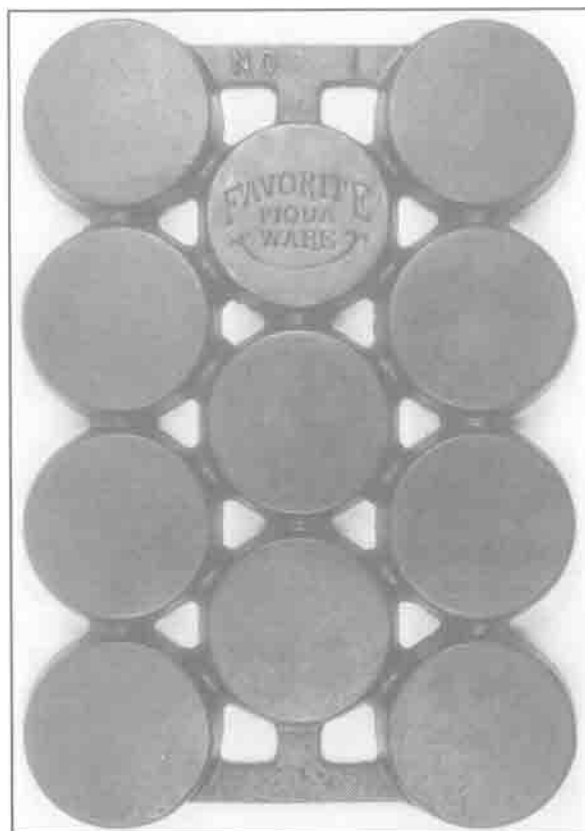


Fig. 5

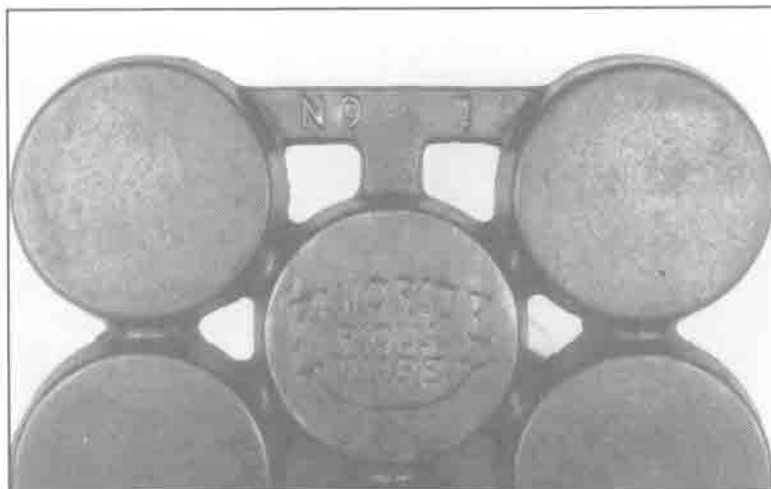


Fig. 6

(Continued on Page 64)

Waterman Pans

(Continued from Page 63)

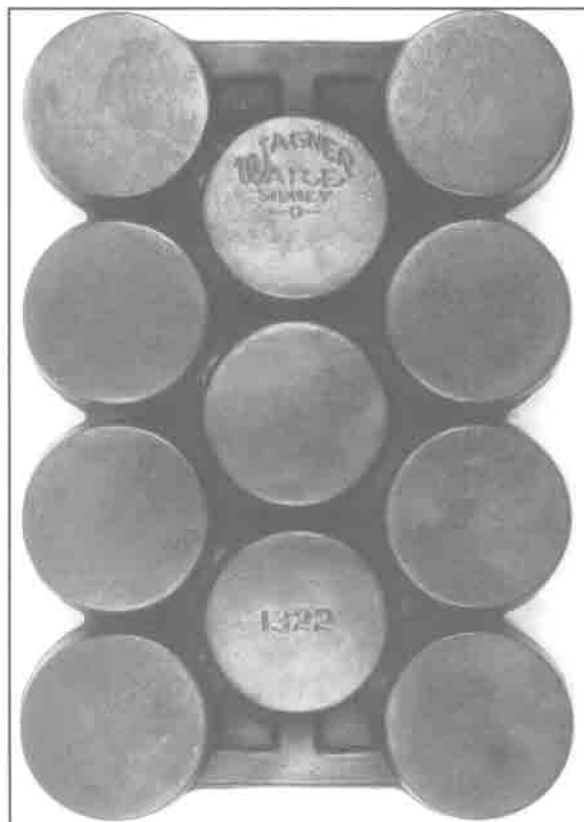


Fig. 7

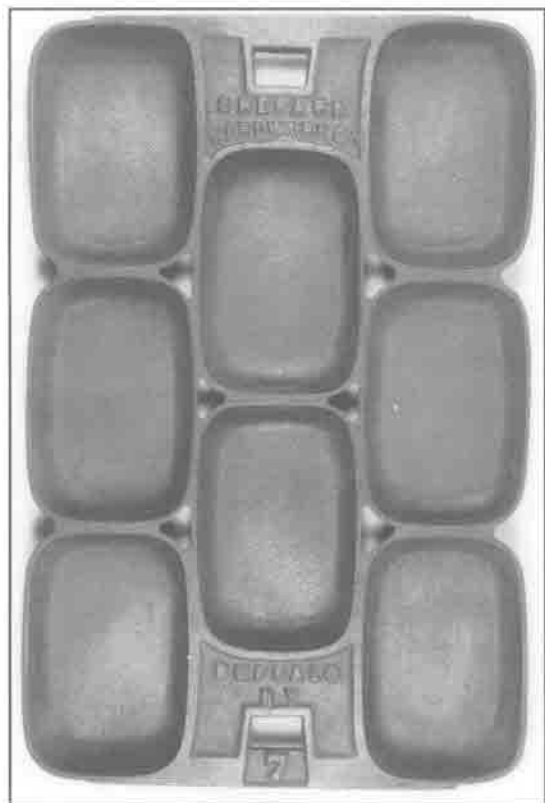


Fig. 8 - Sheppard Hardware, Buffalo, N.Y.
No. 7 Waterman style
(Continued on Page 65)

The Wagner Ware No. 1 [fig. 7] is interesting because it has a solid frame - no cut-outs. The solid frame Wagners are much more uncommon than the open frame. Both are common with the Waterman No. 1 style.

The Sheppard hardware No. 7 [fig. 8] follows suit. This pan is interesting with the cutouts for a stove lid lifter. I have only seen two other Sheppard Hardware muffin pans; a No. 10 Popover style and a No. 12 which is similar to the Griswold No. 14 (p/n 952) with rectangular cups, but has a handle on one end to accommodate a stove lid lifter.

The next two pieces are Waterman style No. 5s, one with almost a clover leaf cut-out on each end [fig. 9], and one with round holes [fig. 10]. The piece with the round holes is an eighth of an inch wider and an eighth inch longer. Neither are marked. Consequently, I have no idea of their maker. Also note the

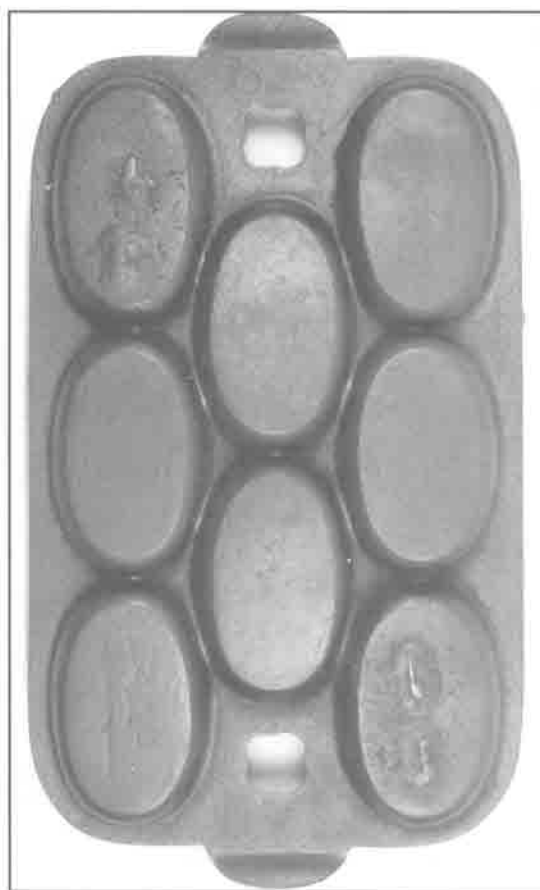


Fig. 9-No. 5 Waterman style; maker unknown

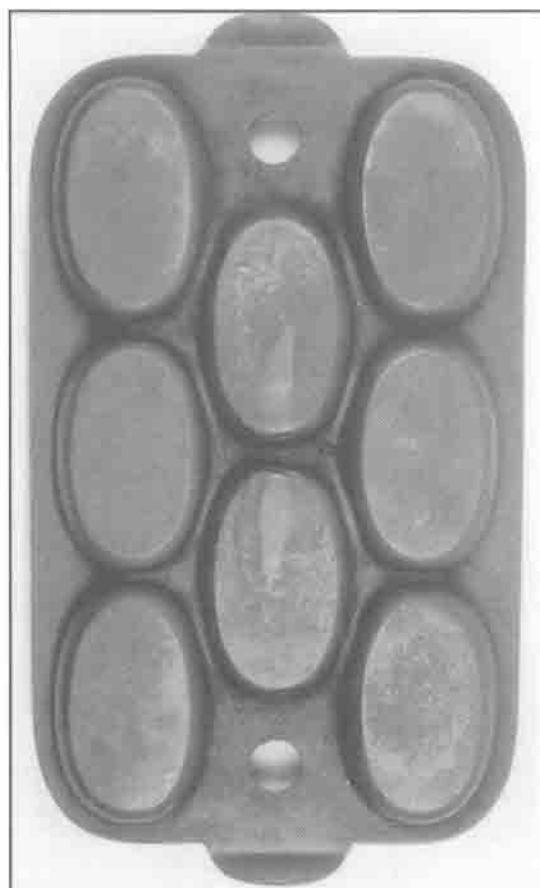


Fig. 10-No. 5
Waterman style;
maker unknown

Waterman Pans

(Continued from Page 64)

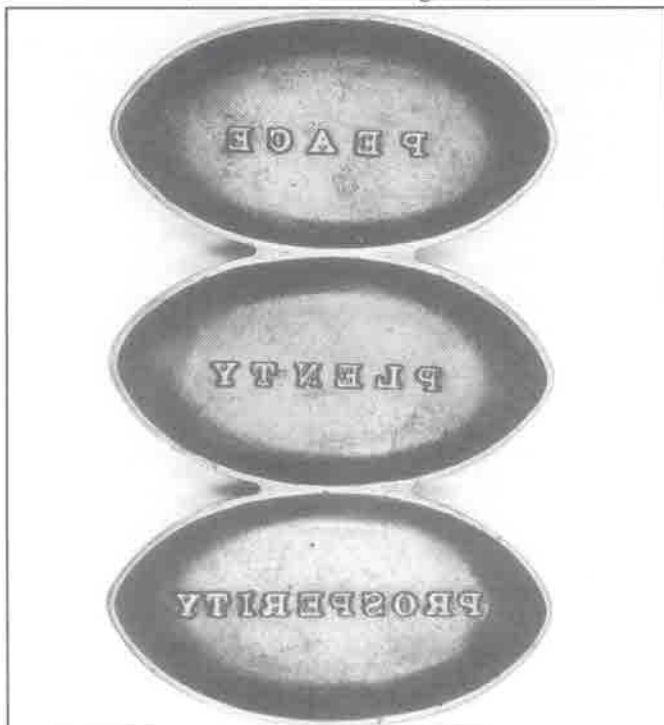


Fig. 11 - The raised letters follow the U.S. Patent dated August 31, 1858 to N. Waterman.

fairly crude gate marks.

In my previous Waterman article, I showed a patent drawing of August 17, 1858 for the original Waterman pan. I also mentioned discovering a Waterman patent date of August 31, 1858 on the oval, round, and square pans. I researched this date at the Buffalo library which now has all patents on CDs. The drawings for this patent however are missing; the U.S. Patent office doesn't have them. They have apparently been lost or destroyed. This patent, Design Patent 1046, states:

"One of said forms is represented as of an elliptical shape and having the word "faith" raised in relief within it, and the letters composing the same in reverse, so when bread or dough may be baked in said pan, the word "faith" shall be stamped thereon.

The next pan is of an elongated shape and has the word "hope" in raised letters and in reverse applied to its bottom.

The other pan is of a circular shape, and has the word "love" in relief and in reverse on its bottom. The form of each pan in other respects being as represented in the drawings - the three pans are joined together at their edges."

This patent establishes the next shapes in the sequence of Waterman Pans, the oval and round. It also clarifies the raised markings in the bottom of some.

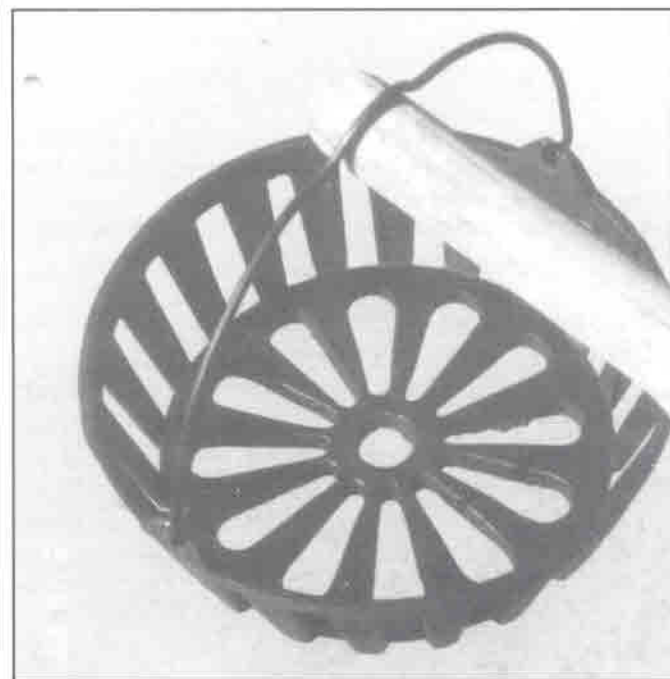
However, there are two differences here as I see it: 1. The patent description indicates to me that the three different shapes would be attached. It doesn't appear that that ever happened, although wouldn't it be marvelous to find one; 2. The words Faith, Hope and Love would be raised. As you can see in the pan [fig. 11] the cups of this piece are all elliptical and the words are Peace, Plenty, and Prosperity. I have heard of the 3-section round pan being marked with the original patent words of Faith, Hope and Love. I have not seen one however.

From experience, we have learned that many pieces manufactured are not identical to patent descriptions. This was illustrated in the *KnC* Vol. 3, No. 6 feature article. They do usually include the basic fundamentals of the patent however.

If anyone has any further information regarding the Waterman pieces, I would be most appreciative of any feedback and information you can add.



*Casting
Call*



Chuck Wafford submitted this unusual piece. It measures 3 1/2" high and 10 3/4" in diameter. There are no markings. Does anyone have an idea of what this piece was intended for?

If you would like a special piece of yours featured in "Casting Call," simply submit a clear, sharp photo to *KnC* along with a brief description.

MOVING?

Send your change of address to:

Kettles 'n Cookware

P.O. Box 247, Perrysburg, NY 14129



The Swap Shop

KEY:

| | | |
|------|---|------------------|
| p/n | = | pattern number |
| w/ | = | with |
| SR | = | Smoke Ring |
| HR | = | Heat Ring |
| ISHR | = | Inside Heat Ring |
| TM | = | Trade Mark |
| btm | = | bottom |
| EPU | = | Erie, Pa. USA |
| var | = | variation |
| emb | = | emblem |
| mkd | = | marked |

TO TRADE: No. 2 Erie Toy Skillet, super condition, re: p. 134 of The Book. **AND I SEEK:** #11 Griswold Tite-top Dutch oven, large block w/raised letter lid, and trivet; I may consider a trade for Griswold #3 and #5 raised letter cast iron skillet covers or a Griswold #4 Cast Iron skillet cover. No rust, cracks, chips, repairs or major pitting in these items. I will pay shipping/insurance of the items traded minus my shipping. Contact: Kay Axley, P.O. Box 790, Los Alamos, NM 87544. Phone (mountain time) 505-661-6203; email: dkaxley@yahoo.com

**KnC Classifieds are FREE
up to 150 words & numbers**

GRISWOLD WANTED: #3 Hinged Skillet; #5 Hammered Hinged Skillet Lid. **GRISWOLD FOR SALE:** #8 Deep, marked "OR CHICKEN PAN" skillet, p/n 777 \$95; #8 Hammered Hinged Skillet & Lid p/n 2008 - 2098 \$95; #8 hinged Skillet & Lid large logo \$110; #8 Square Skillet p/n 2108 \$60; 273 Red/Cream Cornstick Pan (Mint) \$100. **WAGNER FOR SALE:** #4 Smooth bottom Skillet c/n 1054 \$55; #7 center marked h/r Skillet \$40; #9 5-ring Skillet Lid \$40. **MISC:** Arcade Lemon Squeezer w/aluminum insert \$55; #70 (Parker) Chuckwagon Coffee Grinder \$125. Pat Collins, 509 N Oak, Clovis, NM 88101. Call (505) 769-1894 after 6 PM MDT. All pieces clean in VGC, Shipping extra, Satisfaction Guaranteed.

GRISWOLD FOR SALE: Aluminum Griswold Pup, fully marked \$225; #2 smooth btm Skillet \$375; #2 Slant EPU HR \$500; #1 fully marked Gem Pan \$250; #3 Square Skillet, black iron w/white porcelain interior, "mint" \$225; Wafer Iron, paddles only Pat'd 1880 \$100; #20 Hotel Skillet \$625; #6 High lettered Chrome Skillet Cover \$125; #6 Aluminum Skillet Cover \$55; #10 aluminum Popover Pan \$40; Aristocrat Aluminum Handle Griddle \$30; USE ERIE BEST Toy Tea Kettle \$475; #6 Waffle Iron \$575.

WAGNER & MISC FOR SALE: Ashtrays- (2) speckled porcelain, (1) brass and (1) Lodge-All 4 pcs. \$45; #710 aluminum Long Spoon \$35; Senior aluminum Cornstick \$25; Bundt Pan fully marked W.Ware, B, 1310 \$250; #13 Skillet c/n 1063 \$375; '0' Tea Kettle & Bailed Griddle \$250; Eugene, Oregon Aluminum Dipper \$35; Sheppard Hdwe #7 Gem Pan \$80; Brown Stove Works mini 2 1/2 Adv. Ashtray \$35; #2 Wagner Skillet \$90. Call Dave at (814) 899-7926.

WANTED: Oval Trivet for Griswold #7 Oval Roaster. Call Tony at 1-800-931-1810; Email: DATSCHIRKY@aol.com

GRISWOLD FOR SALE: #7 High Dome Lettered Lid \$125; #770 Red & Cream Ashtray \$60; #7 Button Logo Lid \$85; #8 Low Dome Lettered Lid \$55; #9 Low Dome Lettered Lid \$55; #6 High Dome Smooth Lid \$90; #7 High Dome Lettered Lid \$75; #5 Low Dome Lettered Lid \$650; #83 Casserole dish, black iron w/white porcelain interior \$85; #11 Low Dome Smooth Lid \$750; #8 French Waffle Iron marked Selden Griswold, Web pattern \$850. Call Kevin at (814) 476-7210

GRISWOLD FOR SALE: #2700 What Stick Pan #335; One Set of Finger Hinge French Waffle Paddles w/Wood Handles - No Pattern numbers \$125; #3 Low Smooth Skillet Cover (dplated) on Small TM late handle Skillet \$395; Brown Wood Skillet Display Rack \$395; #8 Aluminum Wood Handle Griddle, Black TM \$15; #8 Pressed Aluminum Dutch oven Trivet \$10. **WAGNER FOR SALE:** #0 Tea Kettle, stylized logo \$160; #0 Skillet marked "WAGNER" \$55; #0 Bailed Griddle, stylized logo \$100; #4342 Large Magnalite Sizzling Platter w/ Original Oak Handles \$25. **MISC. FOR SALE:** Ober #1 Toy Flat Iron \$150; Wapak #2 Toy Flat Iron \$85. **We are always interested in Iron Wood Handle Skillets and Griddles by any major manufacturer.** All "for sale" pieces are of black iron unless otherwise noted. Buyer pays postage and insurance. **SATISFACTION GUARANTEED.** Contact PAT & GRANT WINDSON, P.O. Box 72606, Richmond, VA 23235-8017; (804) 320-0386

WANTED: Wagner '0' Skillets marked: WAGNER MFG, CO, and "SIDNEY". **ALSO WANTED:** unusual Broilers and Grid Irons; Pieces with unusual repairs. Dave Smith (716) 532-5154 email: panman@utec.net

GRISWOLD FOR SALE: No. 8 Waffle Iron, early

(Continued on Page 67)

The Swap Shop

(Continued from Page 66)

finger slot hinge, nice wood handles \$165; No. 3 sm bottom Skillet, large block, w/smooth top high Lid \$155; No. 3 Skillet, block w/grooved handle \$45; No. 9 Skillet, lg. emb. block letters w/HR, & Low Lid \$90; No. 6 sm btm, sm emb Skillet \$29; No. 6 sm btm, lg block Skillet \$50; No. 7 sm btm, sm emb, grooved handle Skillet \$30; Iron Mountain Skillets p/n's 1033, 1034, 1035 \$100 for three; "ERIE" No. 8 Skillet Griddle, p/n 738 \$30; Griswold/Erie No. 9 Dutch oven w/Lid \$60. **WAGNER WARE FOR SALE:** WW No. 4 Center logo w/HR \$155; WW No. 9 w/HR \$30; WW No. 8 w/HR Center logo \$30; "SIDNEY" No. 9 Skillet Griddle \$65; WW Sizzle Server c/n 1095 \$25; "WAGNER" Sidney O. No. 8 w/HR Skillet \$45; NATIONAL Wagner Ware, center logo w/HR Skillet \$85; "WAGNER" Sidney O 6 quarts Bail handle w/HR alum \$45; **MISC FOR SALE:** Favorite Piqua Ware sm btm Skillet \$30; Lodge Biscuit Pan (cast iron) \$45; Favorite Piqua Ware marked THE BEST TO COOK IN, No. 8 \$65. Doug Brown, 8520 McDougal, Thornton, CO 80229. Phone (303) 288-5910

WAGNER WARE FOR SALE: WW #4 Skillet # 1054 nickel plated \$45; WW #4 #1054B SR \$40; WW #1363 Hot Pot/no lid \$25; Wagner alum Sugar Scoop \$20; WW Sizzling Platter #4341 \$15. **GRISWOLD FOR SALE:** #4 Skillet lg blk #702 \$50; 'O' Grinder w/4 blades + 1 cast #2375 \$75; #68 Red Casserole \$45; Iron Belt Buckle \$20. **LODGE:** #4 Skillet #A SR \$40. **TOYS:** Wagner skillet-Sidney \$45; WW Gypsy Kettle \$45; Wagner Skillet \$45; WW #1368 kettle \$45; WW 1991 Toy Set \$45; Stover Junior Waffle \$135; Griswold Adv. Tea Kettle/no lid \$150. Prices are plus shipping. Johnston 352-861-9676.

REPRINT OF 1924 WAGNER WARE CATALOGUE No. 30 (90 high quality pages), \$17.50 (postage included). **WAGNER CAST IRON FOR SALE OR TRADE:** PIE LOGO SKILLETS, No. 3, \$22; No. 11, \$325 (or trade for No. 12); No. 7 \$125 (or trade for No. 6 or 9); WW No. 4 s/r skillets w/ and w/o c/n, \$45. No. 4 no s/r w c/n—\$65; "WAGNER" (arc) No. 11 skillet—\$95; "R" Pan (c/n 1336), no cut outs—\$48; No. 10 top writing skillet cover (c/n 1070), \$150. **WAGNER ALUMINUM FOR SALE OR TRADE:** Sizzling Steak Platters(hammered), c/n 3441, \$18.; Sizzling Platters, c/n 4342—\$18; Sizzling Host Platter, c/n 4343, \$22. **WAGNER WANTED:** "Paddle" for Sandwich Toaster (c/n 1455). **WAGNER SKILLET COVERS WANTED:** RINGED TOP, No. 14 (c/n 1073); COVERS WITH KNOB, any size. **CAST IRON SKILLETS WANTED:** SIDNEY, No. 0 and No. 2 and all marked with the script logo, except Nos. 8, 9 and 11; **GRISWOLD FOR SALE OR TRADE:** Small logo #4's, Late or Grooved Handle, \$30 ea.; #9 skillet lid (p/n 469- fully marked), \$85; No. 18 Popover Pan (Var. 6), \$75. **GRISWOLD'S ERIE SKILLETS WANTED:** Nos. 5, 10-12. **MISC. FOR SALE OR TRADE:** Stover

Jr. Waffle Iron, \$125. Vollrath No. 8 lid w large inside writing, \$55. Shipping extra. Contact John W. Wright, P.O. Box 3640, Prescott, AZ 86302, 520/445-3639 or wright@northlink.com.

GRISWOLD FOR SALE: Griswold Santa Mold, Excellent Condition with Tongue and Casting line in Toy Sack, \$535; Griswold No. 31, fully marked Variation 4, Excellent Condition, \$175; Griswold "O" Skillet Red and Cream Porcelain, Exc, \$45; Griswold No. 17 French Roll, Var. #6, Exc, \$130; Griswold No. 28 Wheat Pan, Var. 1, \$235; Griswold/Skinner Marked Odorless Skillet, \$200; Griswold No. 6 Muffin, Var. #2, \$85. **WAGNER FOR SALE:** WW Little Gem Muffin Pan 12 Cup Open Frame, ALUMINUM, \$110; WW No. 11 Skillet and Raised Letter Lid, \$225. **WANTED ITEMS:** Atlantic Bread Pans; Barstow Stove Bread Pans; 6 Cup Cloverleaf Donut Mold; Waffle Irons with Unusual Patterns inside; Waterman 3 Cup Muffin Pans; Waterman Waffle Irons; Tilter Tea Kettles. Prices do not include shipping. Robert Karle, 344 Rt. 147 Middlefield, CT 06455. Phone 860 349-1212, Best Time 8-9 PM Eastern Time. Email: bkarle@prodigy.net

DEADLINE FOR NEXT ISSUE

January 15, 2001



*Happy Holidays
to all!*

David & Catherine Smith



The Melting Pot

Dave: I recently bought a #10 bailed round griddle with the raised ring in the middle of the bottom surrounding the logo (large slant with just the words ERIE underneath). The dealer suggested that it might have belonged as the top of the gas griddle. The photo you have in the current *Book*, just shows the top. It looks like the regular bailed round griddle. Was/is there a special top for this item? Even if this was the case, the gas griddles are sized 12 and 14, so I would assume that would be the size of the corresponding tops. I figured that if anyone would know, you would. Thanks for any insight you might have. —LG

LG: The only significant difference of the griddle that fits on the Vapor Griddle base is a protrusion in the center of the griddle which the fastening bolt threads into, to hold the griddle to the base. They also came in different markings. The one in *The Book* is actually a Diamond Logo. What a shame it doesn't show. Also, the No. 14 Vapor Griddle rests on the same base as the No. 12 and hangs over considerably. It is illustrated in the new *Book*. We also show, in the new *Book*, two Bail Handle Griddles with the center reinforcement ring. On page 34 of *KnC*, Volume 7, No. 3, there is a picture of a Bail Griddle with the round reinforcement ring. The ghost marks of several variations of markings are also evident. I would guess the ring on your griddle is just a standard reinforcement for the griddle. —ed.

KETTLES COOKWARE ADVERTISING

Rates are \$2.50 per column inch (or fraction thereof)
Minimum \$5.00 (Column Width: 3.5")

Your Business Card or

| | |
|----------------------|---------------|
| 2" Display Ad | \$ 5.00 |
| 1/4 Page | \$ 12.00 |
| 1/2 Page | \$ 22.00 |
| Ads with Photo | \$ 6.00 extra |

Rates are for Camera-Ready Copy

Questions? Call KnC at (716) 532-5154



Dear Dave: Enclosed are a couple of pictures of a "find" by a friend of mine who is more into kitchen collectibles than cast iron. It is, in case it isn't obvious, an ice scraper almost identical to the Griswold shown in "*The Book*." The measurement is the same and the only apparent difference is that lack of a hole on the top, and the hinge is slightly different. Also the Griswold is described as being tinned - this one, though most is gone, appears to be porcelainized on the inside. The maker was Logan & Strowbridge Iron Co. New Brighton PA - A No. 12. Who copied who? —BN

BN: Back then, everyone copied each other (as they still do today if they can get away with it). Patent rights were bypassed by a change in the hinge or some other working type of different construction. That style of Ice Shaver or Shredder is quite common, made by several different manufacturers. "*300 Years of Kitchen Collectibles*" by Franklin lists thirteen makers. Enterprise was probably the largest maker. —ed.

Dave: Do you know anything about a #8 skillet that has the #258 as the only identification and it is on the bottom of the skillet where most pattern #s are located? It also has an "8" on the top of the handle. —BM

BM: That skillet is one of the unmarked series referred to
(Continued on Page 69)

The Melting Pot

(Continued from Page 68)

in the chart on page 25 of The Book. — ed.

Dave: I found a No. 27 Wheat Stick Pan, with cutouts, nicely cast, fully marked (although faded), in cast aluminum. There is no name of Griswold on the topside lower handle as with the other No. 27's. Any idea about the rarity of this pan? Many thanks. — DH

DH: Although there are a few aluminum muffin pans in the new book, the #27 is not one of them. I would say they are not very common, but typical of most aluminum pieces, they don't seem to be as desired by collectors as iron pieces. Consequently, I would value the aluminum #27 at about half of the iron one. — ed.

Hello Dave: I just bought a Griswold #2 skillet w/heat ring. On the back it has the slant logo with the 2 above it, and says Erie with the #703 under it. There is no PA USA on this piece. The thing I am wondering about is on the top of the handle there is no #2 where their #s generally are. Can you tell me anything on this piece? Thank you for your time. — SP

SP: The Book lists six different variations of number 2 skillets. Yours dates 1900-1910. The earlier pieces were not marked on the top of the handle. — ed.

Hi Dave: Just a quick question about who made and marked cast iron cookware with the SK mark. We have seen several on Ebay. We recently obtained a #8 skillet, with heat ring, and expansion cuts at the 9, 12, and 3 o'clock positions, and a D at the 6 o'clock position. Would appreciate any help you may forward to us. — EM

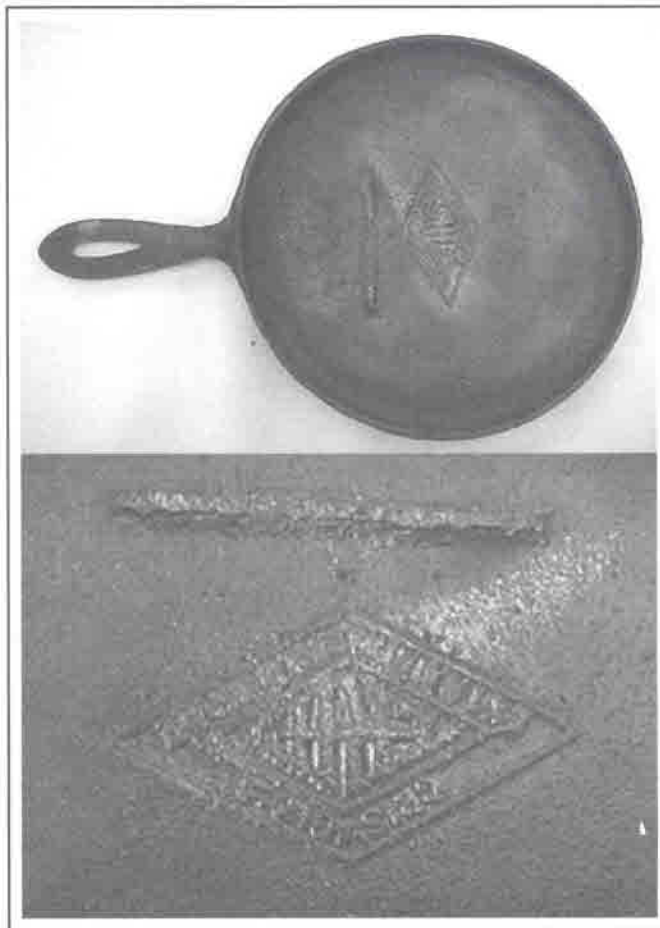
EM: The breaks in the heat ring indicate your skillet was manufactured by the Lodge Mfg. Co. of South Pittsburg, Tennessee. There is a chapter about Lodge in the new book which should answer a lot of questions about Lodge. — ed.

Dave: I have a Chef Skillet with Griswold and Chef Skillet marked on the bottom. On top it looks like the pan was woven like a web with circles. I never saw one like it before. Do you know anything about it? — MT

MT: The Chef Skillet was produced in the 1960s. Although quite well polished, the inside frequently did show the grinding rings. I would guess the web appearance you refer to could have been caused by repeated cutting of whatever was cooked in it. This is frequently seen in skillets which people used for baking corn bread. Do you suppose this is a possibility with your skillet? — ed.



Repro Alert



Collector Howard Seifert found this very interesting piece. This Griswold No. 6 Handle Griddle is much heavier than an original should be. Also, the presence of a gate mark indicates this was not a Griswold production piece. What a great find this Diamond logo piece would be if it was legitimate. This was probably not done in any volume. It was most likely done by someone fooling around using an original piece as a pattern. Pieces like this are sometimes called "School Shop Projects" by some collectors.

Kettles 'n Cookware is published bimonthly, six issues per volume.

COPYRIGHT 2000—All Rights Reserved. No part of this work may be reproduced without written permission from the publisher.

Subscription: \$20 per volume, including all prior issues of the volume, regardless of when you subscribe.

Checks payable to: Kettles 'n Cookware

Mail all correspondence to:

David G. Smith, Publisher

P.O. Box 247

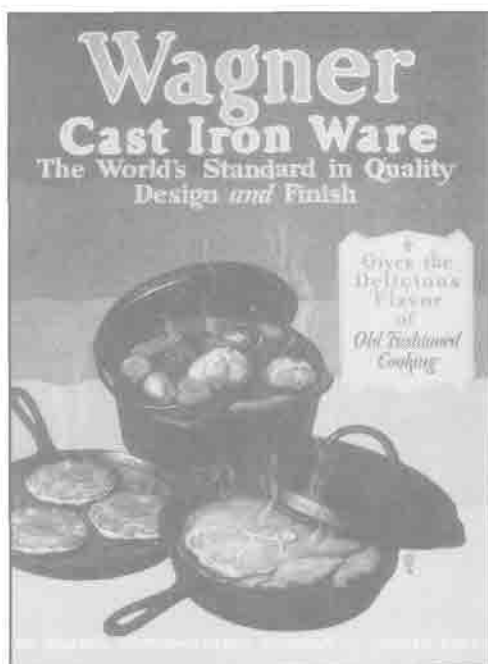
Perrysburg, N.Y. 14129



Great Holiday Giving Ideas

Wagner Catalog No. 58 Reprint c.1931

8"x10", 24 pgs. with full color cover. Contains clear, sharp pics of Wagner's line in that period, including skillets, griddles, roasters, muffin pans, kettles, toys, waffle irons, cake molds, sandwich toaster, sad iron heaters, etc.



\$20.00 post paid



Griswold Catalog No. 45 Reprint c.1910

6" x 9", 138 pgs. This is a great reprint with photo sharp artist drawings.

**\$25.00
post paid**



Gift Subscriptions

to KnC are just \$20
(we issue gift certificates)



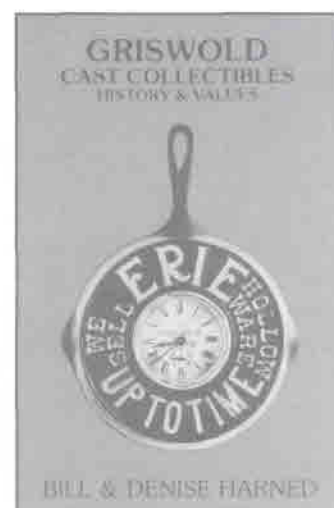
Kettles 'n Cookware

P.O. Box 247, Perrysburg, NY 14129 (716) 532-5154

Griswold Cast Collectibles ~ Harned

This is the book that started it all! Contains photos, recipes, list of patents, illustrations of various logos and lots more not included in other references. This book is out of print so don't wait to acquire this valuable reference.

**\$13.00
post paid**



Camper's Guide to Outdoor Cooking~ Ragsdale



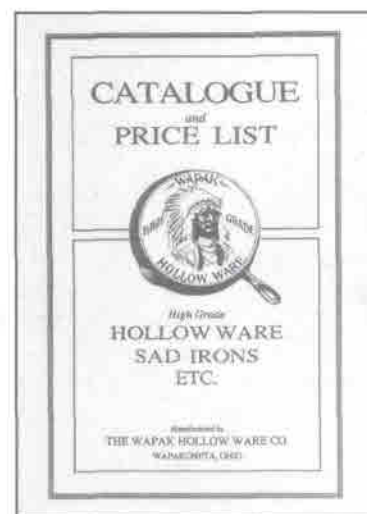
5 1/2x8", 170 Pgs. This book covers everything from selecting wood for the fire to preparing desserts. It advises on meal planning and gives cooking tips.

This is an excellent book for the camper.

\$9.95 post paid

Wapak Catalog Reprint c.1912

Excellent reference of products of the Wapak Holloware Co. Includes skillets, griddles, kettles, waffle irons, gem pans and sad irons. Also illustrated are hardware items like lawn furniture, urns, hitching weights, etc.



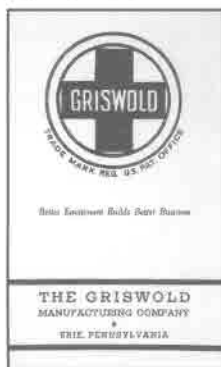
\$15.00 post paid

For Your Favorite Collectors!

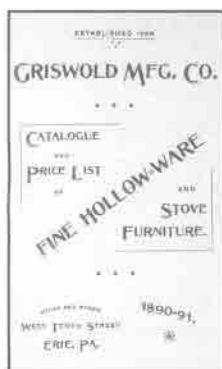


Griswold 1940 Catalog Reprint Large (8 1/2" x 11") Size ~ 84 Pages

Illustrates Cast Iron Cookware including the hinged skillets, Dutch ovens and sets; hammered finished pieces including sets, black porcelainized skillets, Aluminum including Aristocraft, Hammercast and Polished; dampers, gas hot plates, Kwik Bake electric ovens, Bolo ovens, and chrome serving dishes.



\$19.95
post paid

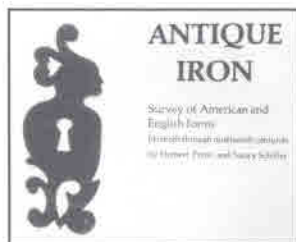


Griswold 1890-91 Catalog Reprint 6" x 9" ~ 77 pages

This catalog reprint is full of early unmarked pieces. Illustrations include such rare pieces as coal shovels, fireplace sets, stove pipe shelves, early trivets, cuspidors,

copying press, anvil, umbrella stand, etc. Without this reference, you will pass some of the rare unmarked Griswold treasures.

\$16.50 post paid



ANTIQUE IRON Survey of American and English Forms ~ 15th- 19th Centuries

8 1/2" x 11" Hard Cover, 320 pages, 915 photos and 66 drawings. Includes utensils, fireplace equipt., lighting, fire marks, toys, weathervanes, architectural hardware.

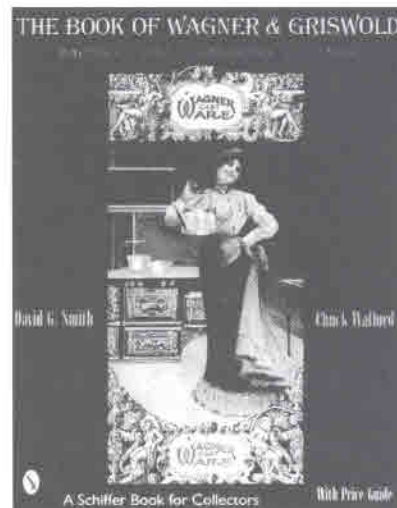
\$59.95 post paid

Kettles 'n Cookware

P.O. Box 247, Perrysburg, NY 14129 (716) 532-5154

The (New) Book of Wagner & Griswold

256 pages (16 pages in color) of brand new material illustrated by 845 photos including 225 pieces of Griswold and 350 pieces of Wagner, not in Book One. Also included are chapters on Martin Stove, Lodge, Vollrath, and Excelsior Mfg. Co. (G.F. Filley). The format of this new book is basically the same as Book One and will seem very familiar to use.



The Book of Griswold & Wagner ~ 2nd Edition

New, expanded 2nd Edition. Over 130 new listings; updated values.

**Each Book
\$32.95 post paid**

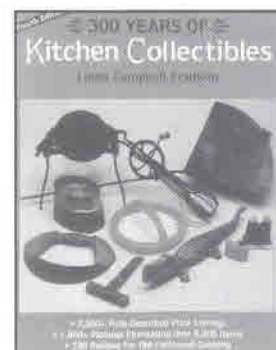
BUY BOTH & SAVE \$3.90! 2 for \$62.00 post paid



300 Years of Kitchen Collectibles, 4th Edition by Linda Campbell Franklin

This is the 648-page encyclopedia of kitchen collectibles. This fantastic book includes a wide variety of cast iron cookware, and a special chapter by David G. Smith about muffin pans.

\$27.95 post paid





Convention Charms

Sterling Charm Holders (Holds 6 Charms)
\$100.00

2000 Cowboy Hat Charm
14k Gold \$175.00 (3 left)
Sterling \$95.00 (12 left)

1999 #32 Egg Poacher Charm
14 Gold \$175.00 (2 left)
Sterling \$95.00 (4 left)

1998 Teapot Charm
Sterling \$95.00 (1 left)

1995 Heart & Star Gem Pan Charm
14k Gold \$140.00 (1 left)

**1996 DoubleSided Spider & Griswold
Logo Charm**
14K Gold \$200.00 (11 left)

These charms are designed exclusively for each convention. Only a certain amount are made, then the mold is broken. This is what I have left.

Please contact:

Joan Baldini
3007 Plum St.
Erie, PA 16508
814-459-2503 days
814-868-1316 eve.

or

Judy Kuhn
8695 Perry Hwy.,
Rt. 97
Erie, PA 16508
814-866-6096

The KnC Iron Net

Email addresses - New listings are in bold

David G. Smith
Mike Allen
Don Amer
D.K. Axley
Joannie Baldini
Tom Beadleston
Dick Barnes
Dave Bollinger
Dick Bradford
Grady H. Britt, Jr.
Steve Buis
Jim Campbell
Andrew Chopak
Gene Corral
James Crawford
LaVon Deatsman
Josh Delp
Dean Fitzwater
Lou Greenstein
Robert Grossman
Doug Gynn
Richard M. Harold
Dennis Hart
Jon Haussler
Mary Ellen Heibel
Charles Humphries
Don Jordan
Darvin King
John Knapp
Wayne Knauf
Larry Lademann
Leonard Lange
Kirt Leuenberber
Diana Lynn
Rosalie Lovelace
Ed Makosky
Robert Maxwell
Clarel R. Montgomery
Tom Moran
Robert Mc Clelland
Richard Myers
Gary Nelson
Butch Parthree
Ski & CJ Pratt
Roy Proctor
Clark Rader
Douglas Royer
Steven R. Russell
Tom Sheley
Philip Sirota
Richard Slonkosky
Lamar Smith
Don Starkey
Steve Stephens
Bernie VerHey
Blake Williams
Donald Wood
Lou & Nancy Wright
Patricia Young

panman@utec.net
mallen@wilbankscorp.com
donarner@biosensors.net
dkaxley@hotmail.com
thespider1@aol.com
uptotime@msn.com
rbarnes@eagle1st.com
dbollinger@stny.rr.com
alaskaantiques@webtv.net
ghbjr@vnet.net
mila@goldrush.com
RedWCab@aol.com
ACHOPAK@aol.com
gcorral@jps.net
jercrawford@conwaycorp.net
grisbear@iserv.net
Jdelp@aol.com
Fitzh20@aol.com
louepicture@aol.com
RGross1831@aol.com
DDGUYNN@aol.com
tmharold@hutel.net
DRHART@aol.com
Jhaus23985@aol.com
mehjih@cs.com
c.m.h.@eastlano.net
jordanda@encoi.com
cicowboy@camalott.com
mowerman@ezaccess.net
WKnauf@lodinet.com
LDLADEMANN@aol.com
classcoll@home.com
leuenberger@brodnet.com
livingst@norwich.net
Rlovelace@usa.net
SMAKOSKY@aol.com
onewaffle1@inct.net
monteholm@decaturnet.com
TJMjunkman@aol.com
romac@wcn.net
doublerr@kna.to
cfonel@teleport.com
Par_3@pa.net
cidutch@terragon.com
roadhand@morgan.net
crader@mailhost.col.ameritech.net
droyer@normandean.com
Canexpl@aol.com
wbwvohio@aol.com
plshilo@atlantic.net
lonkosky@bright.net
pblamar@yahoo.com
lilpigs@email.msn.com
mcstevestephens@yahoo.com
gris@kcinter.net
williamsf@datasys.net
Bryarwood@aol.com
ecoacres@msn.com
GRISANA@aol.com

If you would like your name and e-mail address listed, send it to KnC!