

KETTLES 'n COOKWARE

\$2.50

Introductory Issue

April 1992

Erie Historical Museum Features Griswold Display

What more appropriate setting could possibly be found for a display of products manufactured by the Griswold Manufacturing Company of Erie, Pennsylvania than the beautiful estate once occupied by a Griswold family member.

The Watson/Curtze Mansion, located on 6th Street in Erie was the home of Ely Griswold and his wife Winifred Watson Griswold from 1910 to 1918. Ely was the son of Matthew Griswold, who with

Samuel Seldon and John Seldon founded the Griswold Manufacturing Company. The Watson/Curtze Mansion is now the Erie Historical Museum which is operated by Gannon University.

The Griswold display which opened Feb. 4 is the combination of nearly 400 unusual to rare pieces on loan to the museum from collectors: Sue and Larry Foxx; Jim and Sally Swanson; Joe and Joan Baldini; David and Catherine Smith; Jim, Pat



The Museum displays were artistically arranged by Sally Swanson, Joan Baldini and Sue Foxx.

and Mike Erdley; Dick & Ester Miller; and Bill and Arlene Bailey, with select pieces from other collectors.

Never has such an astute collection of Griswold pieces been displayed in one location. Where else could you go and see eight variations of the number two skillet, number 14 bail handle skillet, several different toy sets, four display stands, 16 unusual to rare waffle irons, the Eldorado charcoal stove, burglar alarm, Washington Bicen-

tennial skillet cover, spider logo skillet, ham boiler, thimble, starting pistol, umbrella stand, bundt mold, and 60 muffin pans, all under one roof. The display is enhanced with photographs of Griswold operations, and display ads, all arranged in an eye catching and artistic manner. The display is truly phenomenal!!!

The exhibit runs until April 20.



The founders of the Griswold Manufacturing Company: Samuel Seldon, John Seldon and Matthew Griswold. These portraits are on loan from George T. Griswold.



From the editor....

From conversations with many collectors, plus my own experience, I have concluded there is a real need for a medium for collectors of cast iron cookware to share information and perhaps even voice their opinion about relative issues. There is also a need for a reliable method to be able to advertise to buy, sell, and trade on a regular basis. After much thought I have decided to publish a newsletter to

satisfy those needs.

A very knowledgeable and experienced collector, and friend, Joel Schiff, has agreed to join me in this venture. Welcome to **Kettles 'n Cookware**.

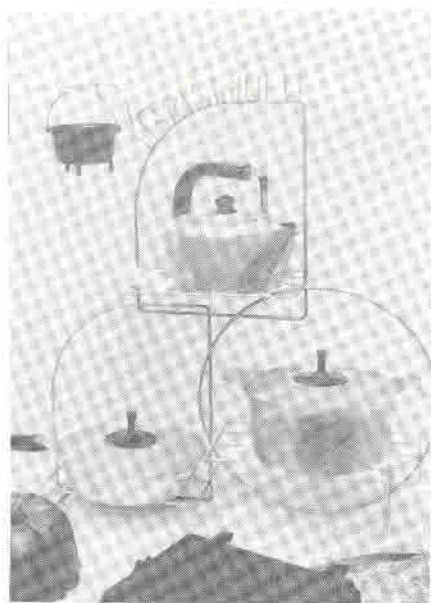
Kettles 'n Cookware will provide information and contain opinion, surmise, and rumor, all identified in the appropriate role so we know which is which. It will cover the full spectrum of cast iron cookware,

however have no fear; for you Griswold fanatics and/or those who worship at the altar of Griswold we will endeavor to at least satisfy your mutual addiction to keep you coming back for more.

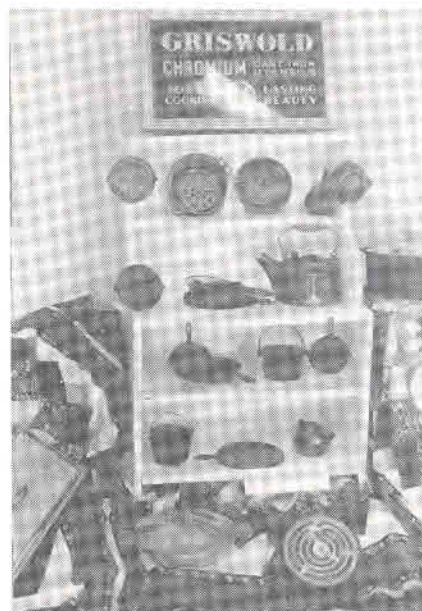
Kettles 'n Cookware will be published bimonthly, and timely, beginning with this introductory issue.

Regular topics will include:

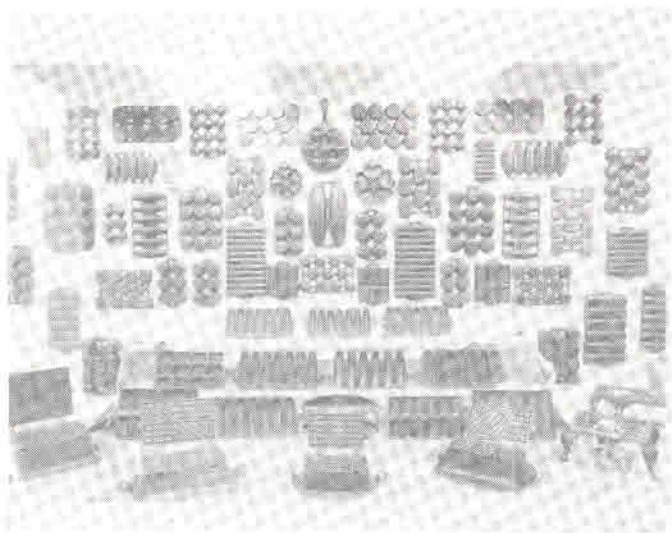
- * Feature Articles
 - * The Exchange: a column of classified ads
 - * Heavy Metal News: current happenings
 - * Fakes and reproductions
 - * Current values based on analysis of shows, auctions, and sales which indicate current trends.
- This publication will be tailored to you, collectors of cast iron cookware. Tell us what you want.



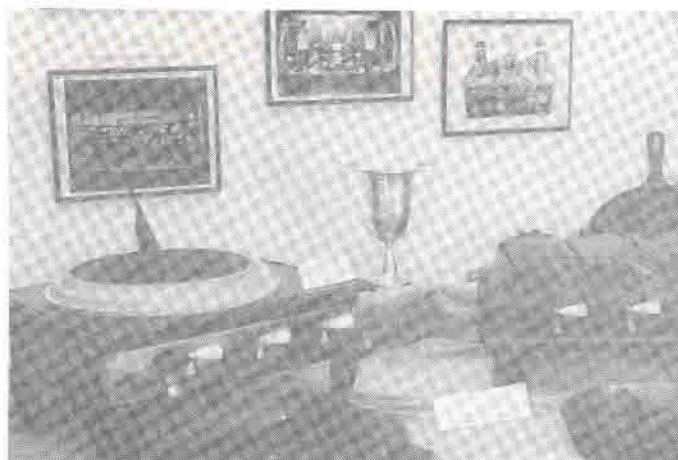
An Art Deco Style, this display rack is from the 1950 era. Collection of Jim, Pat and Mike Erdley.



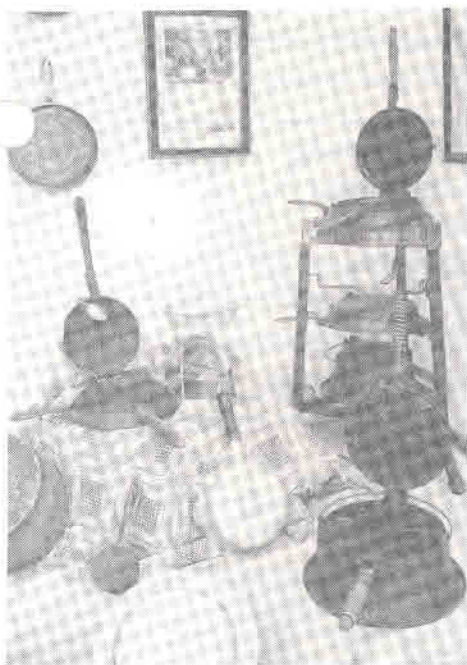
"O" Toys in Griswold, Erie and Erie Wares Best markings. Also on the side of the second shelf is the Worlds Fair Griddle. The Griswold sign is electric, circa 1930. Collection of Jim & Sally Swanson.



Sixty Gem Pans, Corn Stick Pans, Popover Pans exhibited from the collection of David and Catherine Smith. Griswold Waffle Irons are from the collection of Sue & Larry Foxx.



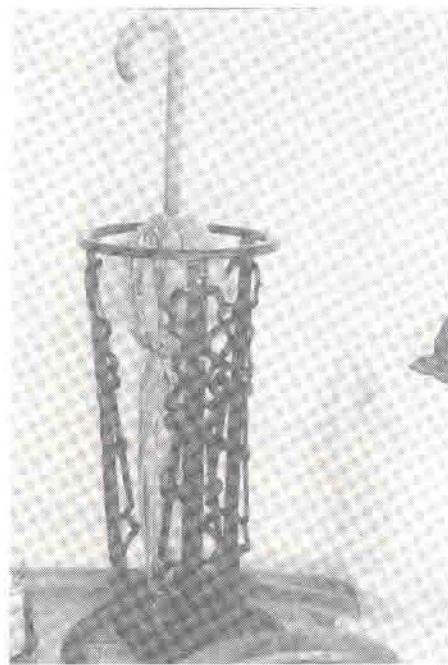
Two Griswold Number 130 Stoves, one with a grill, one with waffle irons. This size was used for lunch rooms and taverns. Goblet is a trophy awarded to Francis Griswold. Pictures are various displays done to show cooking lines. Note All-in-one skillet in bottom right corner, a rare piece. Collection of Jim & Sally Swanson



Griswold Waffle Iron Display Rack with a Seldon waffle iron at the top. The spoon clipped to the waffle iron (left) was found at a household sale at the Seldon Estate. Also displayed are: #6 round griddle, color magazine ad, enameled covered skillet, sad iron, wood handled skillet, wash ladle, Hearts Star waffle iron. Collection of Jim and Sally vanson.



A rare "Eldorado" charcoal stove circa 1900. Collection of Larry and Sue Foxx



This Umbrella Stand is not marked but that is not unusual for Erie pieces. It is however illustrated in an 1890 Griswold catalog. Collection of Jim and Sally Swanson.

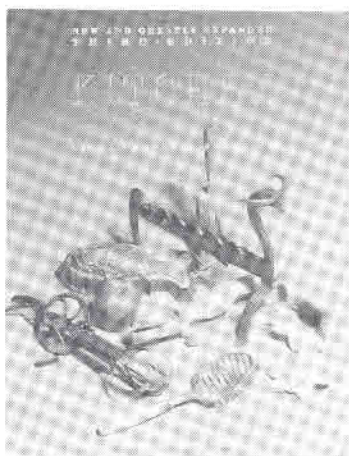


The Griswold Coffee Grinder, considered rare, seems common when compared to the other items here; Burglar Alarm, Starting Pistol, Printers Block and Zippo lighter. Collection of Larry and Sue Foxx



Display from the collections of: Jim and Sally Swanson, Larry and Sue Foxx, Joe and Joan Baldini





300 Years of Kitchen Collectibles, 3rd Edition by Linda Campbell Franklin now includes information and illustrations of cast iron cookware. A chapter about Iron Baking Pans by David G. Smith includes information and photographs of dozens of gem pans, cornstick pans, roll pans, etc. by Griswold, Wagner, G.F. Filley, etc.

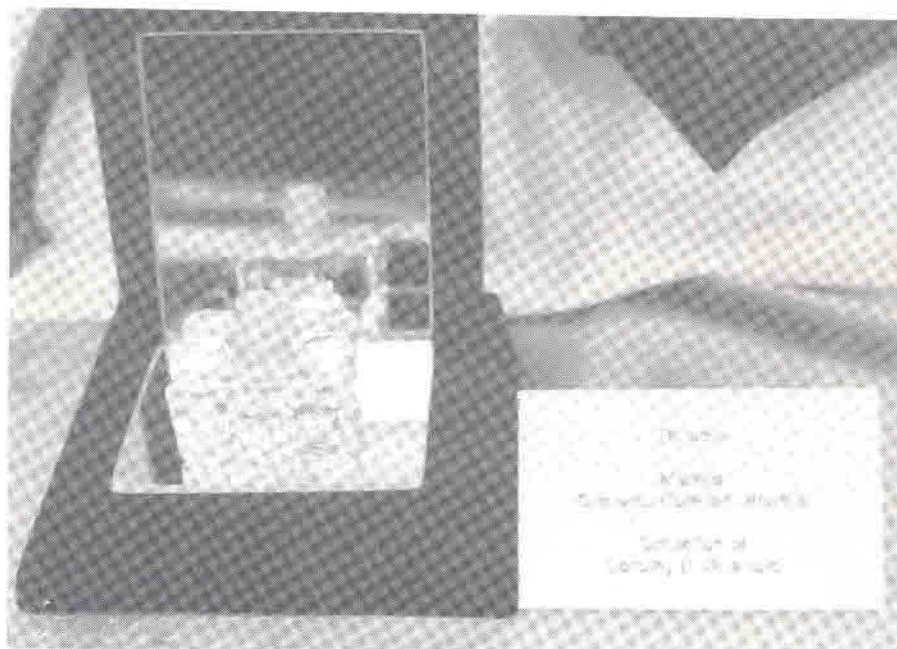
Copies are available from D.G. Smith, PO Box B, Perrysburg, NY 14129. \$25.00 incl. postage & handling.

THE EXCHANGE

Your Classified Here
\$2.00 per issue

Submit classified ads to
David G. Smith, Editor
Kettles 'n Cookware
PO Box B, Perrysburg, NY 14129

Your Classified Here
\$2.00 per issue



Not much is known about the Thimble which is marked Griswold Cooking Utensils. It is however, considered rare.

The Kettles 'n Cookware is published bimonthly on even number months.

ALL RIGHTS ARE RESERVED.

No part of this work may be reproduced without written permission from the publisher.

Subscription: \$15.00 per year.

Make checks payable to:
David G. Smith.

Mail all correspondence to:

David G. Smith, Co-editor
Kettles 'n Cookware
P.O. Box B
Perrysburg, NY 14129

REPRODUCTION ALERT

In the past few months a display ad ran in a major antique publication for a "Santa Claus Cake Mold". The ad states "...**limited** reissue of the famous 'Hello Kiddies' original; \$45 - limit 2." Something must be done to stop the production of bogus pieces which may ultimately be passed off as an original to some unsuspecting novice buyer.